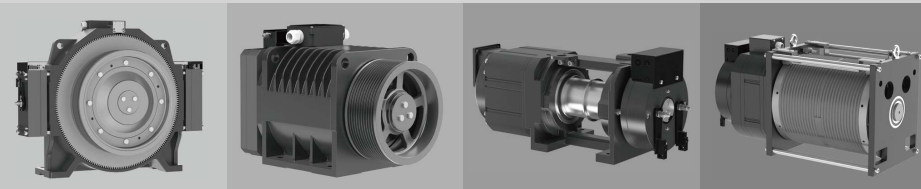


FOCUS · INNOVATION · EXCELLENT

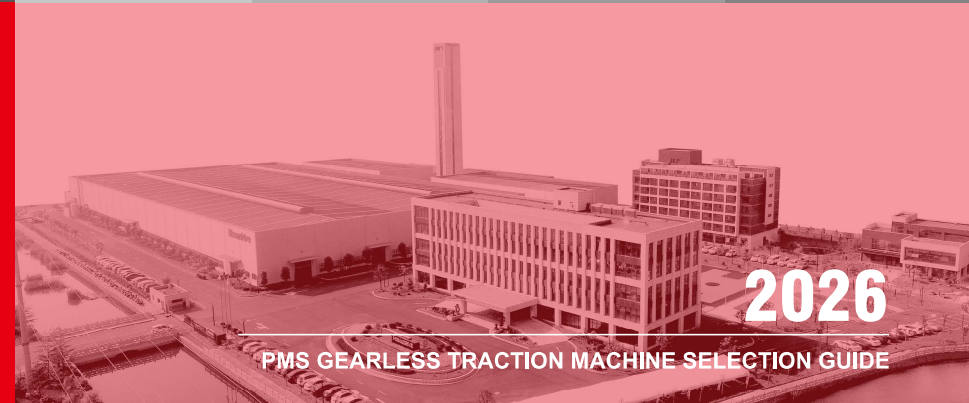
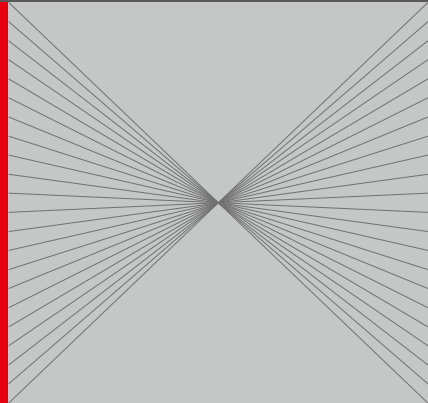
TRACTION MACHINE

# MONA DRIVE

MONA INTELLIGENCE · DRIVE THE FUTURE



LIFT TRACTION MACHINE SYSTEM SOLUTION PROVIDER



**MONADRIVE**<sup>®</sup>

SUZHOU MONA DRIVE EQUIPMENT CO.,LTD.

Address: No.66, Changfengdang Rd., Lili Town, Wujiang District, Suzhou, China.

Email: zhangap@monadrive.cn

dongshi@monadrive.cn

Tel : (+86) 512 63080025

Web : www.monadrive.cn

**MONADRIVE**<sup>®</sup>

SUZHOU MONA DRIVE EQUIPMENT CO.,LTD.

## COMPANY INTRODUCTON

Monadrive is located in Suzhou. Founded in 2004, the company has specialized in permanent magnet synchronous traction machines for over 20 years, emerging as a renowned professional manufacturer in the elevator industry.

Covering an area of 80,000 square meters, the company integrates R&D, manufacturing, sales and after-sales services. It focuses on providing customized overall solutions of elevator drive host systems for customers.

Monadrive focuses on independent R&D and continuous innovation. It operates a provincial-level technology center and has been awarded numerous honors.

In 2022, Monadrive's automated foundry was fully commissioned. Equipped with world-class casting lines, it enables automatic molding, pouring, shakeout and recycled sand reuse. This upgrade boosts smart manufacturing, delivering substantial improvements in production capacity and product quality.

In 2025, Monadrive delivered its one-millionth permanent magnet synchronous traction machine. This milestone marks the company's historic achievement, a testament to long-standing market trust and service for numerous users. It also demonstrates the strength of smart manufacturing in China and our commitment to high-quality upgrading of the elevator industry.

With professional technology, premium products, stable quality and sound services, Monadrive has gained wide recognition globally and built long-term partnerships with leading elevator enterprises worldwide. Future-oriented, Monadrive will steadily invest in R&D and innovation to strengthen core competitiveness. While consolidating its leading edge in the domestic market, we will provide high-quality and more reliable elevator drive system solutions for global customers.

**MONADRIVE®**

## CONTENTS

### MCK SERIES

MCK100	03
MCK200	05
MCK300	07
MCK450	09
MCK500	11
MCK500	13

### MONA SERIES

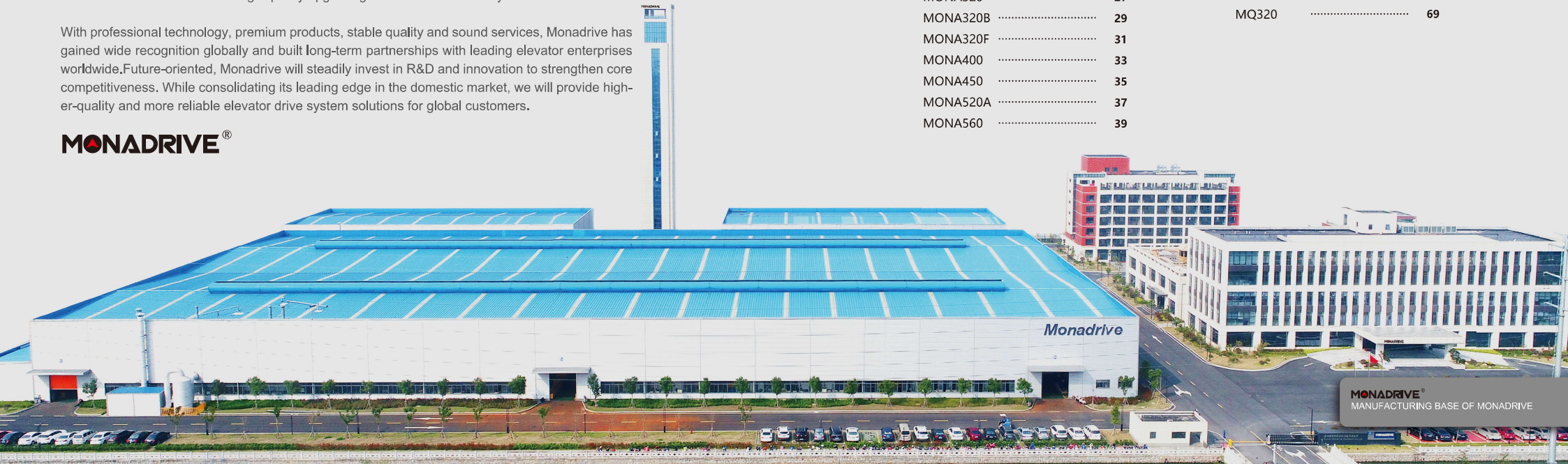
MONA150	17
MONA150A	19
MONA180	21
MONA200	23
MONA200A	25
MONA320	27
MONA320B	29
MONA320F	31
MONA400	33
MONA450	35
MONA520A	37
MONA560	39

### MGD SERIES

MGD100N2	43
MGD100N3	45
MGD100N5	47
MGD100K3	49
MGD100K4	51
MGD100K6	53
MGD120	55
COMPONENT SELECTION	57

### MQ SERIES

MQ180	61
MQ270	63
MQ230	65
MQ290	67
MQ320	69



**MONADRIVE®**  
MANUFACTURING BASE OF MONADRIVE

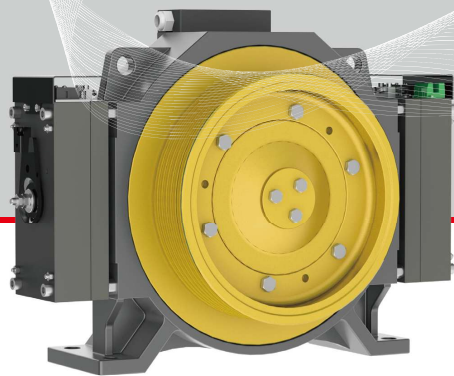
MONADRIVE®  
**MCK**

PMS GEARLESS TRACTION MACHINE

MONADRIVE®

MCK SERIES INCLUDES

- Load(320-1000)kg  
Speed(1.0-1.6)m/s MCK100 ●
- Load(630-1250)kg  
Speed(1.0-2.5)m/s MCK200 ●
- Load(1250-1600)kg  
Speed(1.0-2.5)m/s MCK300 ●
- Load(1250-1600)kg  
Speed(1.0-2.5)m/s MCK450 ●
- Load(1600-2500)kg  
Speed(1.0-2.5)m/s MCK500 ●
- Load 3000kg  
Speed(1.0-2.5)m/s MCK500 ●

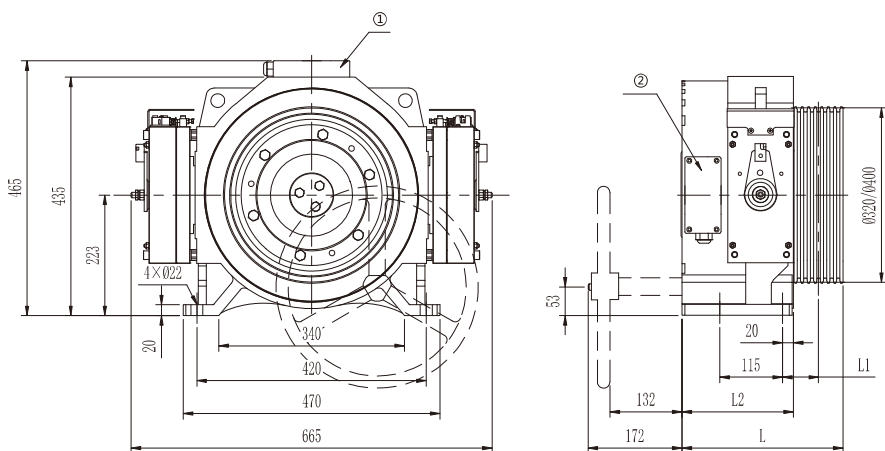


# MCK100 e

PMS GEARLESS TRACTION MACHINE

• Voltage	380V	• Traction Ratio	1:1 / 2:1
• Rated Load	(320~1000)kg	• Elv. Speed	(1.0~1.6)m/s
• Sheave Dia.	(Φ320/Φ400)mm	• Duty Cycle / Starts Per Hour	S5-40% / 240st/h
• Ingress Protection	IP41	• Insulation Class	F
• Max. Static Shaft Load	3000kg	• Weight(Max.)	220kg
⊕ Brake Type	<b>EMK7K</b>	Voltage / Current	DC110V / 2×1.3A (Standard) DC207V / 2×0.8A (Optional)

## DIMENSIONS



• Notes:

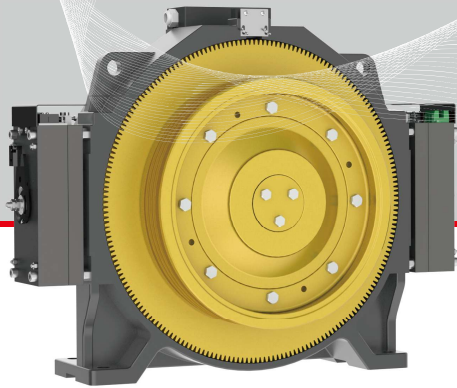
- ① Terminal box position when L2=163mm.
- ② Terminal box position when L2=204mm.

## SPEC.SHEET

Type	MCK100												
Spec.	Load	Elv. Speed	Pitch Dia.	Rope Groove	Current	Power	Speed	Freq.	Torque	Poles	L	L1	L2
	kg	m/s	mm		A	kW	r/min	Hz	N·m		mm	mm	mm
<b>Traction Ratio 1:1</b>													
450-1.0A	450	1.0	320	6×Φ8×12	10	2.9	60	12	460	24	245	61	163
450-1.6A	450	1.6		6×Φ8×12	14	4.6	95	19	460	24			
400-1.0A	400	1.0	400	5×Φ10×15	9	2.6	48	9.6	510	24	295	66	204
400-1.6A	400	1.6		5×Φ10×15	13	4.1	76	15.2	510	24			
<b>Traction Ratio 2:1</b>													
320-1.0	320	1.0	320	3×Φ8×12	5	2.2	119	23.8	180	24	225	52	163
320-1.6	320	1.6		3×Φ8×12	8	3.6	191	38.2	180	24			
450-1.0B	450	1.0	320	4×Φ8×12	7	2.7	119	23.8	220	24	225	52	163
450-1.6B	450	1.6		4×Φ8×12	11	4.4	191	38.2	220	24			
630-1.0A	630	1.0	320	5×Φ8×12	10	3.9	119	23.8	310	24	235	57	163
630-1.6A	630	1.6		5×Φ8×12	16	6.2	191	38.2	310	24			
800-1.0A	800	1.0	320	6×Φ8×12	13	5.1	119	23.8	410	24	245	61	163
800-1.6A	800	1.6		6×Φ8×12	22	8.2	191	38.2	410	24			
1000-1.0	1000	1.0	320	7×Φ8×12	16	6.4	119	23.8	510	24	295	66	204
1000-1.6	1000	1.6		7×Φ8×12	26	10.2	191	38.2	510	24			
630-1.0B	630	1.0	400	4×Φ10×15	10	4.0	95	19.0	400	24	235	57	163
630-1.6B	630	1.6		4×Φ10×15	16	6.4	153	30.6	400	24			
800-1.0B	800	1.0	400	5×Φ10×15	13	5.1	95	19.0	510	24	295	66	204
800-1.6B	800	1.6		5×Φ10×15	21	8.2	153	30.6	510	24			

• Notes:

- ∠ \*1. Traction machine is also suitable for MRL.
- ∠ \*2. Front handwheel optional.(Traction sheave: Φ320mm).
- ∠ \*3. U-groove,β=95°/γ=30° are the recommended values.Custom notch angles are available.

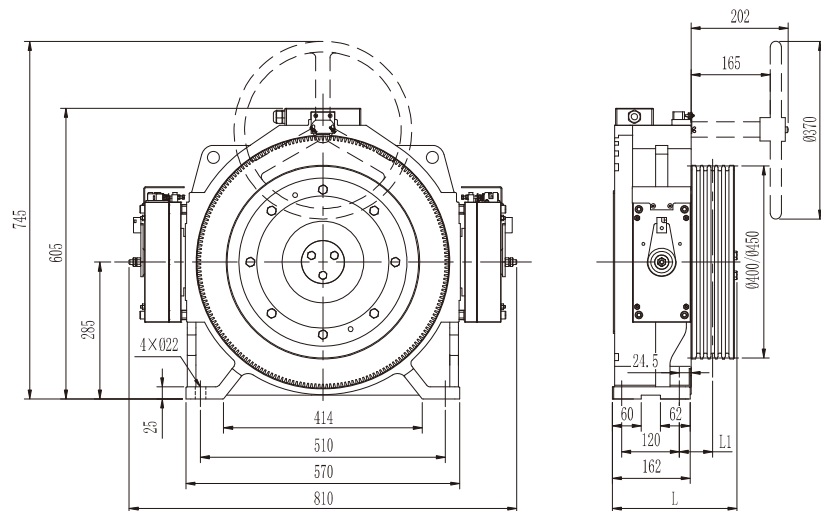


# MCK200 <sup>e</sup>

PMS GEARLESS TRACTION MACHINE

• Voltage	380V	• Traction Ratio	1:1 / 2:1
• Rated Load	(630~1250)kg	• Elv. Speed	(1.0~2.5)m/s
• Sheave Dia.	(Φ400/Φ450)mm	• Duty Cycle / Starts Per Hour	S5-40% / 240st/h
• Ingress Protection	IP41	• Insulation Class	F
• Max. Static Shaft Load	3500kg	• Weight(Max.)	290kg
⊙ Brake Type	EMK9K	Voltage / Current	DC110V / 2×1.3A (Standard) DC207V / 2×0.8A (Optional)

## DIMENSIONS



## SPEC.SHEET

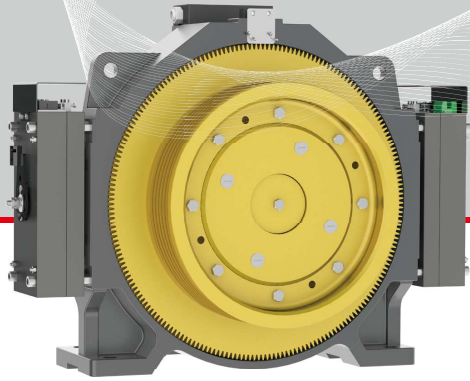
Type	MCK200											
Spec.	Load	Elv. Speed	Pitch Dia.	Rope Groove	Current	Power	Speed	Freq.	Torque	Poles	L	L1
	kg	m/s	mm		A	kW	r/min	Hz	N-m		mm	mm
<b>Traction Ratio 1:1</b>												
400-1.0	400	1.0	400	5×Φ10×15	8	2.6	48	12.8	520	32	260	69.5
400-1.6	400	1.6		5×Φ10×15	11	4.1	76	20.3	520	32		
450-1.0	450	1.0	400	5×Φ10×15	9	3.0	48	12.8	590	32	260	69.5
450-1.6	450	1.6		5×Φ10×15	12	4.7	76	20.3	590	32		
500-1.0	500	1.0	400	5×Φ10×15	10	3.3	48	12.8	650	32	260	69.5
500-1.6	500	1.6		5×Φ10×15	14	5.2	76	20.3	650	32		
550-1.0	550	1.0	400	6×Φ10×15	11	3.5	48	12.8	700	32	272	75.5
550-1.6	550	1.6		6×Φ10×15	15	5.6	76	20.3	700	32		
630-1.0	630	1.0	400	6×Φ10×15	13	4.0	48	12.8	800	32	272	75.5
630-1.6	630	1.6		6×Φ10×15	17	6.4	76	20.3	800	32		
<b>Traction Ratio 2:1</b>												
630-1.0	630	1.0	400	4×Φ10×15	10	4.2	95	25.3	420	32	260	69.5
630-1.6	630	1.6		4×Φ10×15	16	6.7	153	40.8	420	32		
630-2.0	630	2.0		4×Φ10×15	18	8.4	191	50.9	420	32		
800-1.0	800	1.0	400	5×Φ10×15	12	5.2	95	25.3	520	32	260	69.5
800-1.6	800	1.6		5×Φ10×15	20	8.3	153	40.8	520	32		
800-2.0	800	2.0		5×Φ10×15	23	10.4	191	50.9	520	32		
800-2.5	800	2.5		6×Φ10×15	28	13.0	239	63.7	520	32		
1000-1.0A	1000	1.0	400	5×Φ10×15	15	6.5	95	25.3	650	32	260	69.5
1000-1.6A	1000	1.6		5×Φ10×15	26	10.4	153	40.8	650	32		
1000-2.0A	1000	2.0		5×Φ10×15	28	13.0	191	50.9	650	32		
1000-2.5A	1000	2.5		6×Φ10×15	34	16.3	239	63.7	650	32		
1150-1.0A	1150	1.0		400	5×Φ10×15	17	7.5	95	25.3	750		
1150-1.6A	1150	1.6	6×Φ10×15		29	12.0	153	40.8	750	32		
1150-2.0A	1150	2.0	6×Φ10×15		33	15.0	191	50.9	750	32		
1250-1.0	1250	1.0	400	6×Φ10×15	20	8.0	95	25.3	800	32	272	75.5
1250-1.6	1250	1.6		6×Φ10×15	30	12.8	153	40.8	800	32		
1250-2.0	1250	2.0		6×Φ10×15	38	16.0	191	50.9	800	32		
1000-1.0B	1000	1.0	450	5×Φ10×15	15	6.5	85	22.7	730	32	260	69.5
1000-1.6B	1000	1.6		5×Φ10×15	25	10.4	136	36.3	730	32		
1000-2.0B	1000	2.0		5×Φ10×15	28	13.0	170	45.3	730	32		
1000-2.5B	1000	2.5		6×Φ10×15	36	16.2	212	56.5	730	32		
1150-1.0B	1150	1.0	450	5×Φ10×15	18	7.1	85	22.7	800	32	260	69.5
1150-1.6B	1150	1.6		6×Φ10×15	30	11.4	136	36.3	800	32		
1150-2.0B	1150	2.0		6×Φ10×15	33	14.2	170	45.3	800	32		

• Notes:

∠ \*1. Traction machine is also suitable for MRL.

∠ \*2. Rear handwheel optional.

∠ \*3. U-groove,β=95°/γ=30° are the recommended values,Custom notch angles are available.

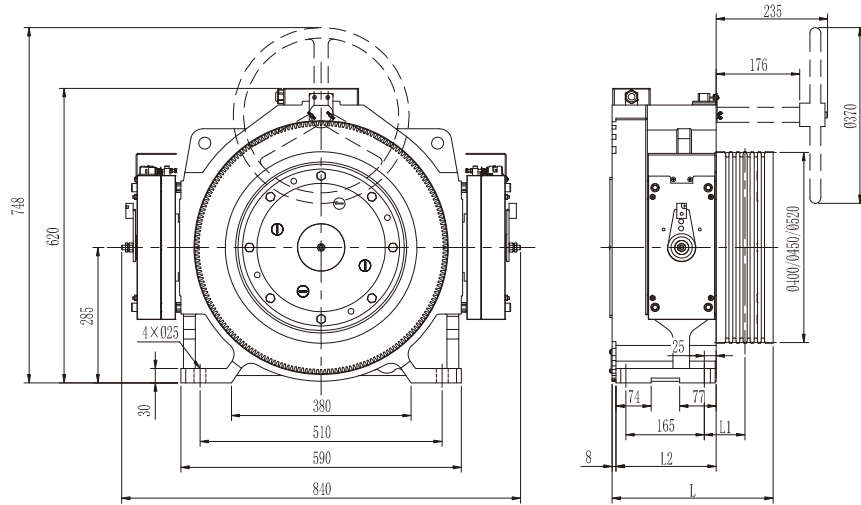


# MCK300 <sup>e</sup>

PMS GEARLESS TRACTION MACHINE

• Voltage	380V	• Traction Ratio	1:1 / 2:1
• Rated Load	(1250~1600)kg	• Elv. Speed	(1.0~2.5)m/s
• Sheave Dia.	(Φ400/Φ450/Φ520)mm	• Duty Cycle / Starts Per Hour	S5-40% / 240st/h
• Ingress Protection	IP41	• Insulation Class	F
• Max. Static Shaft Load	6000kg	• Weight(Max.)	450kg
⊙ Brake Type	EMK12K	Voltage / Current	DC110V / 2×1.6A (Standard) DC207V / 2×1.3A (Optional)

## DIMENSIONS



## SPEC.SHEET



Type	MCK300												
Spec.	Load	Elv. Speed	Pitch Dia.	Rope Groove	Current	Power	Speed	Freq.	Torque	Poles	L	L1	L2
	kg	m/s	mm		A	kW	r/min	Hz	N·m		mm	mm	mm
Traction Ratio 1:1													
630-1.0A	630	1.0	400	6×Φ10×15	13	4.0	48	12.8	800	32	345	86	211
630-1.6A	630	1.6		6×Φ10×15	17	6.4	76	20.3	800	32			
800-1.0A	800	1.0	400	7×Φ10×15	17	5.2	48	12.8	1040	32	345	86	211
800-1.6A	800	1.6		7×Φ10×15	25	9.1	84	22.4	1040	32			
630-1.0B	630	1.0	450	6×Φ10×15	14	4.0	42	11.2	900	32	345	86	211
630-1.6B	630	1.6		6×Φ10×15	19	7.0	74	19.7	900	32			
800-1.0B	800	1.0	450	7×Φ10×15	16	5.1	42	11.2	1170	32	372	91	233
800-1.6B	800	1.6		7×Φ10×15	25	8.3	68	18.1	1170	32			
800-1.0C	800	1.0	520	4×Φ13×19	18	4.9	37	9.9	1270	32	372	91	233
800-1.6C	800	1.6		4×Φ13×19	24	7.8	59	15.7	1270	32			
Traction Ratio 2:1													
1250-1.0	1250	1.0	400	6×Φ10×15	20	8.0	95	25.3	800	32	345	86	211
1250-1.6	1250	1.6		6×Φ10×15	30	12.8	153	40.8	800	32			
1250-2.0	1250	2.0		6×Φ10×15	38	16.0	191	50.9	800	32			
1350-1.0A	1350	1.0	400	7×Φ10×15	21	8.6	95	25.3	860	32	345	86	211
1350-1.6A	1350	1.6		7×Φ10×15	35	13.8	153	40.8	860	32			
1350-2.0A	1350	2.0		7×Φ10×15	40	17.2	191	50.9	860	32			
1600-1.0A	1600	1.0	400	7×Φ10×15	24	10.3	95	25.3	1040	32	345	86	211
1600-1.6A	1600	1.6		8×Φ10×15	40	16.7	153	40.8	1040	32			
1600-2.0A	1600	2.0		8×Φ10×15	45	20.8	191	50.9	1040	32			
1600-2.5A	1600	2.5		8×Φ10×15	55	26.0	239	63.7	1040	32	360	93.5	211
1350-1.0B	1350	1.0	450	7×Φ10×15	22	8.6	85	22.7	970	32			
1350-1.6B	1350	1.6		7×Φ10×15	35	13.8	136	36.3	970	32			
1350-2.0B	1350	2.0		7×Φ10×15	38	17.3	170	45.3	970	32			
1350-2.5B	1350	2.5		7×Φ10×15	49	21.5	212	56.5	970	32	345	86	211
1600-1.0B	1600	1.0	450	7×Φ10×15	24	10.4	85	22.7	1170	32			
1600-1.6B	1600	1.6		8×Φ10×15	40	16.7	136	36.3	1170	32			
1600-2.0B	1600	2.0		8×Φ10×15	45	20.8	170	45.3	1170	32			
1600-2.5B	1600	2.5		8×Φ10×15	55	26	212	56.5	1170	32	372	91	233
1000-1.0A	1000	1.0	520	4×Φ13×19	17	6.3	73	19.5	830	32			
1000-1.6A	1000	1.6		4×Φ13×19	26	10.3	118	31.5	830	32			

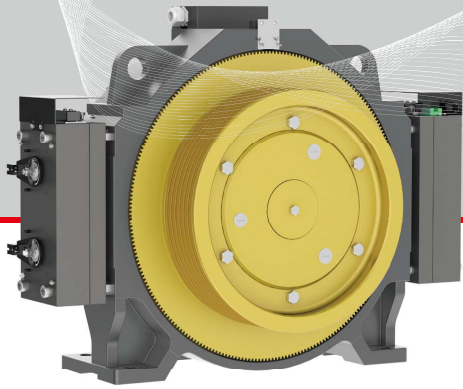
• Notes:

∠ \*1. Traction machine is also suitable for MRL.

∠ \*2. Rear handwheel optional. Traction sheave 520mm, only rear handwheel available.

∠ \*3. Rated torque > 1150Nm, brake current 2×2.6A, Voltage DC110V or brake current 2×1.65A, Voltage DC207V.

∠ \*4. U-groove, β=95°/γ=30° are the recommended values, Custom notch angles are available.

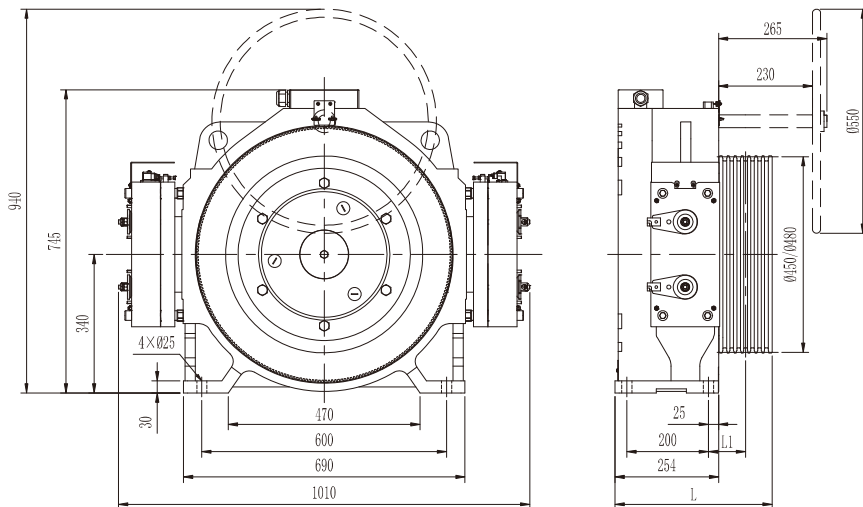


# MCK450

PMS GEARLESS TRACTION MACHINE

• Voltage	380V	• Traction Ratio	1:1 / 2:1
• Rated Load	(1600~2500)kg	• Elv. Speed	(1.0~2.5)m/s
• Sheave Dia.	(Φ450/Φ480)mm	• Duty Cycle / Starts Per Hour	S5-40% / 240st/h
• Ingress Protection	IP41	• Insulation Class	F
• Max. Static Shaft Load	7500kg	• Weight(Max.)	530kg
• Brake Type	EMK18K	Voltage / Current	DC110V / 2×2.6A (Standard) DC207V / 2×1.85A (Optional)

## DIMENSIONS



## SPEC.SHEET



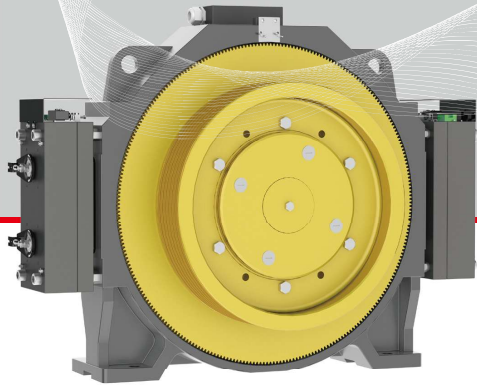
Type	MCK450													
Spec.	Load	Elv. Speed	Pitch Dia.	Rope Groove	Current	Power	Speed	Freq.	Torque	Poles	L	L1		
	kg	m/s	mm		A	kW	r/min	Hz	N-m		mm	mm		
<b>Traction Ratio 1:1</b>														
800-1.0	800	1.0	450	7×Φ10×15	17	5.1	42	14.0	1170	40	385	91		
800-1.6	800	1.6		7×Φ10×15	25	8.3	68	22.7	1170	40				
1000-1.0	1000	1.0	450	8×Φ10×15	21	6.4	42	14.0	1460	40	385	91		
1000-1.6	1000	1.6		8×Φ10×15	28	10.4	68	22.7	1460	40				
1100-1.0	1100	1.0	450	8×Φ10×15	23	7.1	42	14.0	1610	40	385	91		
1100-1.6	1100	1.6		8×Φ10×15	31	11.5	68	22.7	1610	40				
1250-1.0	1250	1.0	450	9×Φ10×15	26	8.0	42	14.0	1830	40	400	98.5		
1250-1.6	1250	1.6		9×Φ10×15	35	13.0	68	22.7	1830	40				
800-1.0	800	1.0	480	6×Φ12×17	18	5.2	40	13.3	1250	40	385	91		
800-1.6	800	1.6		6×Φ12×17	26	8.4	64	21.3	1250	40				
1000-1.0	1000	1.0	480	7×Φ12×17	23	6.5	40	13.3	1560	40	385	91		
1000-1.6	1000	1.6		7×Φ12×17	30	10.5	64	21.3	1560	40				
1100-1.0	1100	1.0	480	7×Φ12×17	25	7.2	40	13.3	1710	40	385	91		
1100-1.6	1100	1.6		7×Φ12×17	33	11.5	64	21.3	1710	40				
1250-1.0	1250	1.0	480	8×Φ12×17	28	8.2	40	13.3	1950	40	400	98.5		
1250-1.6	1250	1.6		8×Φ12×17	38	13.1	64	21.3	1950	40				
<b>Traction Ratio 2:1</b>														
1600-1.0A	1600	1.0	450	7×Φ10×15	25	10.4	85	28.3	1170	40	385	91		
1600-1.6A	1600	1.6		8×Φ10×15	42	16.7	136	45.3	1170	40				
1600-2.0A	1600	2.0		8×Φ10×15	47	20.8	170	56.7	1170	40				
1600-2.5A	1600	2.5	450	8×Φ10×15	57	26.0	212	70.7	1170	40	385	91		
2000-1.0A	2000	1.0		8×Φ10×15	30	13.0	85	28.3	1460	40				
2000-1.6A	2000	1.6		9×Φ10×15	51	20.8	136	45.3	1460	40				
2000-2.0A	2000	2.0	450	9×Φ10×15	59	26.0	170	56.7	1460	40	400	98.5		
2000-2.5A	2000	2.5		9×Φ10×15	71	32.4	212	70.7	1460	40				
2500-1.0A	2500	1.0		450	9×Φ10×15	38	16.3	85	28.3	1830			40	400
2500-1.6A	2500	1.6	9×Φ10×15		66	26.1	136	45.3	1830	40				
2500-2.0A	2500	2.0	9×Φ10×15		71	32.6	170	56.7	1830	40				
2500-2.5A	2500	2.5	480	9×Φ10×15	83	40.6	212	70.7	1830	40	385	91		
1600-1.0B	1600	1.0		6×Φ12×17	25	10.5	80	26.7	1250	40				
1600-1.6B	1600	1.6		6×Φ12×17	42	16.6	127	42.3	1250	40				
1600-2.0B	1600	2.0	480	6×Φ12×17	47	20.8	159	53.0	1250	40	385	91		
1600-2.5B	1600	2.5		6×Φ12×17	57	26.0	199	66.3	1250	40				
2000-1.0B	2000	1.0		480	7×Φ12×17	30	13.1	80	26.7	1560			40	385
2000-1.6B	2000	1.6	7×Φ12×17		51	20.7	127	42.3	1560	40				
2000-2.0B	2000	2.0	7×Φ12×17		59	26.0	159	53.0	1560	40				
2000-2.5B	2000	2.5	480	8×Φ12×17	71	32.5	199	66.3	1560	40	400	98.5		
2500-1.0B	2500	1.0		8×Φ12×17	38	15.3	80	26.7	1950	40				
2500-1.6B	2500	1.6		8×Φ12×17	66	24.3	127	42.3	1950	40				
2500-2.0B	2500	2.0	480	8×Φ12×17	71	30.5	159	53.0	1950	40	400	98.5		
2500-2.5B	2500	2.5		9×Φ12×17	83	38.1	199	66.3	1950	40				

• Notes:

① \*1. Traction machine is also suitable for MRL.

② \*2. Rear handwheel optional.

③ \*3. U-groove, β=95°/γ=30° are the recommended values, Custom notch angles are available.

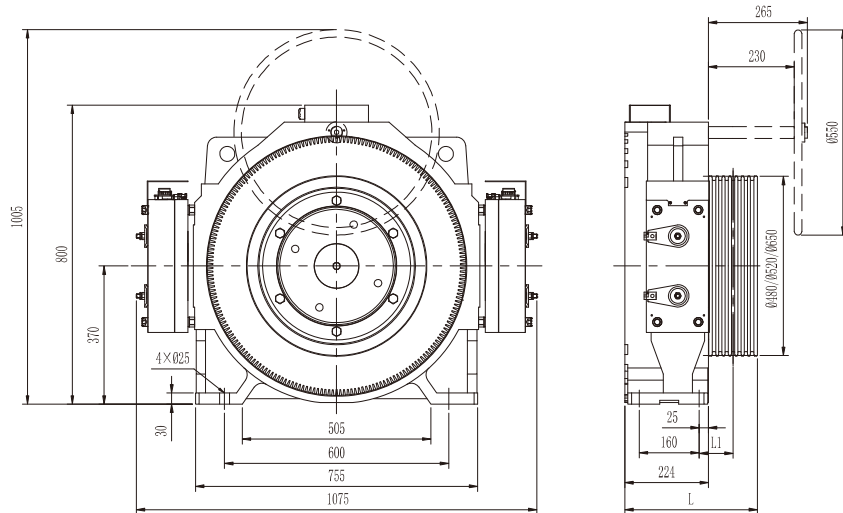


# MCK500 <sup>e</sup>

PMS GEARLESS TRACTION MACHINE

• Voltage	380V	• Traction Ratio	1:1 / 2:1
• Rated Load	(1600~2500)kg	• Elv. Speed	(1.0~2.5)m/s
• Sheave Dia.	(Φ480/Φ520/Φ650)mm	• Duty Cycle / Starts Per Hour	S5-40% / 240st/h
• Ingress Protection	IP41	• Insulation Class	F
• Max. Static Shaft Load	10000kg	• Weight(Max.)	740kg
⊙ Brake Type	EMK18K	Voltage / Current	DC110V / 2×2.6A (Standard) DC207V / 2×1.85A (Optional)

## DIMENSIONS



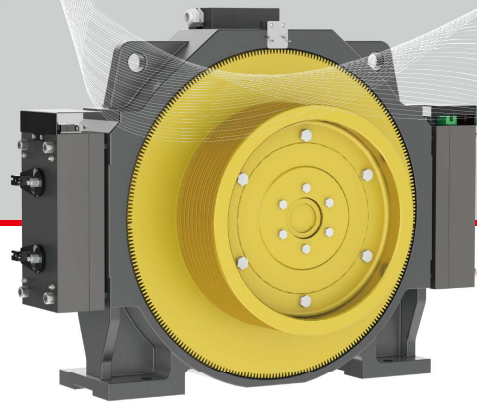
## SPEC.SHEET



Type	MCK500											
Spec.	Load	Elv. Speed	Pitch Dia.	Rope Groove	Current	Power	Speed	Freq.	Torque	Poles	L	L1
	kg	m/s	mm		A	kW	r/min	Hz	N-m		mm	mm
<b>Traction Ratio 1:1</b>												
1000-1.0A	1000	1.0	480	6×Φ12×17	23	6.5	40	13.3	1560	40	355	91
1000-1.6A	1000	1.6		6×Φ12×17	30	10.5	64	21.3	1560	40		
1000-2.0A	1000	2.0		6×Φ12×17	30	13.1	80	26.7	1560	40		
1000-1.0B	1000	1.0	520	7×Φ12×17	23	6.2	37	12.3	1590	40	355	91
1000-1.6B	1000	1.6		7×Φ12×17	32	9.8	59	19.7	1590	40		
1000-2.0B	1000	2.0		7×Φ12×17	32	12.2	73	24.3	1590	40		
1100-1.0	1100	1.0	520	7×Φ12×17	27	7.2	37	12.3	1860	40	355	91
1100-1.6	1100	1.6		7×Φ12×17	33	11.5	59	19.7	1860	40		
1100-2.0	1100	2.0		7×Φ12×17	33	14.2	73	24.3	1860	40		
1250-1.0	1250	1.0	520	8×Φ12×17	29	7.7	37	12.3	1990	40	370	98.5
1250-1.6	1250	1.6		8×Φ12×17	35	12.3	59	19.7	1990	40		
1250-2.0	1250	2.0		8×Φ12×17	35	15.2	73	24.3	1990	40		
1000-1.0C	1000	1.0	650	6×Φ13×19	20	6.0	29	9.7	1990	40	355	91
1000-1.6C	1000	1.6		6×Φ13×19	31	9.8	47	15.7	1990	40		
1000-2.0C	1000	2.0		6×Φ13×19	31	12.3	59	19.7	1990	40		
<b>Traction Ratio 2:1</b>												
1600-1.0A	1600	1.0	480	6×Φ12×17	25	10.5	80	26.7	1250	40	355	91
1600-1.6A	1600	1.6		6×Φ12×17	42	16.6	127	42.3	1250	40		
1600-2.0A	1600	2.0		6×Φ12×17	47	20.8	159	53.0	1250	40		
1600-2.5A	1600	2.5		6×Φ12×17	57	26.0	199	66.3	1250	40		
2000-1.0A	2000	1.0	480	7×Φ12×17	31	13.1	80	26.7	1560	40	355	91
2000-1.6A	2000	1.6		7×Φ12×17	51	20.7	127	42.3	1560	40		
2000-2.0A	2000	2.0		7×Φ12×17	59	26.0	159	53.0	1560	40		
2000-2.5A	2000	2.5		8×Φ12×17	71	32.5	199	66.3	1560	40	370	98.5
2500-1.0A	2500	1.0	480	8×Φ12×17	38	16.3	80	26.7	1950	40	370	98.5
2500-1.6A	2500	1.6		8×Φ12×17	66	25.9	127	42.3	1950	40		
2500-2.0A	2500	2.0		8×Φ12×17	71	32.5	159	53.0	1950	40		
2500-2.5A	2500	2.5		9×Φ12×17	83	40.6	199	66.3	1950	40	395	110
1600-1.0B	1600	1.0	520	5×Φ13×18	24	9.7	73	24.3	1270	40	355	91
1600-1.6B	1600	1.6		5×Φ13×18	40	15.7	118	39.3	1270	40		
1600-2.0B	1600	2.0		5×Φ13×18	43	19.5	147	49.0	1270	40		
1600-2.5B	1600	2.5		5×Φ13×18	55	24.5	184	61.3	1270	40		
2000-1.0B	2000	1.0	520	6×Φ13×18	32	12.2	73	24.3	1590	40	355	91
2000-1.6B	2000	1.6		6×Φ13×18	53	19.6	118	39.3	1590	40		
2000-2.0B	2000	2.0		6×Φ13×18	55	24.5	147	49.0	1590	40		
2000-2.5B	2000	2.5		6×Φ13×18	71	30.6	184	61.3	1590	40		
2500-1.0B	2500	1.0	520	7×Φ13×18	36	15.2	73	24.3	1990	40	370	98.5
2500-1.6B	2500	1.6		7×Φ13×18	63	24.6	118	39.3	1990	40		
2500-2.0B	2500	2.0		7×Φ13×18	71	30.6	147	49.0	1990	40		
2500-2.5B	2500	2.5		7×Φ13×18	83	38.3	184	61.3	1990	40		

• Notes:

- ∠ \*1, Traction machine is also suitable for MRL.
- ∠ \*2, Rear handwheel optional.
- ∠ \*3, U-groove, β=95°/γ=30° are the recommended values, Custom notch angles are available.

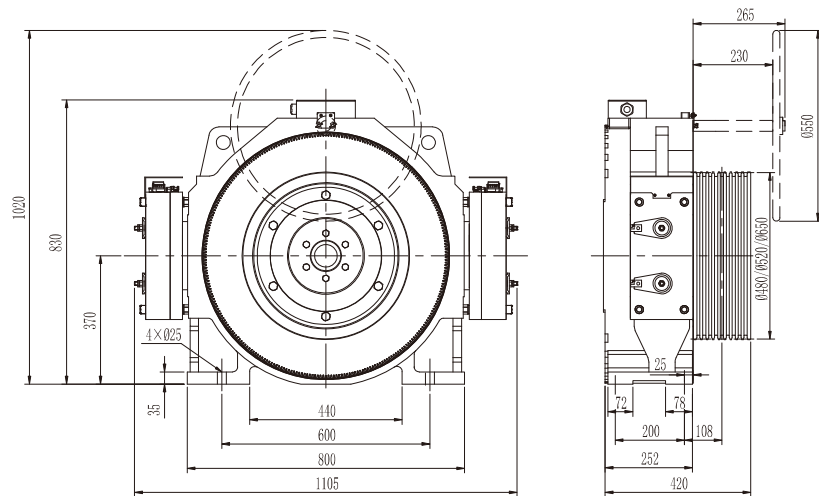


# MCK500

PMS GEARLESS TRACTION MACHINE

• Voltage	380V	• Traction Ratio	1:1 / 2:1
• Rated Load	3000kg	• Elv. Speed	(1.0~2.5)m/s
• Sheave Dia.	(Φ480/Φ520/Φ650)mm	• Duty Cycle / Starts Per Hour	S5-40% / 240st/h
• Ingress Protection	IP41	• Insulation Class	F
• Max. Static Shaft Load	1000kg	• Weight(Max.)	890kg
• Brake Type	EMK18K	Voltage / Current	DC110V / 2×3.0A (Standard) DC207V / 2×1.7A (Optional)

## DIMENSIONS



## SPEC. SHEET

Type	MCK500									
Spec.	Load	Elv. Speed	Pitch Dia.	Rope Groove	Current	Power	Speed	Freq.	Torque	Poles
	kg	m/s	mm		A	kW	r/min	Hz	N·m	
Traction Ratio 1:1										
1150-1.0	1150	1.0	650	7×Φ13×18	25	6.9	29	9.7	2280	40
1150-1.6	1150	1.6		7×Φ13×18	33	11.2	47	15.7	2280	40
1150-2.0	1150	2.0		7×Φ13×18	33	14.1	59	19.7	2280	40
1250-1.0	1250	1.0	650	7×Φ13×18	30	7.5	29	9.7	2480	40
1250-1.6	1250	1.6		7×Φ13×18	35	12.2	47	15.7	2480	40
1250-2.0	1250	2.0		7×Φ13×18	35	15.3	59	19.7	2480	40
Traction Ratio 2:1										
3000-1.0A	3000	1.0	480	8×Φ12×17	46	19.6	80	26.7	2340	40
3000-1.6A	3000	1.6		8×Φ12×17	78	31.1	127	42.3	2340	40
3000-2.0A	3000	2.0		9×Φ12×17	83	39.0	159	53.0	2340	40
3000-2.5A	3000	2.5		9×Φ12×17	108	48.8	199	66.3	2340	40
3000-1.0B	3000	1.0	520	8×Φ13×18	43	18.2	73	24.3	2380	40
3000-1.6B	3000	1.6		8×Φ13×18	75	29.4	118	39.3	2380	40
3000-2.0B	3000	2.0		8×Φ13×18	82	36.6	147	49.0	2380	40
3000-2.5B	3000	2.5		8×Φ13×18	106	45.9	184	61.3	2380	40

• Notes:

- \*1, Traction machine is also suitable for MRL.
- \*2, Rear handwheel optional.
- \*3, U-groove,  $\beta=95^\circ/\gamma=30^\circ$  are the recommended values, Custom notch angles are available.

MONADRIVE®

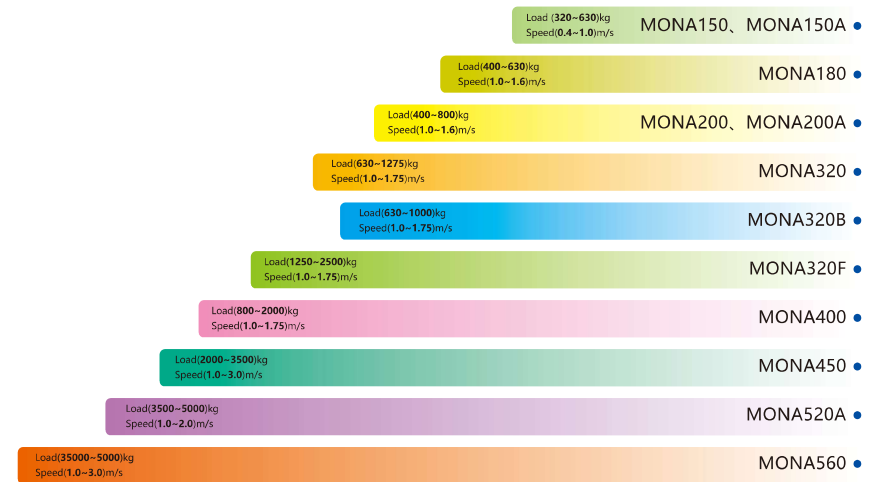
# MONA

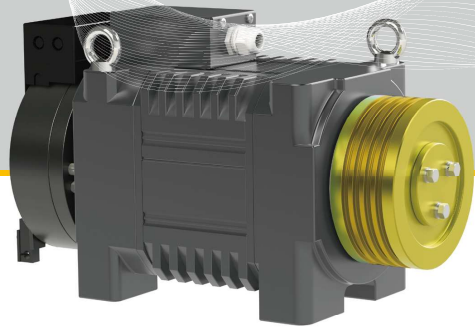
PMS GEARLESS TRACTION MACHINE



MONADRIVE®

MONA SERIES INCLUDES



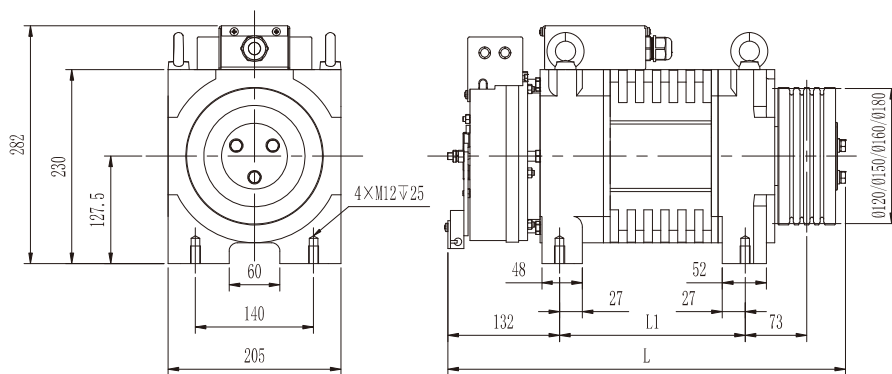


# MONA150

PMS GEARLESS TRACTION MACHINE

• Voltage	220V / 380V	• Traction Ratio	2:1
• Rated Load	(320~630)kg	• Elv. Speed	(0.4~1.0)m/s
• Sheave Dia.	(Φ120/Φ150/Φ160)mm	• Duty Cycle / Starts Per Hour	S5-25% / 180st/h
• Ingress Protection	IP41	• Insulation Class	F
• Max. Static Shaft Load	2500kg	• Weight(Max.)	85kg
⊙ Brake Type	EMM600	Voltage / Current	DC110V / 2×1.2A (Standard)    DC207V / 2×0.8A (Optional)

## DIMENSIONS



## SPEC.SHEET

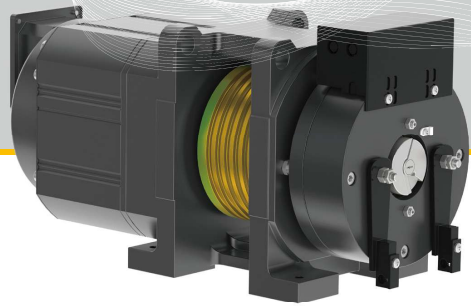
Type	MONA150											L	L1
Spec.	Load	Elv. Speed	Pitch Dia.	Rope Groove	Voltage	Current	Power	Speed	Freq.	Torque	Poles	mm	mm
	kg	m/s	mm		V	A	kW	r/min	Hz	N-m			
Traction ratio 2:1													
320-0.4A	320	0.4	120	3×Φ6.5×12	220 / 380	5	0.8	127	10.6	60	10	440	180
320-0.5A	320	0.5		3×Φ6.5×12	220 / 380	6	1.0	159	13.3	60	10		
320-0.63A	320	0.63		3×Φ6.5×12	220 / 380	6	1.3	201	16.8	60	10		
320-1.0A	320	1.0	120	3×Φ6.5×12	220 / 380	9 / 6	2.0	318	26.5	60	10	440	180
400-0.4A	400	0.4		3×Φ6.5×12	220 / 380	6	1.1	127	10.6	80	10		
400-0.5A	400	0.5		3×Φ6.5×12	220 / 380	7	1.3	159	13.3	80	10		
400-0.63A	400	0.63	120	3×Φ6.5×12	220 / 380	7	1.7	201	16.8	80	10	440	180
400-1.0A	400	1.0		3×Φ6.5×12	220 / 380	11 / 7	2.7	318	26.5	80	10		
450-0.4A	450	0.4		3×Φ6.5×12	220 / 380	7	1.2	127	10.6	90	10		
450-0.5A	450	0.5	120	3×Φ6.5×12	220 / 380	8	1.5	159	13.3	90	10	440	180
450-0.63A	450	0.63		3×Φ6.5×12	220 / 380	8	1.9	201	16.8	90	10		
450-1.0A	450	1.0		3×Φ6.5×12	220 / 380	12 / 8	3.0	318	26.5	90	10		
630-0.4A	630	0.4	120	4×Φ6.5×12	220 / 380	9	1.6	127	10.6	120	10	480	220
630-0.5A	630	0.5		4×Φ6.5×12	220 / 380	12 / 9	2.0	159	13.3	120	10		
630-0.63A	630	0.63		4×Φ6.5×12	220 / 380	12 / 9	2.5	201	16.8	120	10		
630-1.0A	630	1.0	150	4×Φ6.5×12	220 / 380	18 / 12	4.0	318	26.5	120	10	440	180
320-0.4B	320	0.4		4×Φ6.5×12	220 / 380	5	0.9	102	8.5	80	10		
320-0.5B	320	0.5		4×Φ6.5×12	220 / 380	6	1.1	127	10.6	80	10		
320-0.63B	320	0.63	150	4×Φ6.5×12	220 / 380	6	1.3	160	13.3	80	10	440	180
320-1.0B	320	1.0		4×Φ6.5×12	220 / 380	9 / 6	2.1	255	21.3	80	10		
400-0.4B	400	0.4		5×Φ6.5×12	220 / 380	6	1.1	102	8.5	100	10		
400-0.5B	400	0.5	150	5×Φ6.5×12	220 / 380	7	1.3	127	10.6	100	10	440	180
400-0.63B	400	0.63		5×Φ6.5×12	220 / 380	8	1.7	160	13.3	100	10		
400-1.0B	400	1.0		5×Φ6.5×12	220 / 380	11 / 8	2.7	255	21.3	100	10		
450-0.4B	450	0.4	150	5×Φ6.5×12	220 / 380	7	1.2	102	8.5	110	10	460	200
450-0.5B	450	0.5		5×Φ6.5×12	220 / 380	12 / 7	1.5	127	10.6	110	10		
450-0.63B	450	0.63		5×Φ6.5×12	220 / 380	12 / 8	1.8	160	13.3	110	10		
450-1.0B	450	1.0	160	5×Φ6.5×12	220 / 380	12 / 8	2.9	255	21.3	110	10	440	180
320-0.4C	320	0.4		4×Φ6.5×12	220 / 380	5	0.8	95	7.9	80	10		
320-0.5C	320	0.5		4×Φ6.5×12	220 / 380	6	1.0	119	9.9	80	10		
320-0.63C	320	0.63	160	4×Φ6.5×12	220 / 380	6	1.3	150	12.5	80	10	440	180
320-1.0C	320	1.0		4×Φ6.5×12	220 / 380	9 / 6	2.0	239	19.9	80	10		
400-0.4C	400	0.4		5×Φ6.5×12	220 / 380	6	1.0	95	7.9	100	10		
400-0.5C	400	0.5	160	5×Φ6.5×12	220 / 380	7	1.2	119	9.9	100	10	440	180
400-0.63C	400	0.63		5×Φ6.5×12	220 / 380	8	1.6	150	12.5	100	10		
400-1.0C	400	1.0		5×Φ6.5×12	220 / 380	11 / 8	2.5	239	19.9	100	10		
450-0.4C	450	0.4	160	5×Φ6.5×12	220 / 380	7	1.1	95	7.9	110	10	460	200
450-0.5C	450	0.5		5×Φ6.5×12	220 / 380	12 / 7	1.4	119	9.9	110	10		
450-0.63C	450	0.63		5×Φ6.5×12	220 / 380	12 / 8	1.7	150	12.5	110	10		
450-1.0C	450	1.0	160	5×Φ6.5×12	220 / 380	12 / 8	2.8	239	19.9	110	10	460	200
450-1.0C	450	1.0		5×Φ6.5×12	220 / 380	12 / 8	2.8	239	19.9	110	10		

• Notes:

∠ \*1. For MRL only.

∠ \*2. The sheave pitch diameter is Φ120 mm, the groove type is semicircular groove.

∠ \*3. U-groove, β=90°/γ=30° are the recommended values. Custom notch angles are available.

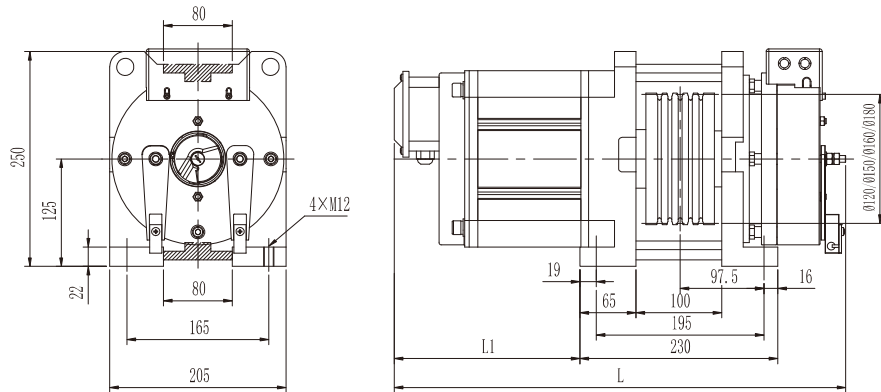


# MONA150A

PMS GEARLESS TRACTION MACHINE

• Voltage	220V / 380V	• Traction Ratio	2:1
• Rated Load	(320~630)kg	• Elv. Speed	(0.4~1.0)m/s
• Sheave Dia.	(Φ120/Φ150/Φ160)mm	• Duty Cycle / Starts Per Hour	S5-25% / 180st/h
• Ingress Protection	IP41	• Insulation Class	F
• Max. Static Shaft Load	2500kg	• Weight(Max.)	85kg
• Brake Type	EMM600	Voltage / Current	DC110V / 2×1.2A (Standard) DC207V / 2×0.8A (Optional)

## DIMENSIONS



## SPEC.SHEET



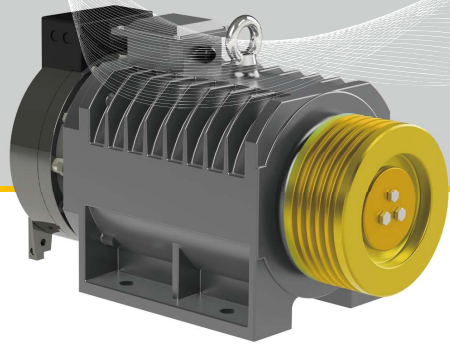
Type	MONA150A											L	L1
Spec.	Load	Elv. Speed	Pitch Dia.	Rope Groove	Voltage	Current	Power	Speed	Freq.	Torque	Poles	mm	mm
	kg	m/s	mm		V	A	kW	r/min	Hz	N·m			
Traction ratio 2:1													
320-0.4A	320	0.4	120	3×Φ6.5×12	220 / 380	5	0.8	127	10.6	60	10	485	175
320-0.5A	320	0.5		3×Φ6.5×12	220 / 380	6	1.0	159	13.3	60	10		
320-0.63A	320	0.63		3×Φ6.5×12	220 / 380	6	1.3	201	16.8	60	10		
320-1.0A	320	1.0	120	3×Φ6.5×12	220 / 380	9 / 6	2.0	318	26.5	60	10	485	175
400-0.4A	400	0.4		3×Φ6.5×12	220 / 380	6	1.1	127	10.6	80	10		
400-0.5A	400	0.5		3×Φ6.5×12	220 / 380	7	1.3	159	13.3	80	10		
400-0.63A	400	0.63	120	3×Φ6.5×12	220 / 380	7	1.7	201	16.8	80	10	485	175
400-1.0A	400	1.0		3×Φ6.5×12	220 / 380	11 / 7	2.7	318	26.5	80	10		
450-0.4A	450	0.4		3×Φ6.5×12	220 / 380	7	1.2	127	10.6	90	10		
450-0.5A	450	0.5	120	3×Φ6.5×12	220 / 380	8	1.5	159	13.3	90	10	485	175
450-0.63A	450	0.63		3×Φ6.5×12	220 / 380	8	1.9	201	16.8	90	10		
450-1.0A	450	1.0		3×Φ6.5×12	220 / 380	12 / 8	3.0	318	26.5	90	10		
630-0.4A	630	0.4	120	4×Φ6.5×12	220 / 380	9	1.6	127	10.6	120	10	525	215
630-0.5A	630	0.5		4×Φ6.5×12	220 / 380	12 / 9	2.0	159	13.3	120	10		
630-0.63A	630	0.63		4×Φ6.5×12	220 / 380	12 / 9	2.5	201	16.8	120	10		
630-1.0A	630	1.0	150	4×Φ6.5×12	220 / 380	18 / 12	4.0	318	26.5	120	10	485	175
320-0.4B	320	0.4		4×Φ6.5×12	220 / 380	5	0.9	102	8.5	80	10		
320-0.5B	320	0.5		4×Φ6.5×12	220 / 380	6	1.1	127	10.6	80	10		
320-0.63B	320	0.63	150	4×Φ6.5×12	220 / 380	6	1.3	160	13.3	80	10	485	175
320-1.0B	320	1.0		4×Φ6.5×12	220 / 380	9 / 6	2.1	255	21.3	80	10		
400-0.4B	400	0.4		5×Φ6.5×12	220 / 380	6	1.1	102	8.5	100	10		
400-0.5B	400	0.5	150	5×Φ6.5×12	220 / 380	7	1.3	127	10.6	100	10	485	175
400-0.63B	400	0.63		5×Φ6.5×12	220 / 380	8	1.7	160	13.3	100	10		
400-1.0B	400	1.0		5×Φ6.5×12	220 / 380	11 / 8	2.7	255	21.3	100	10		
450-0.4B	450	0.4	150	5×Φ6.5×12	220 / 380	7	1.2	102	8.5	110	10	505	195
450-0.5B	450	0.5		5×Φ6.5×12	220 / 380	12 / 7	1.5	127	10.6	110	10		
450-0.63B	450	0.63		5×Φ6.5×12	220 / 380	12 / 8	1.8	160	13.3	110	10		
450-1.0B	450	1.0	160	5×Φ6.5×12	220 / 380	12 / 8	2.9	255	21.3	110	10	485	175
320-0.4C	320	0.4		4×Φ6.5×12	220 / 380	5	0.9	95	7.9	80	10		
320-0.5C	320	0.5		4×Φ6.5×12	220 / 380	6	1.1	119	9.9	80	10		
320-0.63C	320	0.63	160	4×Φ6.5×12	220 / 380	6	1.3	150	12.5	80	10	485	175
320-1.0C	320	1.0		4×Φ6.5×12	220 / 380	9 / 6	2.1	239	19.9	80	10		
400-0.4C	400	0.4		5×Φ6.5×12	220 / 380	6	1.1	95	7.9	100	10		
400-0.5C	400	0.5	160	5×Φ6.5×12	220 / 380	7	1.3	119	9.9	100	10	485	175
400-0.63C	400	0.63		5×Φ6.5×12	220 / 380	8	1.7	150	12.5	100	10		
400-1.0C	400	1.0		5×Φ6.5×12	220 / 380	11 / 8	2.7	239	19.9	100	10		
450-0.4C	450	0.4	160	5×Φ6.5×12	220 / 380	7	1.2	95	7.9	110	10	505	195
450-0.5C	450	0.5		5×Φ6.5×12	220 / 380	12 / 7	1.5	119	9.9	110	10		
450-0.63C	450	0.63		5×Φ6.5×12	220 / 380	12 / 8	1.8	150	12.5	110	10		
450-1.0C	450	1.0	160	5×Φ6.5×12	220 / 380	12 / 8	2.9	239	19.9	110	10	505	195
				5×Φ6.5×12	220 / 380	12 / 8	2.9	239	19.9	110	10		

• Notes:

① \*1. For MRL only.

② \*2. The sheave pitch diameter is Φ120 mm, the groove type is semicircular groove.

③ \*3. U-groove, β=90°/γ=30° are the recommended values. Custom notch angles are available.

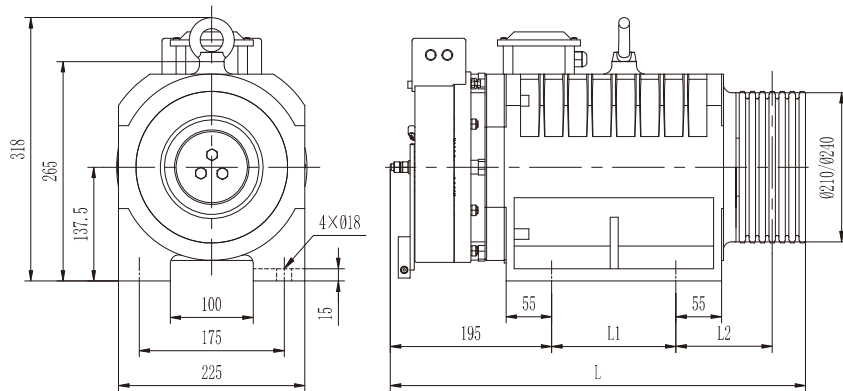


# MONA180

PMS GEARLESS TRACTION MACHINE

• Voltage	220V / 380V	• Traction Ratio	2:1
• Rated Load	(400~630)kg	• Elv. Speed	(1.0~1.6)m/s
• Sheave Dia.	( $\Phi$ 210/ $\Phi$ 240)mm	• Duty Cycle / Starts Per Hour	S5-25% / 180st/h
• Ingress Protection	IP41	• Insulation Class	F
• Max. Static Shaft Load	2500kg	• Weight(Max.)	118kg
⊙ Brake Type	<b>EMM600</b>	Voltage / Current	DC110V / 2×1.2A (Standard)    DC207V / 2×0.8A (Optional)

## DIMENSIONS



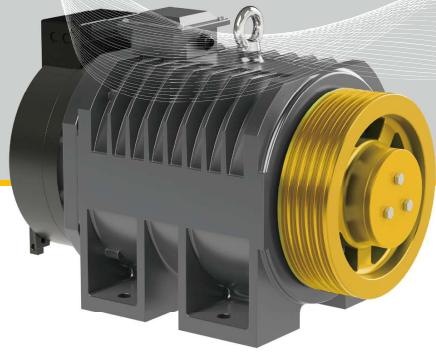
## SPEC. SHEET



Type	MONA180													
Spec.	Load	Elv. Speed	Pitch Dia.	Rope Groove	Voltage	Current	Power	Speed	Freq.	Torque	Poles	L	L1	L2
	kg	m/s	mm		V	A	kW	r/min	Hz	N·m		mm	mm	mm
Traction Ratio 2:1														
400-1.0C	400	1.0	210	5× $\Phi$ 6.5×12	220 / 380	10 / 6	2.5	182	24.3	130	16	525	150	126.5
400-1.6C	400	1.6		5× $\Phi$ 6.5×12	220 / 380	18 / 10	4.0	291	38.8	130	16			
450-1.0C	450	1.0	210	5× $\Phi$ 6.5×12	220 / 380	12 / 7	2.9	182	24.3	150	16	525	150	126.5
450-1.6C	450	1.6		5× $\Phi$ 6.5×12	220 / 380	20 / 12	4.6	291	38.8	150	16			
630-1.0C	630	1.0	210	6× $\Phi$ 6.5×12	220 / 380	15 / 10	4.0	182	24.3	210	16	595	220	126.5
630-1.6C	630	1.6		6× $\Phi$ 6.5×12	220 / 380	26 / 15	6.4	291	38.8	210	16			
400-1.0D	400	1.0	240	5× $\Phi$ 6.5×12	220 / 380	11 / 7	2.5	159	21.2	150	16	525	150	126.5
400-1.6D	400	1.6		5× $\Phi$ 6.5×12	220 / 380	20 / 11	4.0	255	34.0	150	16			
450-1.0D	450	1.0	240	5× $\Phi$ 6.5×12	220 / 380	12 / 8	2.8	159	21.2	170	16	595	220	126.5
450-1.6D	450	1.6		5× $\Phi$ 6.5×12	220 / 380	21 / 12	4.5	255	34.0	170	16			

• Notes:

- ① \*1. For MRL only.
- ② \*2. Facing the brake, junction box can be located on the left, right optionally.
- ③ \*3. U-groove,  $\beta=90^\circ/\gamma=30^\circ$  are the recommended values, Custom notch angles are available.

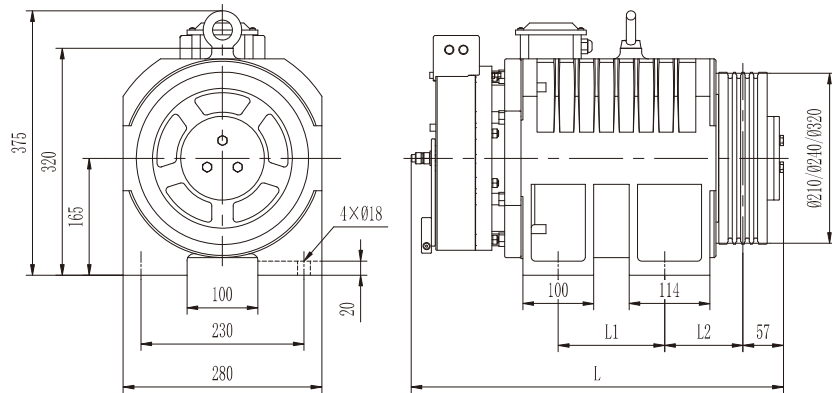


# MONA200

PMS GEARLESS TRACTION MACHINE

• Voltage	220V / 380V	• Traction Ratio	2:1
• Rated Load	(400~800)kg	• Elv. Speed	(1.0~1.6)m/s
• Sheave Dia.	(Φ210/Φ240/Φ320)mm	• Duty Cycle / Starts Per Hour	S5-25% / 180st/h
• Ingress Protection	IP41	• Insulation Class	F
• Max. Static Shaft Load	2500kg	• Weight(Max.)	180kg
☉ Brake Type	EMM600	Voltage / Current	DC110V / 2×1.2A (Standard)    DC207V / 2×0.8A (Optional)

## DIMENSIONS

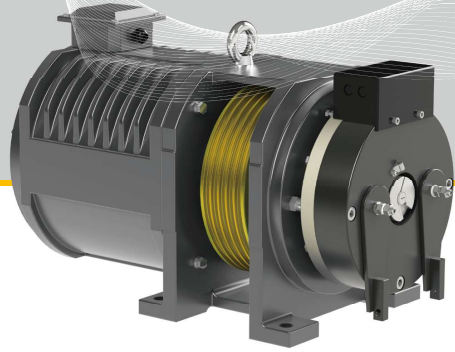


## SPEC. SHEET



Type	MONA200													
Spec.	Load	Elv. Speed	Pitch Dia.	Rope Groove	Voltage	Current	Power	Speed	Freq.	Torque	Poles	L	L1	L2
	kg	m/s	mm		V	A	kW	r/min	Hz	N-m		mm	mm	mm
Traction Ratio 2:1														
400-1.0A	400	1.0	210	5×Φ6.5×12	220 / 380	12 / 7	2.5	182	24.3	130	16	462	100	116.5
400-1.6A	400	1.6		5×Φ6.5×12	220 / 380	18 / 12	4.0	291	38.8	130	16			
450-1.0A	450	1.0	210	6×Φ6.5×12	220 / 380	12 / 8	2.9	182	24.3	150	16	462	100	116.5
450-1.6A	450	1.6		6×Φ6.5×12	220 / 380	20 / 12	4.6	291	38.8	150	16			
630-1.0A	630	1.0	210	7×Φ6.5×12	220 / 380	18 / 10	4.0	182	24.3	210	16	552	150	126.5
630-1.6A	630	1.6		7×Φ6.5×12	220 / 380	27 / 18	6.4	291	38.8	210	16			
800-1.0A	800	1.0	210	8×Φ6.5×12	220 / 380	20 / 13	5.1	182	24.3	270	16	552	150	126.5
800-1.6A	800	1.6		8×Φ6.5×12	220 / 380	34 / 20	8.2	291	38.8	270	16			
400-1.0B	400	1.0	240	5×Φ6.5×12	220 / 380	12 / 7	2.5	159	21.2	150	16	462	100	116.5
400-1.6B	400	1.6		5×Φ6.5×12	220 / 380	17 / 12	4.0	255	34.0	150	16			
450-1.0B	450	1.0	240	6×Φ6.5×12	220 / 380	13 / 8	2.8	159	21.2	170	16	462	100	116.5
450-1.6B	450	1.6		6×Φ6.5×12	220 / 380	19 / 13	4.5	255	34.0	170	16			
630-1.0B	630	1.0	240	7×Φ6.5×12	220 / 380	16 / 10	4.0	159	21.2	240	16	552	150	126.5
630-1.6B	630	1.6		7×Φ6.5×12	220 / 380	28 / 16	6.4	255	34.0	240	16			
800-1.0B	800	1.0	240	8×Φ6.5×12	220 / 380	20 / 12	5.2	159	21.2	310	16	552	150	126.5
800-1.6B	800	1.6		8×Φ6.5×12	220 / 380	32 / 20	8.3	255	34.0	310	16			
400-1.0C	400	1.0	320	4×Φ8×12	220 / 380	10 / 6	2.5	119	15.9	200	16	430	100	110.5
400-1.6C	400	1.6		4×Φ8×12	220 / 380	18 / 10	4.0	191	25.5	200	16			
450-1.0C	450	1.0	320	4×Φ8×12	220 / 380	11 / 7	2.9	119	15.9	230	16	430	100	110.5
450-1.6C	450	1.6		4×Φ8×12	220 / 380	19 / 11	4.6	191	25.5	230	16			
630-1.0C	630	1.0	320	5×Φ8×12	220 / 380	16 / 10	4.0	119	15.9	320	16	520	150	110.5
630-1.6C	630	1.6		5×Φ8×12	220 / 380	27 / 16	6.4	191	25.5	320	16			

• Notes:  
 ∠ \*1. For MRL only.  
 ∠ \*2. Facing the brake, junction box can be located on the left, right optionally.  
 ∠ \*3. U-groove, β=90°/γ=30° are the recommended values. Custom notch angles are available.

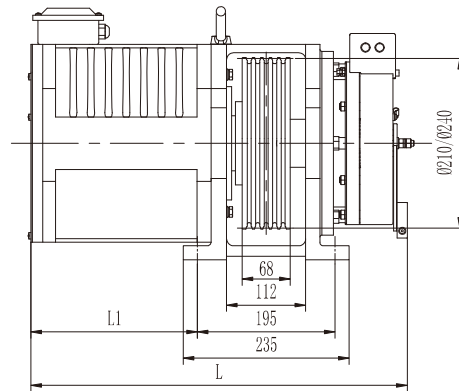
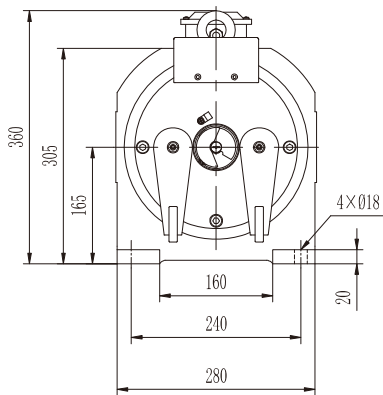


# MONA200A

PMS GEARLESS TRACTION MACHINE

• Voltage	220V / 380V	• Traction Ratio	2:1
• Rated Load	(400~800)kg	• Elv. Speed	(1.0~1.6)m/s
• Sheave Dia.	(Φ210/Φ240)mm	• Duty Cycle / Starts Per Hour	S5-25% / 180st/h
• Ingress Protection	IP41	• Insulation Class	F
• Max. Static Shaft Load	2500kg	• Weight(Max.)	135kg
⊙ Brake Type	EMM600	Voltage / Current	DC110V / 2×1.2A (Standard) DC207V / 2×0.8A (Optional)

## DIMENSIONS



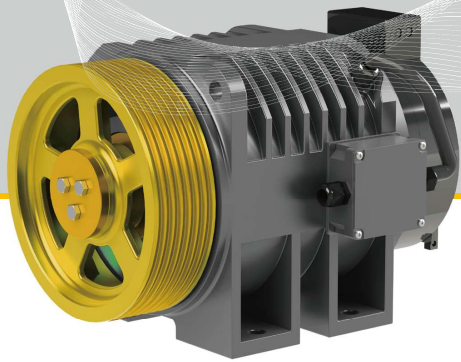
## SPEC.SHEET



Type	MONA200A													
Spec.	Load	Elv. Speed	Pitch Dia.	Rope Groove	Voltage	Current	Power	Speed	Freq.	Torque	Poles	L	L1	
	kg	m/s	mm		V	A	kW	r/min	Hz	N·m		mm	mm	
Traction Ratio 2:1														
400-1.0A	400	1.0	210	5×Φ6.5×12	220 / 380	12 / 7	2.5	182	24.3	130	16	470	150	
400-1.6A	400	1.6		5×Φ6.5×12	220 / 380	18 / 12	4.0	291	38.8	130	16			
450-1.0A	450	1.0	210	6×Φ6.5×12	220 / 380	12 / 8	2.9	182	24.3	150	16	470	150	
450-1.6A	450	1.6		6×Φ6.5×12	220 / 380	20 / 12	4.6	291	38.8	150	16			
630-1.0A	630	1.0	210	7×Φ6.5×12	220 / 380	18 / 10	4.0	182	24.3	210	16	500	180	
630-1.6A	630	1.6		7×Φ6.5×12	220 / 380	27 / 18	6.4	291	38.8	210	16			
800-1.0A	800	1.0	210	7×Φ6.5×12	220 / 380	20 / 13	5.1	182	24.3	270	16	560	240	
800-1.6A	800	1.6		7×Φ6.5×12	220 / 380	34 / 20	8.2	291	38.8	270	16			
400-1.0B	400	1.0	240	5×Φ6.5×12	220 / 380	12 / 7	2.5	159	21.2	150	16	470	150	
400-1.6B	400	1.6		5×Φ6.5×12	220 / 380	17 / 12	4.0	255	34.0	150	16			
450-1.0B	450	1.0	240	6×Φ6.5×12	220 / 380	13 / 8	2.8	159	21.2	170	16	470	150	
450-1.6B	450	1.6		6×Φ6.5×12	220 / 380	19 / 13	4.5	255	34.0	170	16			
630-1.0B	630	1.0	240	7×Φ6.5×12	220 / 380	16 / 10	4.0	159	21.2	240	16	560	240	
630-1.6B	630	1.6		7×Φ6.5×12	220 / 380	28 / 16	6.4	255	34.0	240	16			

• Notes:

- ∠ \*1. For MRL only.
- ∠ \*2. Facing the brake, junction box can be located on the left, right optionally.
- ∠ \*3. U-groove, β=90°/γ=30° are the recommended values. Custom notch angles are available.

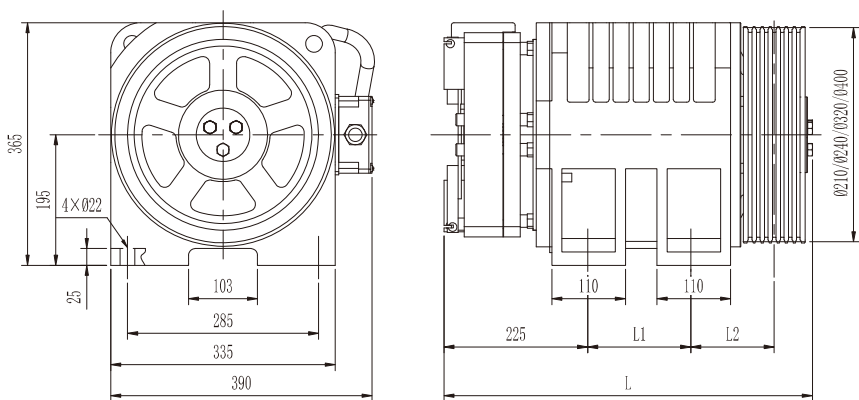


# MONA320

PMS GEARLESS TRACTION MACHINE

• Voltage	220V / 380V	• Traction Ratio	2:1
• Rated Load	(630~1275)kg	• Elv. Speed	(1.0~2.0)m/s
• Sheave Dia.	(Φ210/Φ240/Φ320/Φ400)mm	• Duty Cycle / Starts Per Hour	S5-40% / 240st/h
• Ingress Protection	IP41	• Insulation Class	F
• Max. Static Shaft Load	3500kg	• Weight(Max.)	295kg
© Brake Type	<b>EMM600</b> Voltage / Current	DC110V / 2×1.8A (Standard)	DC207V / 2×1.0A (Optional)

## DIMENSIONS



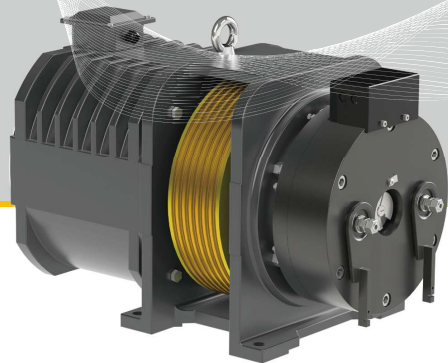
## SPEC.SHEET

Type	MONA320													
Spec.	Load	Elv. Speed	Pitch Dia.	Rope Groove	Voltage	Current	Power	Speed	Freq.	Torque	Poles	L	L1	L2
	kg	m/s	mm		V	A	kW	r/min	Hz	N·m		mm	mm	mm
<b>Traction Ratio 2:1</b>														
800-1.0A	800	1.0	210	8×Φ6.5×12	220 / 380	20 / 12	5.1	182	48.5	270	32	583	154	153.5
800-1.6A	800	1.6		8×Φ6.5×12	220 / 380	35 / 20	8.2	291	77.6	270	32			
1000-1.0A	1000	1.0	210	9×Φ6.5×12	220 / 380	25 / 15	6.3	182	48.5	330	32	607	154	165.5
1000-1.6A	1000	1.6		9×Φ6.5×12	220 / 380	43 / 25	10.1	291	77.6	330	32			
1150-1.0A	1150	1.0	210	10×Φ6.5×12	220 / 380	28 / 19	7.2	182	48.5	380	32	607	154	165.5
1150-1.6A	1150	1.6		10×Φ6.5×12	220 / 380	50 / 28	11.6	291	77.6	380	32			
800-1.0B	800	1.0	240	8×Φ6.5×12	220 / 380	21 / 13	5.2	159	42.4	310	32	558	154	127.5
800-1.6B	800	1.6		8×Φ6.5×12	220 / 380	36 / 21	8.3	255	68.0	310	32			
800-2.0B	800	2.0	240	8×Φ6.5×12	220 / 380	43 / 24	10.3	318	84.8	310	32	558	154	127.5
1000-1.0B	1000	1.0		9×Φ6.5×12	220 / 380	25 / 16	6.3	159	42.4	380	32			
1000-1.6B	1000	1.6	240	9×Φ6.5×12	220 / 380	43 / 25	10.1	255	68.0	380	32	582	154	139.5
1000-2.0B	1000	2.0		9×Φ6.5×12	220 / 380	49 / 30	12.7	318	84.8	380	32			
1150-1.0B	1150	1.0	240	10×Φ6.5×12	220 / 380	29 / 19	7.3	159	42.4	440	32	582	154	139.5
1150-1.6B	1150	1.6		10×Φ6.5×12	220 / 380	50 / 29	11.7	255	68.0	440	32			
1150-2.0B	1150	2.0	240	10×Φ6.5×12	220 / 380	59 / 35	14.7	318	84.8	440	32	582	154	139.5
1275-1.0B	1275	1.0		10×Φ6.5×12	220 / 380	32 / 20	8.2	159	42.4	490	32			
1275-1.6B	1275	1.6	240	10×Φ6.5×12	220 / 380	57 / 32	13.1	255	68.0	490	32	582	154	139.5
1275-2.0B	1275	2.0		10×Φ6.5×12	220 / 380	* / 44	16.3	318	84.8	490	32			
630-1.0C	630	1.0	320	5×Φ8×12	220 / 380	16 / 10	4.0	119	31.7	320	32	550	154	124.5
630-1.6C	630	1.6		5×Φ8×12	220 / 380	28 / 16	6.4	191	50.9	320	32			
630-2.0C	630	2.0	320	5×Φ8×12	220 / 380	35 / 23	8.0	239	63.7	320	32	550	154	124.5
800-1.0C	800	1.0		6×Φ8×12	220 / 380	20 / 13	5.1	119	31.7	410	32			
800-1.6C	800	1.6	320	6×Φ8×12	220 / 380	28 / 20	8.2	191	50.9	410	32	550	154	124.5
800-2.0C	800	2.0		6×Φ8×12	220 / 380	40 / 28	10.3	239	63.7	410	32			
1000-1.0C	1000	1.0	320	7×Φ8×12	220 / 380	25 / 16	6.4	119	31.7	510	32	550	154	124.5
1000-1.6C	1000	1.6		7×Φ8×12	220 / 380	46 / 25	10.2	191	50.9	510	32			
1000-2.0C	1000	2.0	320	7×Φ8×12	220 / 380	50 / 31	12.8	239	63.7	510	32	550	154	124.5
1150-1.0C	1150	1.0		8×Φ8×12	220 / 380	30 / 18	7.4	119	31.7	590	32			
1150-1.6C	1150	1.6	320	8×Φ8×12	220 / 380	52 / 30	11.8	191	50.9	590	32	600	194	130.5
1150-2.0C	1150	2.0		8×Φ8×12	220 / 380	58 / 33	14.8	239	63.7	590	32			
1275-1.0C	1275	1.0	320	8×Φ8×12	220 / 380	32 / 19	8.2	119	31.7	650	32	600	194	130.5
1275-1.6C	1275	1.6		8×Φ8×12	220 / 380	58 / 30	13.1	191	50.9	650	32			
1275-2.0C	1275	2.0	320	8×Φ8×12	220 / 380	* / 36	16.3	239	63.7	650	32	600	194	130.5
630-1.0B	630	1.0		400	4×Φ10×15	220 / 380	17 / 10	4.0	95	25.3	400			
630-1.6B	630	1.6	4×Φ10×15		220 / 380	29 / 17	6.4	153	40.8	400	32			
630-2.0B	630	2.0	400	4×Φ10×15	220 / 380	35 / 20	8.0	191	50.9	400	32	550	154	124.5
800-1.0B	800	1.0		5×Φ10×15	220 / 380	20 / 12	5.1	95	25.3	510	32			
800-1.6B	800	1.6	400	5×Φ10×15	220 / 380	36 / 20	7.6	153	40.8	510	32	550	154	124.5
800-2.0B	800	2.0		5×Φ10×15	220 / 380	41 / 23	10.2	191	50.9	510	32			
1000-1.0B	1000	1.0	400	5×Φ10×15	220 / 380	25 / 16	6.4	95	25.3	640	32	600	194	124.5
1000-1.6B	1000	1.6		5×Φ10×15	220 / 380	44 / 25	9.6	143	40.8	640	32			
1000-2.0B	1000	2.0	400	5×Φ10×15	220 / 380	53 / 31	12.8	191	50.9	640	32	600	194	124.5

• Notes:

∠ \*1. For MRL only.

∠ \*2. U-groove, β=90°/γ=30° are the recommended values, Custom notch angles are available.



# MONA320B

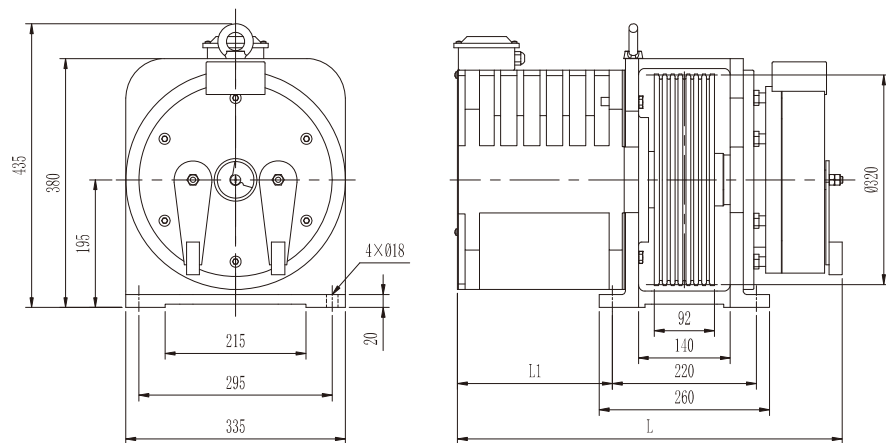
PMS GEARLESS TRACTION MACHINE

• Voltage	380V
• Rated Load	(630~1000)kg
• Sheave Dia.	Φ320mm
• Ingress Protection	IP41
• Max. Static Shaft Load	3000kg

• Traction Ratio	2:1
• Elv. Speed	(1.0~1.75)m/s
• Duty Cycle / Starts Per Hour	S5-40% / 240st/h
• Insulation Class	F
• Weight(Max.)	255kg

⊙ Brake Type	<b>EMM600</b>	Voltage / Current	DC110V / 2×1.5A (Standard)	DC207V / 2×0.9A (Optional)
--------------	---------------	-------------------	----------------------------	----------------------------

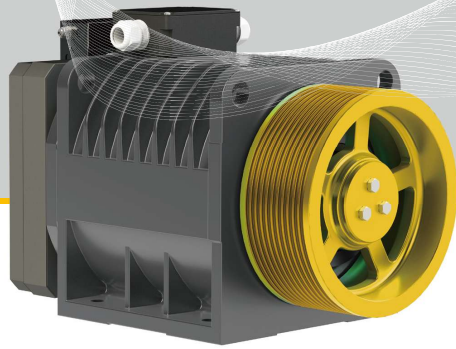
## DIMENSIONS



## SPEC. SHEET

Type	MONA320B												
Spec.	Load	Elv. Speed	Pitch Dia.	Rope Groove	Voltage	Current	Power	Speed	Freq.	Torque	Poles	L	L1
	kg	m/s	mm		V	A	kW	r/min	Hz	N·m		mm	mm
Traction Ratio 2:1													
630-1.0	630	1.0	320	5×Φ8×12	220 / 380	16 / 10	4.0	119	31.7	320	32	560	200
630-1.6	630	1.6		5×Φ8×12	220 / 380	28 / 16	6.4	191	50.9	320	32		
800-1.0	800	1.0	320	6×Φ8×12	220 / 380	20 / 13	5.1	119	31.7	410	32	600	240
800-1.6	800	1.6		6×Φ8×12	220 / 380	38 / 20	8.2	191	50.9	410	32		
1000-1.0	1000	1.0	320	7×Φ8×12	220 / 380	25 / 16	6.4	119	31.7	510	32	600	240
1000-1.6	1000	1.6		7×Φ8×12	220 / 380	46 / 25	10.2	191	50.9	510	32		

- Notes:  
 ∠ \*1. For MRL only.  
 ∠ \*2. Facing the brake, junction box can be located on the left, right optionally.  
 ∠ \*3. U-groove, β=90°/γ=30° are the recommended values, Custom notch angles are available.



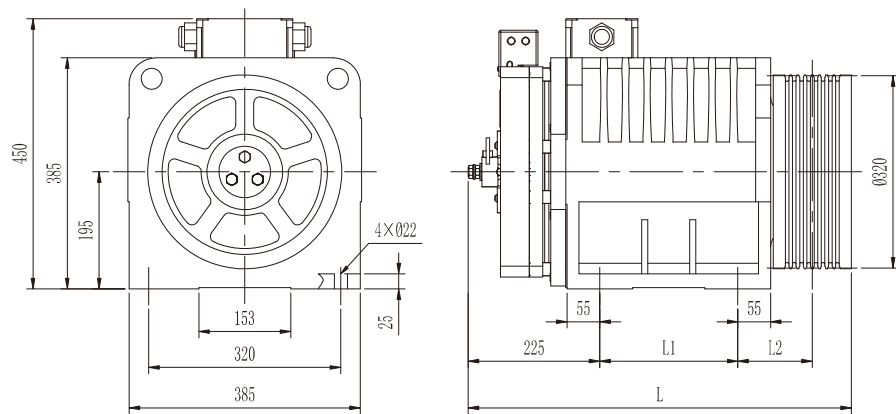
# MONA320F

PMS GEARLESS TRACTION MACHINE

• Voltage	380V	• Traction Ratio	2:1
• Rated Load	(1250~2500)kg	• Elv. Speed	(1.0~2.5)m/s
• Sheave Dia.	Φ320mm	• Duty Cycle / Starts Per Hour	S5-40% / 240st/h
• Ingress Protection	IP41	• Insulation Class	F
• Max. Static Shaft Load	10000kg	• Weight(Max.)	380kg

⊕ Brake Type	EMM1K	Voltage / Current	DC110V / 2×1.6A (Standard)	DC207V / 2×0.9A (Optional)
--------------	-------	-------------------	----------------------------	----------------------------

## DIMENSIONS



## SPEC. SHEET



Type	MONA320F												
Spec.	Load	Elv. Speed	Pitch Dia.	Rope Groove	Current	Power	Speed	Freq.	Torque	Poles	L	L1	L2
	kg	m/s	mm		A	kW	r/min	Hz	N·m		mm	mm	mm
Traction Ratio 2:1													
1250-1.0	1250	1.0	320	8×Φ8×12	18	8.0	119	15.9	640	16	638	230	124
1250-1.6	1250	1.6		8×Φ8×12	30	12.8	191	25.5	640	16			
1250-2.0	1250	2.0		8×Φ8×12	35	16.0	239	31.9	640	16			
1250-2.5	1250	2.5		8×Φ8×12	44	20.0	298	39.7	640	16			
1350-1.0	1350	1.0	320	9×Φ8×12	20	8.6	119	15.9	690	16	638	230	124
1350-1.6	1350	1.6		9×Φ8×12	34	13.8	191	25.5	690	16			
1350-2.0	1350	2.0		9×Φ8×12	38	17.3	239	31.9	690	16			
1350-2.5	1350	2.5		9×Φ8×12	47	21.5	298	39.7	690	16			
1600-1.0	1600	1.0	320	10×Φ8×12	24	10.3	119	15.9	830	16	638	230	124
1600-1.6	1600	1.6		10×Φ8×12	40	16.6	191	25.5	830	16			
1600-2.0	1600	2.0		10×Φ8×12	45	20.8	239	31.9	830	16			
1600-2.5	1600	2.5		10×Φ8×12	56	25.9	298	39.7	830	16			
2000-1.0	2000	1.0	320	12×Φ8×12	30	13.0	119	15.9	1030	16	880	410	153
2000-1.6	2000	1.6		12×Φ8×12	51	20.8	191	25.5	1030	16			
2000-2.0	2000	2.0		12×Φ8×12	55	26.0	239	31.9	1030	16			
2000-2.5	2000	2.5		12×Φ8×12	71	34.0	298	39.7	1030	16			
2500-1.0	2500	1.0	320	14×Φ8×12	41	16.8	119	15.9	1250	16	880	410	153
2500-1.6	2500	1.6		14×Φ8×12	68	26.5	191	25.5	1250	16			
2500-2.0	2500	2.0		14×Φ8×12	74	33.3	239	31.9	1250	16			
2500-2.5	2500	2.5		14×Φ8×12	88	40.7	298	39.7	1250	16			

• Notes:  
 ∠ \*1. For MRL only.  
 ∠ \*2. U-groove, β=95°/γ=30° are the recommended values, Custom notch angles are available.

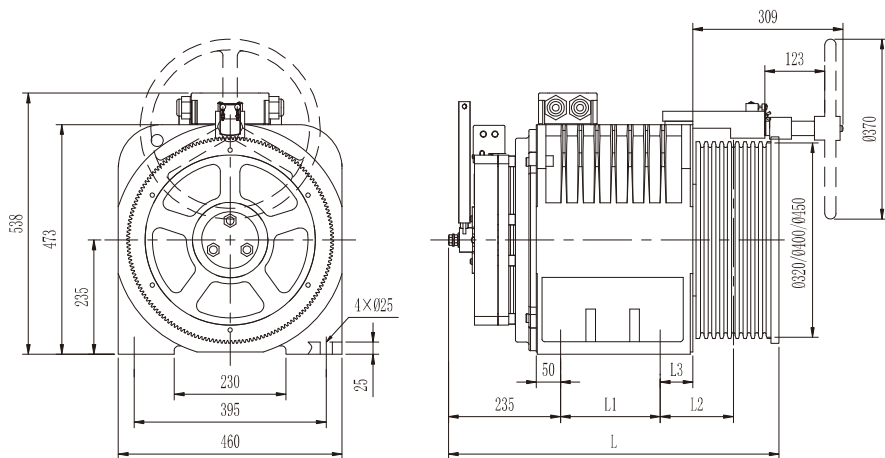


# MONA400

PMS GEARLESS TRACTION MACHINE

• Voltage	380V	• Traction Ratio	2:1
• Rated Load	(1150~2000)kg	• Elv. Speed	(1.0~2.5)m/s
• Sheave Dia.	(Φ320/Φ400/Φ450)mm	• Duty Cycle / Starts Per Hour	S5-40% / 240st/h
• Ingress Protection	IP41	• Insulation Class	F
• Max. Static Shaft Load	5500kg	• Weight(Max.)	420kg
⊙ Brake Type	EMM1K	Voltage / Current	DC110V / 2×2.0A (Standard) DC207V / 2×1.2A (Optional)

## DIMENSIONS



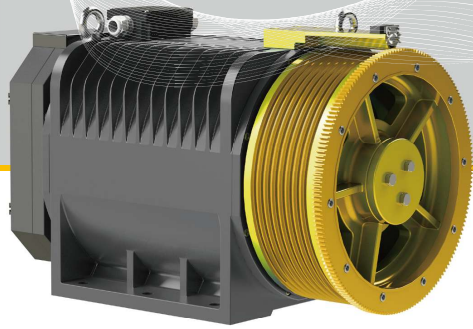
## SPEC.SHEET

Type	MONA400													
Spec.	Load	Elv. Speed	Pitch Dia.	Rope Groove	Current	Power	Speed	Freq.	Torque	Poles	L	L1	L2	L3
	kg	m/s	mm		A	kW	r/min	Hz	N-m		mm	mm	mm	mm
Traction Ratio 2:1														
1150-1.0A	1150	1.0	320	6×Φ8×12	18	7.4	119	31.7	590	32	505	130	116.5	57
1150-1.6A	1150	1.6		6×Φ8×12	28	11.8	191	50.9	590	32				
1250-1.0A	1250	1.0	320	7×Φ8×12	19	8.0	119	31.7	640	32	505	130	116.5	57
1250-1.6A	1250	1.6		7×Φ8×12	30	12.8	191	50.9	640	32				
1350-1.0A	1350	1.0	320	8×Φ8×12	20	8.6	119	31.7	690	32	505	130	116.5	57
1350-1.6A	1350	1.6		8×Φ8×12	32	13.8	191	50.9	690	32				
1600-1.0A	1600	1.0	320	9×Φ8×12	24	10.3	119	31.7	830	32	530	130	127	57
1600-1.6A	1600	1.6		9×Φ8×12	39	16.6	191	50.9	830	32				
2000-1.0	2000	1.0	320	10×Φ8×12	30	13.0	119	31.7	1040	32	540	130	127	57
2000-1.6	2000	1.6		10×Φ8×12	51	20.8	191	50.9	1040	32				
1150-1.0B	1150	1.0	400	6×Φ10×15	18	7.3	95	25.3	730	32	516	130	116.5	57
1150-1.6B	1150	1.6		6×Φ10×15	29	11.7	153	40.8	730	32				
1150-2.0B	1150	2.0		6×Φ10×15	33	14.6	191	50.9	730	32				
1150-2.5B	1150	2.5	400	6×Φ10×15	43	18.3	239	63.7	730	32	570	130	139.5	57
1250-1.0B	1250	1.0		6×Φ10×15	20	8.0	95	25.3	800	32				
1250-1.6B	1250	1.6		6×Φ10×15	30	12.8	153	40.8	800	32				
1250-2.0B	1250	2.0		6×Φ10×15	36	16.0	191	50.9	800	32				
1250-2.5B	1250	2.5		6×Φ10×15	46	20.0	239	63.7	800	32				
1350-1.0B	1350	1.0	400	7×Φ10×15	21	8.6	95	25.3	860	32	570	130	139.5	57
1350-1.6B	1350	1.6		7×Φ10×15	34	13.8	153	40.8	860	32				
1350-2.0B	1350	2.0		7×Φ10×15	39	17.2	191	50.9	860	32				
1350-2.5B	1350	2.5	400	7×Φ10×15	50	21.5	239	63.7	860	32	570	130	139.5	57
1600-1.0B	1600	1.0		7×Φ10×15	25	10.3	95	25.3	1040	32				
1600-1.6B	1600	1.6		8×Φ10×15	41	16.7	153	40.8	1040	32				
1600-2.0B	1600	2.0		8×Φ10×15	47	20.8	191	50.9	1040	32				
1600-2.5B	1600	2.5		8×Φ10×15	60	26.0	239	63.7	1040	32				
1600-1.0C	1600	1.0	450	7×Φ10×15	25	10.4	85	22.7	1170	32	680	205	150.5	67
1600-1.6C	1600	1.6		8×Φ10×15	41	16.7	136	36.3	1170	32				
1600-2.0C	1600	2.0		8×Φ10×15	48	20.8	170	45.3	1170	32				
1600-2.5C	1600	2.5		8×Φ10×15	58	26	212	56.5	1170	32				

### Notes:

∠ \*1, Traction machine is also suitable for MRL.

∠ \*2, U-groove, β=95°/γ=30° are the recommended values, Custom notch angles are available.

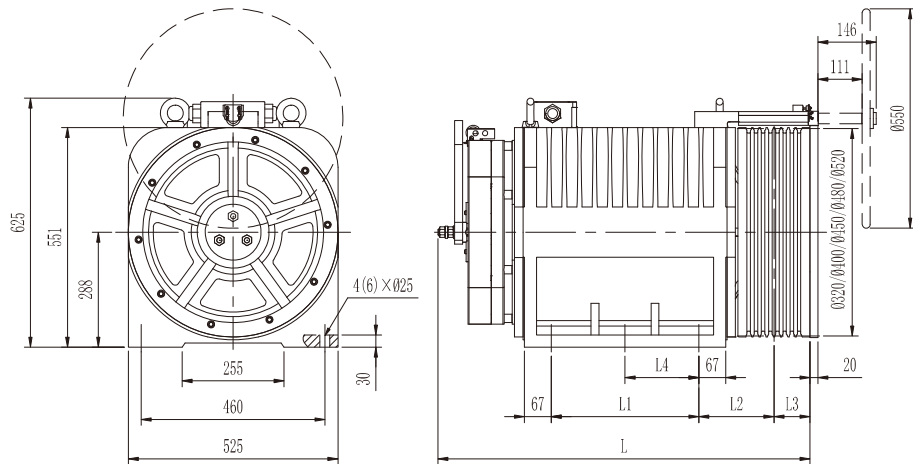


# MONA450

PMS GEARLESS TRACTION MACHINE

• Voltage	380V	• Traction Ratio	2:1
• Rated Load	(2000~3500)kg	• Elv. Speed	(1.0~3.0)m/s
• Sheave Dia.	(Φ400/Φ450/Φ480/Φ520)mm	• Duty Cycle / Starts Per Hour	S5-40% / 240st/h
• Ingress Protection	IP41	• Insulation Class	F
• Max. Static Shaft Load	12000kg	• Weight(Max.)	930kg
• Brake Type	EMM2K	Voltage / Current	DC110V / 2×2.5A (Standard) DC207V / 2×1.5A (Optional)

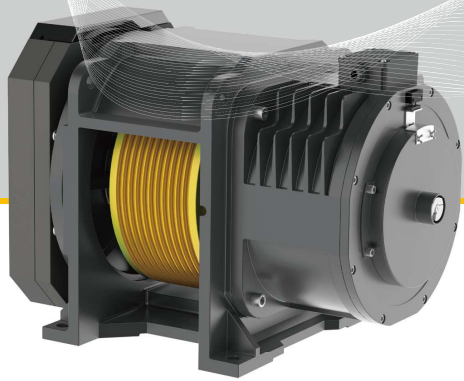
## DIMENSIONS



## SPEC.SHEET

Type	MONA450															
Spec.	Elv. Load	Elv. Speed	Pitch Dia.	Rope Groove	Current	Power	Speed	Freq.	Torque	Poles	L	L1	L2	L3	L4	
	kg	m/s	mm		A	kW	r/min	Hz	N-m		mm	mm	mm	mm	mm	
Traction Ratio 2:1																
2500-1.0	2500	1.0	320	12×Φ8×12	44	16.2	119	31.7	1300	32	665	144	202	75	/	
2500-1.6	2500	1.6		12×Φ8×12	63	26.0	191	50.9	1300	32						
2500-2.0	2500	2.0		12×Φ8×12	67	32.5	239	63.7	1300	32						
2000-1.0	2000	1.0	400	9×Φ10×15	29	12.9	95	25.3	1300	32	665	144	195	81.5	/	
2000-2.0	2000	2.0		9×Φ10×15	55	26.0	191	50.9	1300	32						
2500-1.0	2500	1.0		10×Φ10×15	37	16.1	95	25.3	1620	32						
2500-2.0	2500	2.0	400	10×Φ10×15	70	32.4	191	50.9	1620	32	740	194	195	81.5	/	
2000-1.0	2000	1.0		8×Φ10×15	31	13.0	85	22.7	1460	32						
2000-1.6	2000	1.6		9×Φ10×15	49	20.8	136	36.3	1460	32						
2000-2.0	2000	2.0	450	9×Φ10×15	56	26.0	170	45.3	1460	32	654	144	172	77	/	
2000-2.5	2000	2.5		9×Φ10×15	71	32.4	212	56.5	1460	32						
2500-1.0	2500	1.0		9×Φ10×15	37	16.3	85	22.7	1830	32						
2500-1.6	2500	1.6	450	9×Φ10×15	62	26.1	136	36.3	1830	32	700	194	172	77	/	
2500-2.0	2500	2.0		9×Φ10×15	68	32.6	170	45.3	1830	32						
2500-2.5	2500	2.5		9×Φ10×15	83	40.6	212	56.5	1830	32						
2000-1.0	2000	1.0	480	7×Φ12×17	30	13.1	80	21.3	1560	32	700	194	180	85	/	
2000-1.6	2000	1.6		7×Φ12×17	51	20.7	127	33.9	1560	32						
2000-2.0	2000	2.0		7×Φ12×17	54	26.0	159	42.4	1560	32						
2000-2.5	2000	2.5	480	8×Φ12×17	68	32.5	199	53.1	1560	32	700	194	180	85	/	
2000-3.0	2000	3.0		8×Φ12×17	81	39.0	239	63.7	1560	32						
2500-1.0	2500	1.0		8×Φ12×17	41	16.3	80	21.3	1950	32						
2500-1.6	2500	1.6	480	8×Φ12×17	66	25.9	127	33.9	1950	32	750	254	180	85	127	
2500-2.0	2500	2.0		8×Φ12×17	70	32.5	159	42.4	1950	32						
2500-2.5	2500	2.5		8×Φ12×17	89	40.6	199	53.1	1950	32						
2500-3.0	2500	3.0	480	8×Φ12×17	101	48.8	239	63.7	1950	32	750	254	180	85	127	
3000-1.0	3000	1.0		8×Φ12×17	42	19.6	80	21.3	2340	32						
3000-1.6	3000	1.6		8×Φ12×17	73	31.1	127	33.9	2340	32						
3000-2.0	3000	2.0	480	9×Φ12×17	80	39.0	159	42.4	2340	32	810	254	180	85	127	
3000-2.5	3000	2.5		9×Φ12×17	98	48.8	199	53.1	2340	32						
3000-3.0	3000	3.0		9×Φ12×17	126	58.6	239	63.7	2340	32						
2500-1.0	2500	1.0	520	7×Φ13×18	38	16.1	73	19.5	2110	32	766	254	188	90	127	
2500-1.6	2500	1.6		7×Φ13×18	61	26.1	118	31.5	2110	32						
2500-2.0	2500	2.0		7×Φ13×18	66	32.5	147	39.2	2110	32						
2500-2.5	2500	2.5	520	7×Φ13×18	88	40.7	184	49.1	2110	32	766	254	188	90	127	
2500-3.0	2500	3.0		7×Φ13×18	99	48.6	220	58.7	2110	32						
3000-1.0	3000	1.0		8×Φ13×18	45	19.3	73	19.5	2530	32						
3000-1.6	3000	1.6	520	8×Φ13×18	71	31.3	118	31.5	2530	32	884	314	188	90	157	
3000-2.0	3000	2.0		8×Φ13×18	83	38.9	147	39.2	2530	32						
3000-2.5	3000	2.5		8×Φ13×18	101	48.7	184	49.1	2530	32						
3000-2.5	3000	2.5	520	8×Φ13×18	126	58.3	220	58.7	2530	32	884	314	188	90	157	
3000-2.5	3000	2.5		8×Φ13×18	126	58.3	220	58.7	2530	32						

• Notes:  
 ∠ \*1. Traction machine is also suitable for MRL.  
 ∠ \*2. MRL: Electric brake release required.  
 ∠ \*3. L-groove, β=95°/γ=30° are the recommended values. Custom notch angles are available.

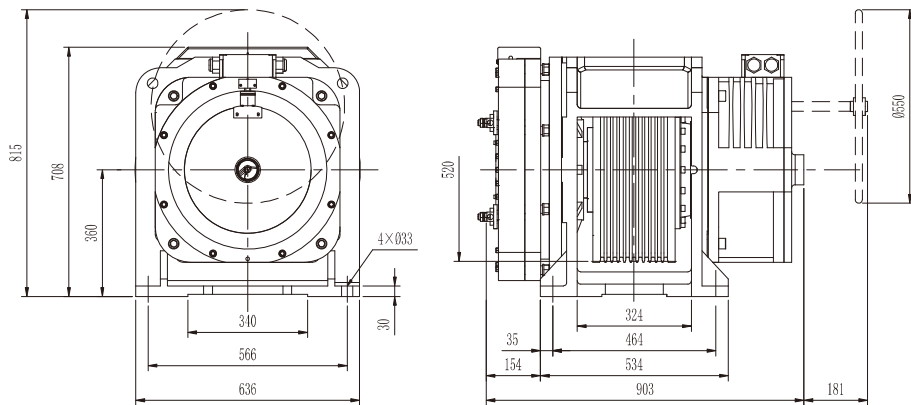


# MONA520A

PMS GEARLESS TRACTION MACHINE

• Voltage	380V	• Traction Ratio	2:1
• Rated Load	(3500~5000)kg	• Elv. Speed	(1.0~2.0)m/s
• Sheave Dia.	Φ520mm	• Duty Cycle / Starts Per Hour	S5-40% / 240st/h
• Ingress Protection	IP41	• Insulation Class	F
• Max. Static Shaft Load	16000kg	• Weight(Max.)	580kg
☉ Brake Type	EMM6K	Voltage / Current	DC110V / 2×2.6A (Standard) DC207V / 2×1.4A (Optional)

## DIMENSIONS

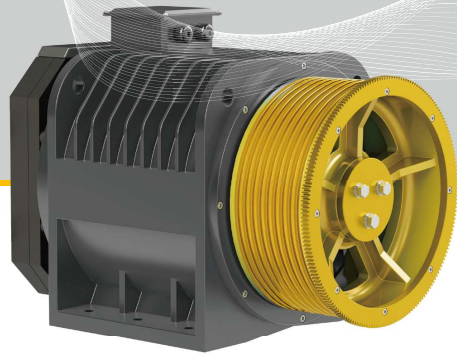


## SPEC. SHEET

Type	MONA520A									
Spec.	Load	Elv. Speed	Pitch Dia.	Rope Groove	Current	Power	Speed	Freq.	Torque	Poles
	kg	m/s	mm		A	kW	r/min	Hz	N·m	
Traction Ratio 2:1										
3500-1.0	3500	1.0	520	9×Φ13×18	50	22.9	327	54.5	2950	20
3500-1.6	3500	1.6		9×Φ13×18	84	36.7	523	87.2	2950	20
3500-2.0	3500	2.0		9×Φ13×18	97	46.1	657	87.6	2950	16
4000-1.0	4000	1.0	520	10×Φ13×18	58	26.4	327	54.5	3380	20
4000-1.6	4000	1.6		10×Φ13×18	96	42.2	523	87.2	3380	20
4000-2.0	4000	2.0		10×Φ13×18	112	53.0	657	87.6	3380	16
4500-1.0	4500	1.0	520	10×Φ13×18	65	29.4	327	54.5	3800	20
4500-1.6	4500	1.6		10×Φ13×18	107	47.1	523	87.2	3800	20
4500-2.0	4500	2.0		10×Φ13×18	125	59.2	657	87.6	3800	16
5000-1.0	5000	1.0	520	11×Φ13×18	72	32.9	327	54.5	4220	20
5000-1.6	5000	1.6		11×Φ13×18	120	52.6	523	87.2	4220	20
5000-2.0	5000	2.0		11×Φ13×18	138	64.7	657	87.6	4220	16

• Notes:

- ☞ \*1. Traction machine is also suitable for MRL.
- ☞ \*2. MRL: Electric brake release required.
- ☞ \*3. Machine room: side wall distance ≥ 500mm for brake release.
- ☞ \*4. U-groove, β=95°/γ=30° are the recommended values, Custom notch angles are available.

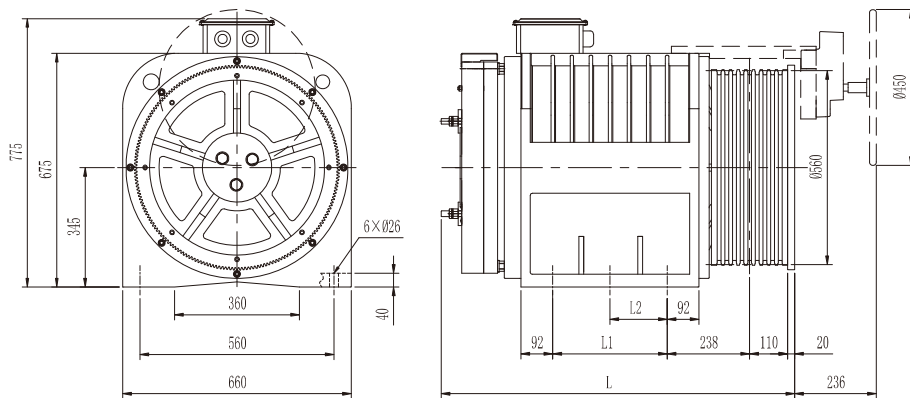


# MONA560

PMS GEARLESS TRACTION MACHINE

• Voltage	380V	• Traction Ratio	2:1
• Rated Load	(3500~5000)kg	• Elv. Speed	(1.0~3.0)m/s
• Sheave Dia.	Φ560mm	• Duty Cycle / Starts Per Hour	S5-40% / 240st/h
• Ingress Protection	IP41	• Insulation Class	F
• Max. Static Shaft Load	14000kg	• Weight(Max.)	1200kg
⊙ Brake Type	EMM6K	Voltage / Current	DC110V / 2×2.6A (Standard) DC207V / 2×1.4A (Optional)

## DIMENSIONS



## SPEC. SHEET

Type	MONA560												
Spec.	Load	Elv. Speed	Pitch Dia.	Rope Groove	Current	Power	Speed	Freq.	Torque	Poles	L	L1	L2
	kg	m/s	mm		A	kW	r/min	Hz	N-m		mm	mm	mm
Traction Ratio 2:1													
3500-1.0	3500	1.0	560	9×Φ13×18	55	22.9	68	11.3	3220	20	915	280	140
3500-1.6	3500	1.6		9×Φ13×18	93	36.8	109	18.2	3220	20			
3500-2.0	3500	2.0		9×Φ13×18	103	45.9	136	22.7	3220	20			
3500-2.5	3500	2.5		9×Φ13×18	132	57.7	171	28.5	3220	20			
3500-3.0	3500	3.0		9×Φ13×18	154	69.1	205	34.2	3220	20			
4000-1.0	4000	1.0	560	10×Φ13×18	62	26.2	68	11.3	3680	20	915	280	140
4000-1.6	4000	1.6		10×Φ13×18	106	42.0	109	18.2	3680	20			
4000-2.0	4000	2.0		10×Φ13×18	117	52.4	136	22.7	3680	20			
4000-2.5	4000	2.5		10×Φ13×18	151	65.9	171	28.5	3680	20			
4000-3.0	4000	3.0		10×Φ13×18	176	79.0	205	34.2	3680	20			
4500-1.0	4500	1.0	560	10×Φ13×18	70	29.5	68	11.3	4140	20	1020	330	165
4500-1.6	4500	1.6		10×Φ13×18	119	47.3	109	18.2	4140	20			
4500-2.0	4500	2.0		10×Φ13×18	132	59.0	136	22.7	4140	20			
4500-2.5	4500	2.5		10×Φ13×18	170	74.1	171	28.5	4140	20			
4500-3.0	4500	3.0		10×Φ13×18	198	88.9	205	34.2	4140	20			
5000-1.0	5000	1.0	560	11×Φ13×18	78	32.8	68	11.3	4600	20	1020	330	165
5000-1.6	5000	1.6		11×Φ13×18	132	52.5	109	18.2	4600	20			
5000-2.0	5000	2.0		11×Φ13×18	147	65.5	136	22.7	4600	20			
5000-2.5	5000	2.5		11×Φ13×18	189	82.4	171	28.5	4600	20			
5000-3.0	5000	3.0		11×Φ13×18	220	98.7	205	34.2	4600	20			

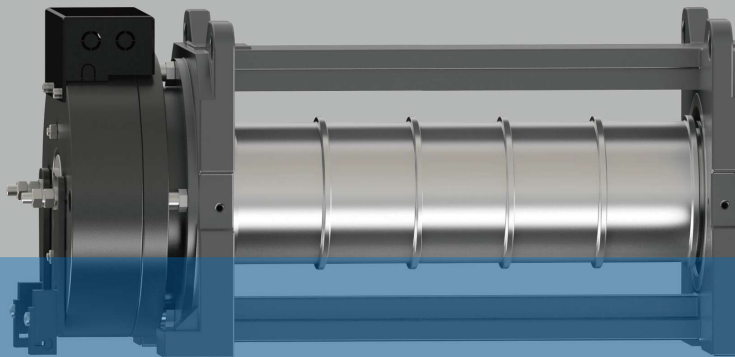
• Notes:

- ∠ \*1. Traction machine is also suitable for MRL.
- ∠ \*2. MRL: Electric brake release required.
- ∠ \*3. Machine room: side wall distance ≥ 500mm for brake release.
- ∠ \*4. U-groove, β=95°/γ=30° are the recommended values, Custom notch angles are available.

MONADRIVE®

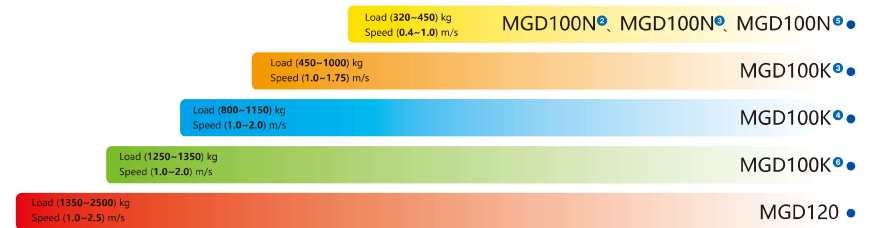
# MGD

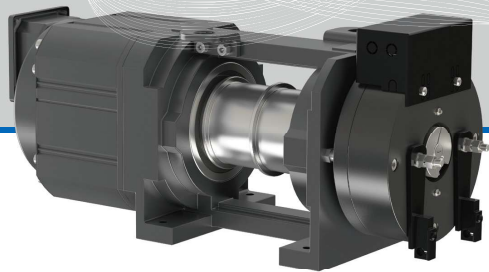
PMS GEARLESS BELT TRACTION MACHINE



MONADRIVE®

MGD SERIES INCLUDES



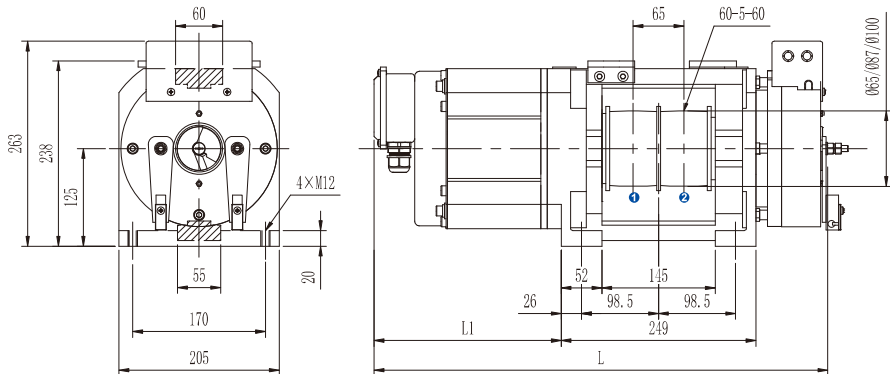


# MGD100 N2

PMS GEARLESS BELT TRACTION MACHINE

• Voltage	220V / 380V	• Traction Ratio	1:1 / 2:1
• Rated Load	(320~630)kg	• Elv. Speed	(0.3~1.0)m/s
• Belt Sheave Dia.	(Φ65/Φ87/Φ100)mm	• Duty Cycle / Starts Per Hour	S5-25% / 180st/h
• Ingress Protection	IP41	• Insulation Class	F
• Max. Static Shaft Load	2500kg	• Weight(Max.)	75kg
⊙ Brake Type	EMM600	Voltage / Current	DC110V / 2×1.2A (Standard) DC207V / 2×0.8A (Optional)

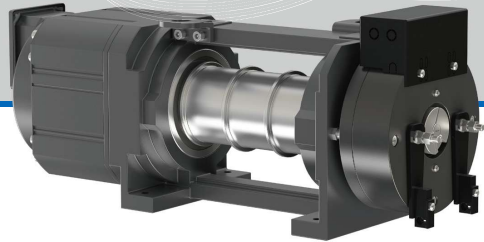
## DIMENSIONS



## SPEC.SHEET

Type	MGD100N2													
Spec.	Load kg	Elv. Speed m/s	Belt Sheave Dia. mm	Belt Groove	Voltage V	Current A	Power kW	Speed r/min	Freq. Hz	Torque N·m	Poles	L mm	L1 mm	
<b>Traction ratio 2:1</b>														
320-0.3A	320	0.3	65	2×60	220 / 380	4	0.6	176	14.7	30	10	535	170	
320-0.4A	320	0.4		2×60	220 / 380	4	0.7	235	19.6	30	10			
320-0.5A	320	0.5		2×60	220 / 380	4	0.9	294	24.5	30	10			
320-0.63A	320	0.63	65	2×60	220 / 380	7 / 4	1.2	370	30.8	30	10	535	170	
400-0.3A	400	0.3		2×60	220 / 380	5	0.7	176	14.7	40	10			
400-0.4A	400	0.4		2×60	220 / 380	5	1.0	235	19.6	40	10			
400-0.5A	400	0.5	65	2×60	220 / 380	5	1.2	294	24.5	40	10	535	170	
400-0.63A	400	0.63		2×60	220 / 380	9 / 5	1.5	370	30.8	40	10			
450-0.3A	450	0.3		2×60	220 / 380	5	0.9	176	14.7	50	10			
450-0.4A	450	0.4	65	2×60	220 / 380	5	1.2	235	19.6	50	10	535	170	
450-0.5A	450	0.5		2×60	220 / 380	6	1.5	294	24.5	50	10			
450-0.63A	450	0.63		2×60	220 / 380	10 / 6	1.9	370	30.8	50	10			
320-0.3B	320	0.3	87	2×60	220 / 380	4	0.6	132	11.0	40	10	535	170	
320-0.4B	320	0.4		2×60	220 / 380	4	0.7	176	14.7	40	10			
320-0.5B	320	0.5		2×60	220 / 380	7 / 4	0.9	220	18.3	40	10			
320-0.63B	320	0.63	87	2×60	220 / 380	7 / 4	1.2	277	23.1	40	10	535	170	
320-1.0B	320	1.0		2×60	220 / 380	10 / 7	1.8	439	36.6	40	10			
400-0.3B	400	0.3		2×60	220 / 380	5	0.8	132	11.0	55	10			
400-0.4B	400	0.4	87	2×60	220 / 380	5	1.0	176	14.7	55	10	535	170	
400-0.5B	400	0.5		2×60	220 / 380	8 / 5	1.3	220	18.3	55	10			
400-0.63B	400	0.63		2×60	220 / 380	8 / 5	1.6	277	23.1	55	10			
400-1.0B	400	1.0	87	2×60	220 / 380	12 / 8	2.5	439	36.6	55	10	535	170	
450-0.3B	450	0.3		2×60	220 / 380	6	0.8	132	11.0	60	10			
450-0.4B	450	0.4		2×60	220 / 380	6	1.1	176	14.7	60	10			
450-0.5B	450	0.5	87	2×60	220 / 380	9 / 6	1.4	220	18.3	60	10	535	170	
450-0.63B	450	0.63		2×60	220 / 380	9 / 6	1.7	277	23.1	60	10			
450-1.0B	450	1.0		2×60	220 / 380	14 / 9	2.8	439	36.6	60	10			
320-0.3C	320	0.3	100	2×60	220 / 380	4	0.6	115	9.6	50	10	545	180	
320-0.4C	320	0.4		2×60	220 / 380	4	0.8	153	12.8	50	10			
320-0.5C	320	0.5		2×60	220 / 380	7 / 4	1.0	191	15.9	50	10			
320-0.63C	320	0.63	100	2×60	220 / 380	7 / 4	1.3	241	20.1	50	10	565	200	
320-1.0C	320	1.0		2×60	220 / 380	9 / 7	2.0	382	31.8	50	10			
400-0.3C	400	0.3		2×60	220 / 380	5	0.7	115	9.6	60	10			
400-0.4C	400	0.4	100	2×60	220 / 380	5	1.0	153	12.8	60	10	545	180	
400-0.5C	400	0.5		2×60	220 / 380	8 / 5	1.2	191	15.9	60	10			
400-0.63C	400	0.63		2×60	220 / 380	8 / 5	1.5	241	20.1	60	10			
400-1.0C	400	1.0	100	2×60	220 / 380	12 / 8	2.4	382	31.8	60	10	565	200	
450-0.3C	450	0.3		2×60	220 / 380	5	0.8	115	9.6	70	10			
450-0.4C	450	0.4		2×60	220 / 380	8 / 5	1.1	153	12.8	70	10			
450-0.5C	450	0.5	100	2×60	220 / 380	8 / 5	1.4	191	15.9	70	10	565	200	
450-0.63C	450	0.63		2×60	220 / 380	8 / 5	1.8	241	20.1	70	10			
450-1.0C	450	1.0		2×60	220 / 380	12 / 8	2.8	382	31.8	70	10			
630-0.3C	630	0.3	100	2×60	220 / 380	7	1.2	115	9.6	100	10	585	220	
630-0.4C	630	0.4		2×60	220 / 380	11 / 7	1.6	153	12.8	100	10			
630-0.5C	630	0.5		2×60	220 / 380	11 / 7	2.0	191	15.9	100	10			
630-0.63C	630	0.63	100	2×60	220 / 380	11 / 7	2.5	241	20.1	100	10	585	220	
630-1.0C	630	1.0		2×60	220 / 380	16 / 11	4.0	382	31.8	100	10			
<b>Traction ratio 1:1</b>														
320-0.4D	320	0.4	100	2×60	220 / 380	6 / 4	0.8	76	6.3	100	10	605	240	
320-1.0D	320	1.0		2×60	220 / 380	9 / 6	2.0	191	15.9	100	10			
400-0.4D	400	0.4	100	2×60	220 / 380	7 / 5	1.0	76	6.3	130	10	605	240	
400-1.0D	400	1.0		2×60	220 / 380	12 / 7	2.6	191	15.9	130	10			

• Notes:  
①. For MRL only.

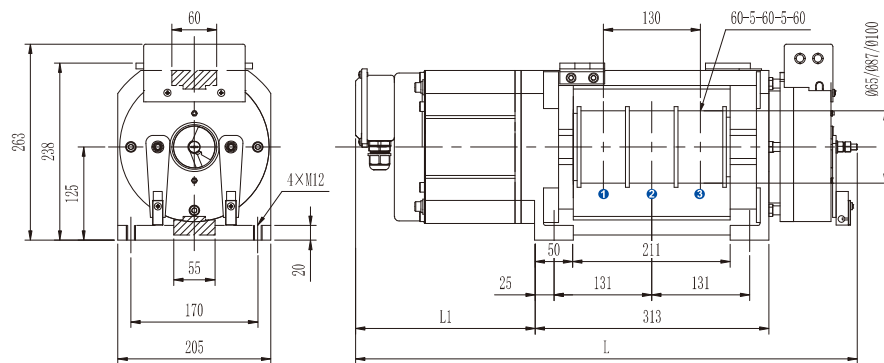


# MGD100 N3

PMS GEARLESS BELT TRACTION MACHINE

• Voltage	220V / 380V	• Traction Ratio	1:1 / 2:1
• Rated Load	(320~630)kg	• Elv. Speed	(0.3~1.0)m/s
• Belt Sheave Dia.	(Φ65/Φ87/Φ100)mm	• Duty Cycle / Starts Per Hour	S5-25% / 180st/h
• Ingress Protection	IP41	• Insulation Class	F
• Max. Static Shaft Load	2500kg	• Weight(Max.)	95kg
☉ Brake Type	EMM600	Voltage / Current	DC110V / 2×1.2A (Standard)    DC207V / 2×0.8A (Optional)

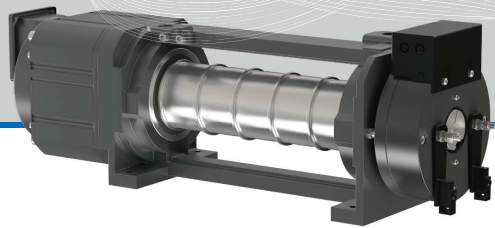
## DIMENSIONS



## SPEC. SHEET

Type	MGD100N3											L	L1
Spec.	Load	Elv. Speed	Belt Sheave Dia.	Belt Groove	Voltage	Current	Power	Speed	Freq.	Torque	Poles	L	L1
	kg	m/s	mm		V	A	kW	r/min	Hz	N·m		mm	mm
<b>Traction ratio 2:1</b>													
	(320~450)kg		65		Refer to MGD100N2							600	170
	(320~450)kg		87		Refer to MGD100N2							600	170
320-0.3C	320	0.3	100	2×60	220 / 380	4	0.6	115	9.6	50	10	610	180
320-0.4C	320	0.4		2×60	220 / 380	4	0.8	153	12.8	50	10	610	180
320-0.5C	320	0.5		2×60	220 / 380	7 / 4	1.0	191	15.9	50	10	630	200
320-0.63C	320	0.63		2×60	220 / 380	7 / 4	1.3	241	20.1	50	10	630	200
320-1.0C	320	1.0		2×60	220 / 380	9 / 7	2.0	382	31.8	50	10	630	200
400-0.3C	400	0.3	100	2×60	220 / 380	5	0.7	115	9.6	60	10	610	180
400-0.4C	400	0.4		2×60	220 / 380	5	1.0	153	12.8	60	10	610	180
400-0.5C	400	0.5		2×60	220 / 380	8 / 5	1.2	191	15.9	60	10	630	200
400-0.63C	400	0.63		2×60	220 / 380	8 / 5	1.5	241	20.1	60	10	630	200
400-1.0C	400	1.0		2×60	220 / 380	12 / 8	2.4	382	31.8	60	10	630	200
450-0.3C	450	0.3	100	2×60	220 / 380	5	0.8	115	9.6	70	10	630	200
450-0.4C	450	0.4		2×60	220 / 380	8 / 5	1.1	153	12.8	70	10	630	200
450-0.5C	450	0.5		2×60	220 / 380	8 / 5	1.4	191	15.9	70	10	630	200
450-0.63C	450	0.63		2×60	220 / 380	8 / 5	1.8	241	20.1	70	10	630	200
450-1.0C	450	1.0		2×60	220 / 380	12 / 8	2.8	382	31.8	70	10	650	220
630-0.3C	630	0.3	100	3×60	220 / 380	7	1.2	115	9.6	100	10	650	220
630-0.4C	630	0.4		3×60	220 / 380	11 / 7	1.6	153	12.8	100	10	650	220
630-0.5C	630	0.5		3×60	220 / 380	11 / 7	2.0	191	15.9	100	10	650	220
630-0.63C	630	0.63		3×60	220 / 380	11 / 7	2.5	241	20.1	100	10	650	220
630-1.0C	630	1.0		3×60	220 / 380	16 / 11	4.0	382	31.8	100	10	650	220
<b>Traction ratio 1:1</b>													
320-0.4D	320	0.4	100	3×60	220 / 380	6 / 4	0.8	76	6.3	100	10	670	240
320-1.0D	320	1.0		3×60	220 / 380	9 / 6	2.0	191	15.9	100	10	670	240
400-0.4D	400	0.4	100	3×60	220 / 380	7 / 5	1.0	76	6.3	130	10	670	240
400-1.0D	400	1.0		3×60	220 / 380	12 / 7	2.6	191	15.9	130	10	670	240

• Notes:  
 \*1. For MRL only.



# MGD100 N5

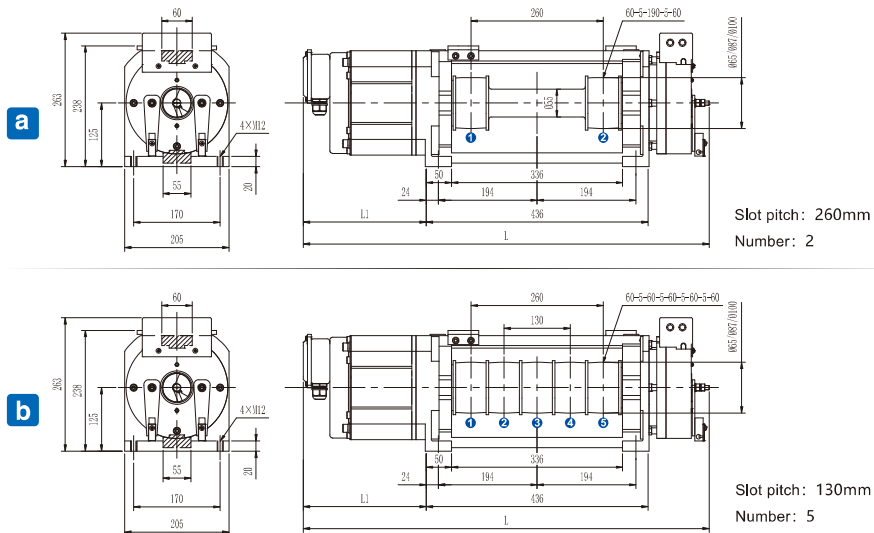
PMS GEARLESS BELT TRACTION MACHINE

• Voltage	220V / 380V	• Traction Ratio	1:1 / 2:1
• Rated Load	(320~630)kg	• Elv. Speed	(0.3~1.0)m/s
• Belt Sheave Dia.	(Φ65/Φ87/Φ100)mm	• Duty Cycle / Starts Per Hour	S5-25% / 180st/h
• Ingress Protection	IP41	• Insulation Class	F
• Max. Static Shaft Load	2500kg	• Weight(Max.)	100kg

☉ Brake Type	<b>EMM600</b>	Voltage / Current	DC110V / 2×1.2A (Standard)	DC207V / 2×0.8A (Optional)
--------------	---------------	-------------------	----------------------------	----------------------------

## DIMENSIONS

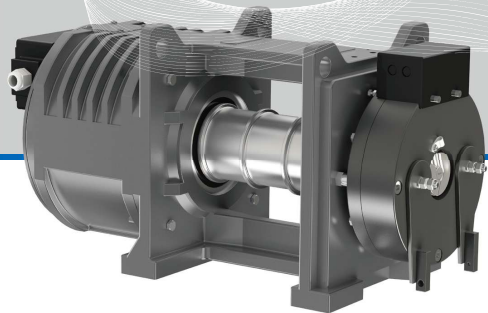


## SPEC. SHEET



Type	MGD100N5											L	L1
Spec.	Load	Elv. Speed	Belt Sheave Dia.	Belt Groove	Voltage	Current	Power	Speed	Freq.	Torque	Poles	L	L1
	kg	m/s	mm		V	A	kW	r/min	Hz	N·m		mm	mm
<b>Traction ratio 2:1</b>													
	(320~450)kg		65		Refer to MGD100N2							730	170
	(320~450)kg		87		Refer to MGD100N2							730	170
320-0.3C	320	0.3	100	2×60	220 / 380	4	0.6	115	9.6	50	10	740	180
320-0.4C	320	0.4		2×60	220 / 380	4	0.8	153	12.8	50	10		
320-0.5C	320	0.5		2×60	220 / 380	7 / 4	1.0	191	15.9	50	10		
320-0.63C	320	0.63		2×60	220 / 380	7 / 4	1.3	241	20.1	50	10	760	200
320-1.0C	320	1.0		2×60	220 / 380	9 / 7	2.0	382	31.8	50	10		
400-0.3C	400	0.3	100	2×60	220 / 380	5	0.7	115	9.6	60	10	740	180
400-0.4C	400	0.4		2×60	220 / 380	5	1.0	153	12.8	60	10		
400-0.5C	400	0.5		2×60	220 / 380	8 / 5	1.2	191	15.9	60	10		
400-0.63C	400	0.63		2×60	220 / 380	8 / 5	1.5	241	20.1	60	10	760	200
400-1.0C	400	1.0		2×60	220 / 380	12 / 8	2.4	382	31.8	60	10		
450-0.3C	450	0.3	100	2×60	220 / 380	5	0.8	115	9.6	70	10	760	200
450-0.4C	450	0.4		2×60	220 / 380	8 / 5	1.1	153	12.8	70	10		
450-0.5C	450	0.5		2×60	220 / 380	8 / 5	1.4	191	15.9	70	10		
450-0.63C	450	0.63		2×60	220 / 380	8 / 5	1.8	241	20.1	70	10		
450-1.0C	450	1.0		2×60	220 / 380	12 / 8	2.8	382	31.8	70	10	780	220
630-0.3C	630	0.3	100	3×60	220 / 380	7	1.2	115	9.6	100	10	780	220
630-0.4C	630	0.4		3×60	220 / 380	11 / 7	1.6	153	12.8	100	10		
630-0.5C	630	0.5		3×60	220 / 380	11 / 7	2.0	191	15.9	100	10		
630-0.63C	630	0.63		3×60	220 / 380	11 / 7	2.5	241	20.1	100	10		
630-1.0C	630	1.0		3×60	220 / 380	16 / 11	4.0	382	31.8	100	10		
<b>Traction ratio 1:1</b>													
320-0.4D	320	0.4	100	3×60	220 / 380	6 / 4	0.8	76	6.3	100	10	800	240
320-1.0D	320	1.0		3×60	220 / 380	9 / 6	2.0	191	15.9	100	10		
400-0.4D	400	0.4	100	3×60	220 / 380	7 / 5	1.0	76	6.3	130	10	800	240
400-1.0D	400	1.0		3×60	220 / 380	12 / 7	2.6	191	15.9	130	10		

• Notes:  
①. For MRL only.

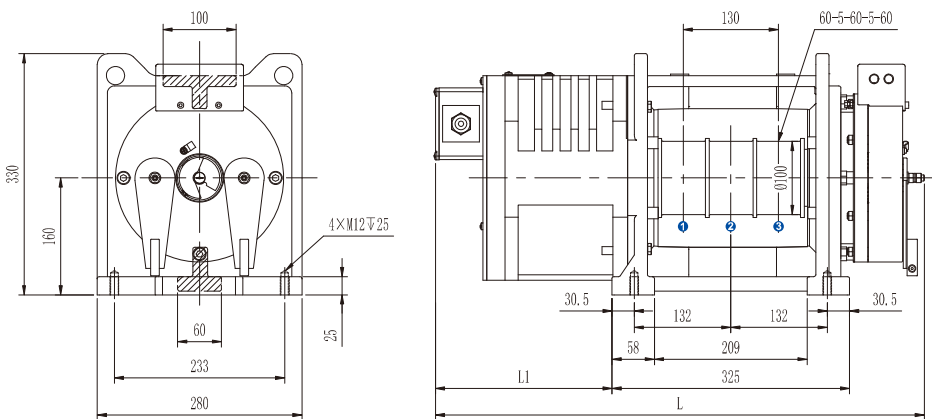


# MGD100K <sup>3</sup>

PMS GEARLESS BELT TRACTION MACHINE

• Voltage	220V / 380V	• Traction Ratio	2:1
• Rated Load	(450~1000)kg	• Elv. Speed	(1.0~1.75)m/s
• Belt Sheave Dia.	Φ100mm	• Duty Cycle / Starts Per Hour	S5-40% / 240st/h
• Ingress Protection	IP41	• Insulation Class	F
• Max. Static Shaft Load	3000kg	• Weight(Max.)	140kg
© Brake Type	<b>EMM600</b>	Voltage / Current	DC110V / 2×1.2A (Standard)    DC207V / 2×0.8A (Optional)

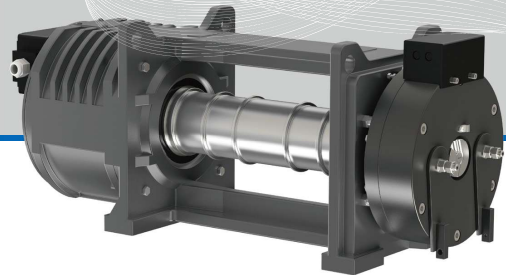
## DIMENSIONS



## SPEC. SHEET

Type	MGD100K													
Spec.	Load	Elv. Speed	Belt Sheave Dia.	Belt Groove	Voltage	Current	Power	Speed	Freq.	Torque	Poles	L	L1	
	kg	m/s	mm		V	A	kW	r/min	Hz	N·m		mm	mm	
Traction Ratio 2:1														
450-1.0	450	1.0	100	3×60	220 / 380	12 / 7	3.2	382	50.9	80	16	640	210	
450-1.5	450	1.5		3×60	220 / 380	20 / 12	4.8	573	76.4	80	16			
450-1.75	450	1.75		3×60	220 / 380	20 / 12	5.6	668	89.1	80	16			
630-1.0	630	1.0	100	3×60	220 / 380	17 / 10	4.4	382	50.9	110	16	640	210	
630-1.5	630	1.5		3×60	220 / 380	28 / 17	6.6	573	76.4	110	16			
630-1.75	630	1.75		3×60	220 / 380	28 / 17	7.7	668	89.1	110	16			
800-1.0	800	1.0	100	3×60	220 / 380	20 / 12	5.2	382	50.9	130	16	670	240	
800-1.5	800	1.5		3×60	220 / 380	33 / 20	7.8	573	76.4	130	16			
800-1.75	800	1.75		3×60	220 / 380	33 / 20	9.1	668	89.1	130	16			
1000-1.0	1000	1.0	100	3×60	220 / 380	26 / 16	6.4	382	50.9	160	16	670	240	
1000-1.5	1000	1.5		3×60	220 / 380	41 / 26	9.6	573	76.4	160	16			
1000-1.75	1000	1.75		3×60	220 / 380	41 / 26	11.2	668	89.1	160	16			

• Notes:  
 ∠ \*1, For MRL only.

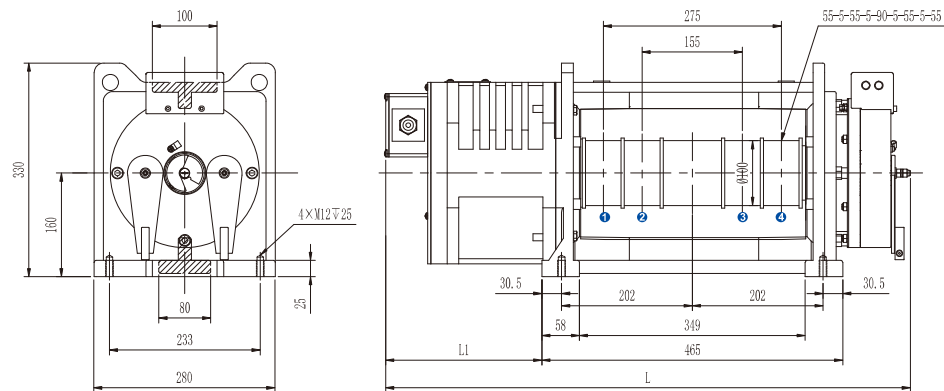


# MGD100K 4

PMS GEARLESS BELT TRACTION MACHINE

• Voltage	220V / 380V	• Traction Ratio	2:1
• Rated Load	(800~1150)kg	• Elv. Speed	(1.0~2.0)m/s
• Belt Sheave Dia.	Φ100mm	• Duty Cycle / Starts Per Hour	S5-40% / 240st/h
• Ingress Protection	IP41	• Insulation Class	F
• Max. Static Shaft Load	3000kg	• Weight(Max.)	160kg
☉ Brake Type	EMM600	Voltage / Current	DC110V / 2×1.2A (Standard) DC207V / 2×0.8A (Optional)

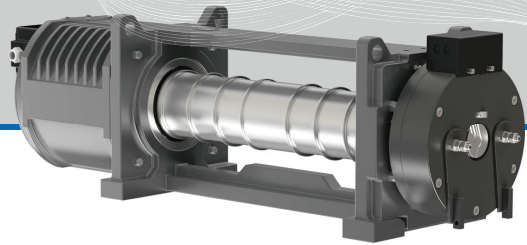
## DIMENSIONS



## SPEC. SHEET

Type	MGD100K												
Spec.	Load	Elv. Speed	Belt Sheave Dia.	Belt Groove	Voltage	Current	Power	Speed	Freq.	Torque	Poles	L	L1
	kg	m/s	mm		V	A	kW	r/min	Hz	N·m		mm	mm
Traction Ratio 2:1													
800-1.0	800	1.0	100	4×55	220 / 380	20 / 12	5.2	382	50.9	130	16	810	240
800-1.5	800	1.5		4×55	220 / 380	33 / 20	7.8	573	76.4	130	16		
800-1.75	800	1.75		4×55	220 / 380	33 / 20	9.1	668	89.1	130	16		
1000-1.0	1000	1.0	100	4×55	220 / 380	26 / 16	6.4	382	50.9	160	16	810	240
1000-1.5	1000	1.5		4×55	220 / 380	41 / 26	9.6	573	76.4	160	16		
1000-1.75	1000	1.75		4×55	220 / 380	41 / 26	11.2	668	89.1	160	16		
1000-2.0	1000	2.0		4×55	220 / 380	49 / 27	12.8	764	50.9	160	8		
1150-1.0	1150	1.0	100	4×55	220 / 380	28 / 17	7.2	382	50.9	180	16	870	300
1150-1.5	1150	1.5		4×55	220 / 380	48 / 28	10.8	573	76.4	180	16		
1150-1.75	1150	1.75		4×55	220 / 380	48 / 28	12.6	668	89.1	180	16		
1150-2.0	1150	2.0		4×55	220 / 380	53 / 31	14.4	764	50.9	180	8		

• Notes:  
 ⚠ \*1. For MRL only.

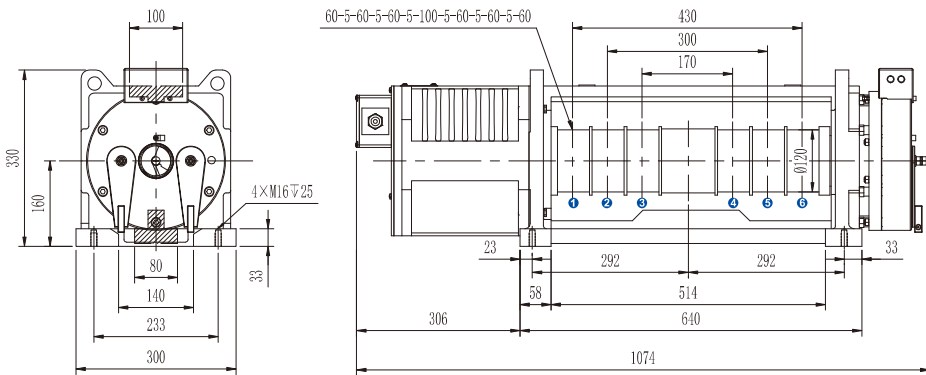


# MGD100K 6

PMS GEARLESS BELT TRACTION MACHINE

• Voltage	380V	• Traction Ratio	2:1
• Rated Load	(1250~1350)kg	• Elv. Speed	(1.0~2.0)m/s
• Belt Sheave Dia.	Φ120mm	• Duty Cycle / Starts Per Hour	S5-40% / 240st/h
• Ingress Protection	IP41	• Insulation Class	F
• Max. Static Shaft Load	3200kg	• Weight(Max.)	235kg
⊙ Brake Type	EMM600	Voltage / Current	DC110V / 2×1.2A (Standard) DC207V / 2×0.8A (Optional)

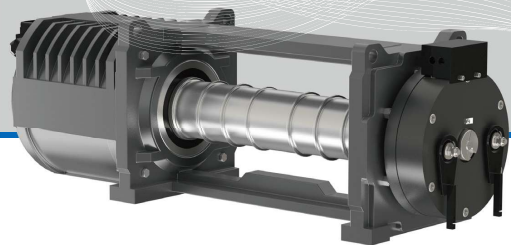
## DIMENSIONS



## SPEC. SHEET

Type	MGD100K									
Spec.	Load	Elv. Speed	Belt Sheave Dia.	Belt Groove	Current	Power	Speed	Freq.	Torque	Poles
	kg	m/s	mm		A	kW	r/min	Hz	N·m	
Traction Ratio 2:1										
1250-1.0	1250	1.0	120	6×60	18	7.8	318	42.4	235	16
1250-1.5	1250	1.5		6×60	29	11.7	477	63.6	235	16
1250-1.75	1250	1.75		6×60	29	13.7	557	74.3	235	16
1250-2.0	1250	2.0		6×60	33	16.0	637	84.9	235	16
1350-1.0	1350	1.0	120	6×60	19	8.5	318	42.4	250	16
1350-1.5	1350	1.5		6×60	32	12.7	477	63.6	250	16
1350-1.75	1350	1.75		6×60	32	14.8	557	74.3	250	16
1350-2.0	1350	2.0		6×60	35	16.9	637	84.9	250	16

• Notes:  
 ∠ \*1. For MRL only.

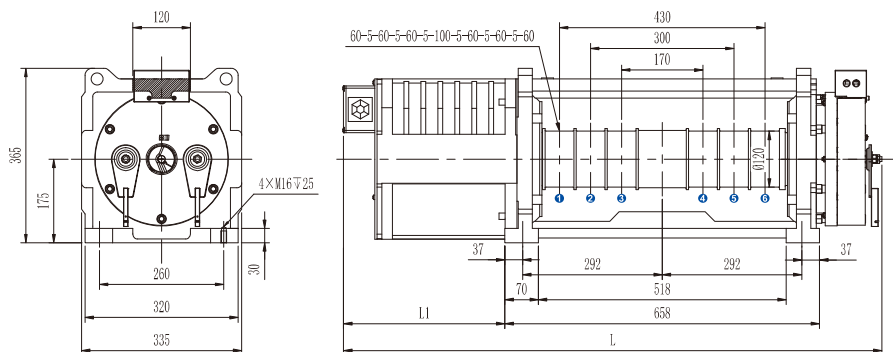


# MGD120

PMS GEARLESS BELT TRACTION MACHINE

• Voltage	380V	• Traction Ratio	2:1
• Rated Load	(1350~2000)kg	• Elv. Speed	(1.0~2.5)m/s
• Belt Sheave Dia.	Φ120mm	• Duty Cycle / Starts Per Hour	S5-40% / 240st/h
• Ingress Protection	IP41	• Insulation Class	F
• Max. Static Shaft Load	5000kg	• Weight(Max.)	285kg
☉ Brake Type	EMM600	Voltage / Current	DC110V / 2×1.5A (Standard) DC207V / 2×0.9A (Optional)

## DIMENSIONS

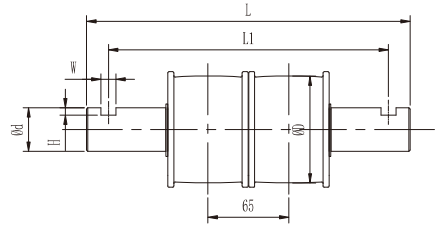
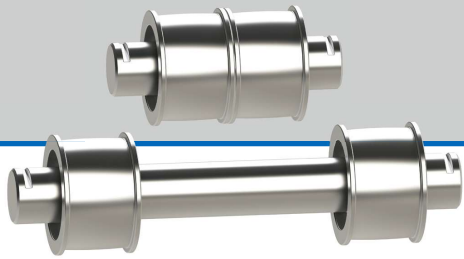


## SPEC. SHEET

Type	MGD120											
Spec.	Load	Elv. Speed	Pitch Dia.	Groove	Current	Power	Speed	Freq.	Torque	Poles	L	L1
	kg	m/s	mm		A	kW	r/min	Hz	N·m		mm	mm
Traction Ratio 2:1												
1350-1.0	1350	1.0	120	6×60	18	8.7	318	63.6	260	24	1085	300
1350-1.5	1350	1.5		6×60	27	13.0	477	95.4	260	24		
1350-1.75	1350	1.75		6×60	31	15.2	557	55.7	260	12		
1350-2.0	1350	2.0		6×60	36	17.3	637	63.7	260	12		
1350-2.5	1350	2.5		6×60	46	21.7	796	79.6	260	12		
1600-1.0	1600	1.0	120	6×60	22	10.3	318	63.6	310	24	1085	300
1600-1.5	1600	1.5		6×60	32	15.5	477	95.4	310	24		
1600-1.75	1600	1.75		6×60	37	18.1	557	55.7	310	12		
1600-2.0	1600	2.0		6×60	43	20.7	637	63.7	310	12		
1600-2.5	1600	2.5		6×60	55	25.8	796	79.6	310	12		
2000-1.0	2000	1.0	120	6×60	31	13.0	318	63.6	390	24	1125	340
2000-1.5	2000	1.5		6×60	43	19.5	477	95.4	390	24		
2000-1.75	2000	1.75		6×60	48	22.7	557	55.7	390	12		
2000-2.0	2000	2.0		6×60	55	26.0	637	63.7	390	12		
2000-2.5	2000	2.5		6×60	70	32.5	796	79.6	390	12		

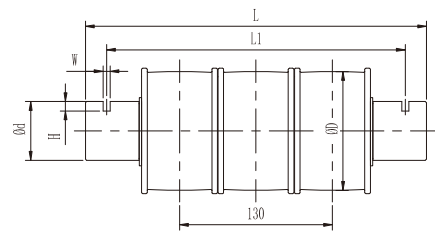
• Notes:  
 ∠ \*1, For MRL only.

# MGD GUIDE WHEEL



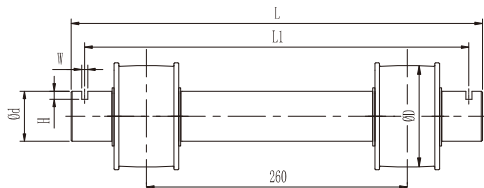
L	L1	H	W	ØD	Ød
250	230	6	6	65	35
196	150	6	6		35
207	187	6	6	87	35
200	174	6	6		35
200	157	5	5		35
260	225	8	6		35
285	259	10	7	100	50
200	166	8	6		50
260	225	8	6		35

For MGD100N2



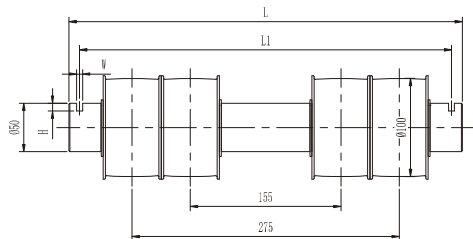
L	L1	H	W	ØD	Ød
290	254	8	6	100	50
312	290	8	6		50

For MGD100N3/MGD100N5/MGD100K3/MGD100K6/MGD120



L	L1	H	W	ØD	Ød
405	361	6	6	65	35
405	383	8	6		35
410	383	8	6	100	50
405	361	8	6		50
455	420	6	12		35
405	361	8	6		35

For MGD100N5



L	L1	H	W
405	383	8	6
405	377	8	7

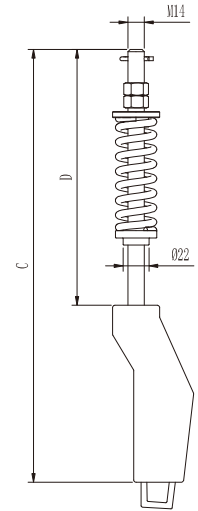
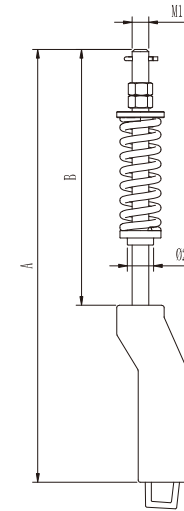
For MGD100K4

Notes:  
 \*1. Custom size of accessories available.

## COMPONENT PARTS



### Rope Socket Assembly



A	B
330	200
400	270
470	340

For MGD100K3/MGD100K4/MGD100K6/MGD120

C	D
330	180
375	230
440	292

For MGD100N

### BROKEN TAPE DETECTION ASSEMBLY

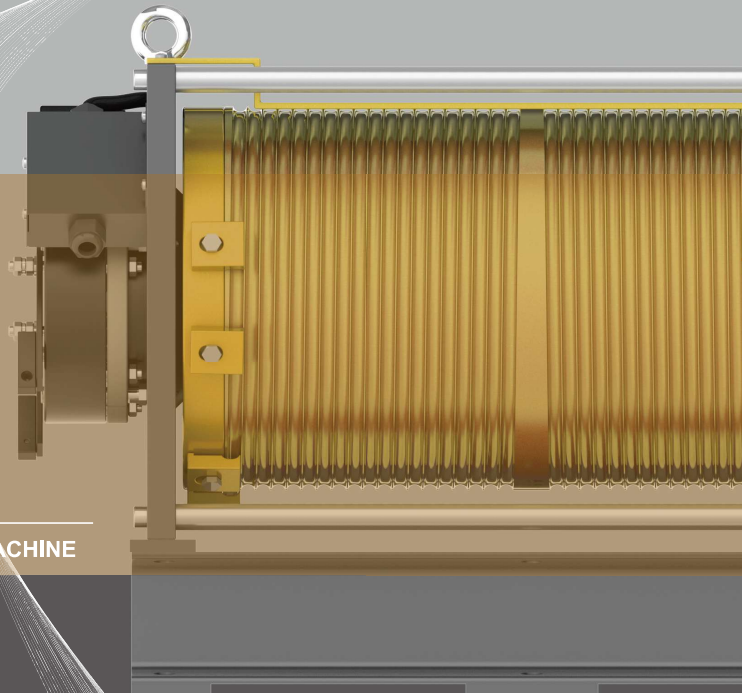


### STEEL BELT



MONADRIVE®  
**MQ**

PMS POSITIVE DRIVE MACHINE

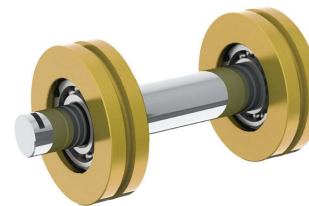


MONADRIVE®

MQ SERIES INCLUDES

- Load Q+P (500-700) kg  
Speed (0.15-0.3) m/s
MQ180 •
- Load Q+P (600-1000) kg  
Speed (0.3-0.4) m/s
MQ270 •
- Load Q+P (600-700) kg  
Speed 0.3 m/s
MQ230 •
- Load Q+P (800-1000) kg  
Speed (0.3-0.4) m/s
MQ290 •
- Load Q+P (600-1000) kg  
Speed (0.3-0.63) m/s
MQ320 •

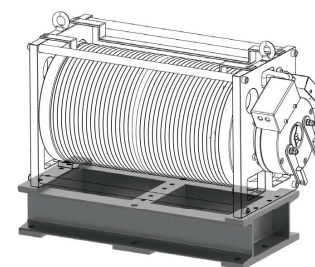
OPTIONAL ACCESSORIES



GUIDE WHEEL



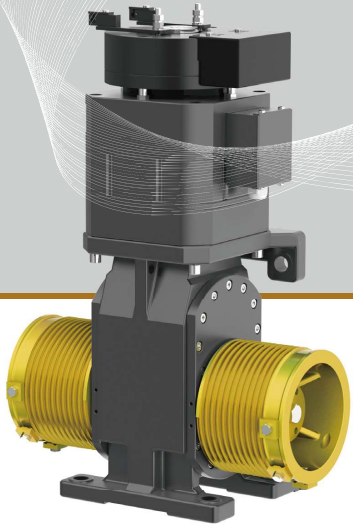
WIROPE



INSTALLATION SEAT



ROPE SOCKET ASSEMBLY



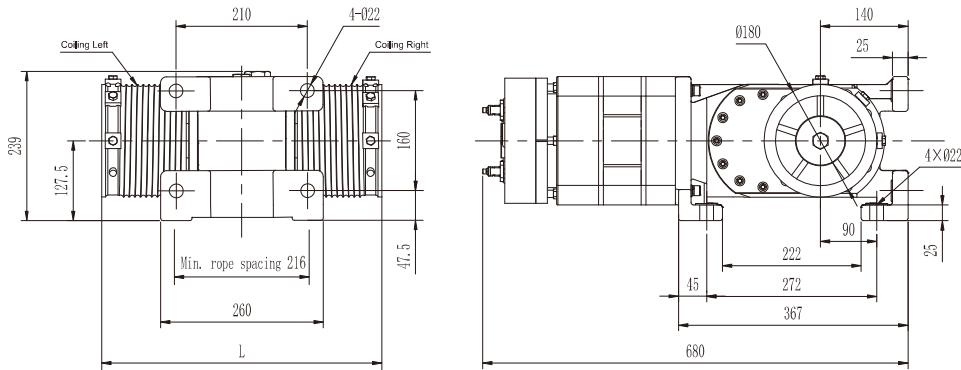
# MQ180

PMS POSITIVE DRIVE MACHINE

• Voltage	220V / 380V	• Traction Ratio	1:1
• Rated Load(Q+P)	(500~700)kg	• Elv. Speed	(0.15~0.3)m/s
• Sheave Dia.	Φ180mm	• Duty Cycle / Starts Per Hour	S5-25% / 180st/h
• Ingress Protection	IP41	• Insulation Class	F
• Max. Static Shaft Load	2000kg	• Weight(Max.)	115kg

⊕ Brake Type	<b>EMM600</b>	Voltage / Current	DC110V / 2×1.2A (Standard)	DC207V / 2×0.8A (Optional)
--------------	---------------	-------------------	----------------------------	----------------------------

## DIMENSIONS



## SPEC.SHEET

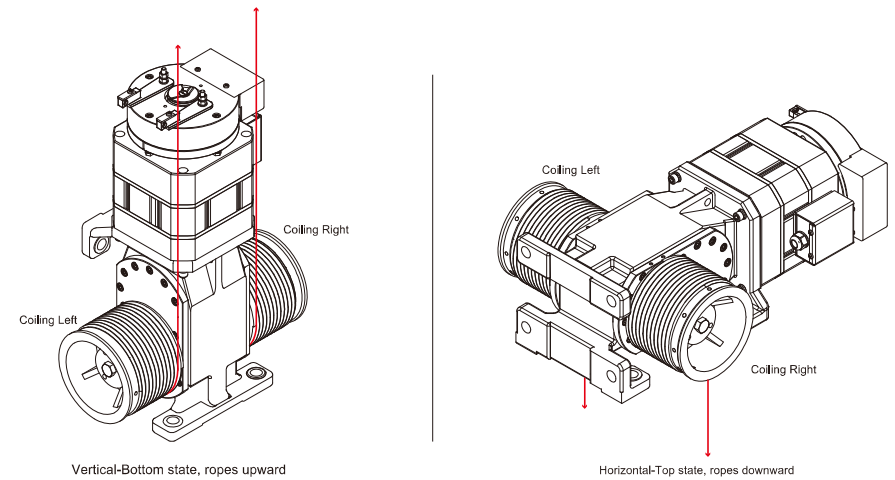
Type	MQ180								
Load(Q+P)	Elv. Speed	Pitch Dia.	Voltage	Current	Power	Speed	Freq.	Sheave Torque	Poles
kg	m/s	mm	V	A	kW	r/min	Hz	N·m	
Traction Ratio 1:1									
500	0.15	180	220 / 380	4	0.8	242	20.2	455	10
500	0.3	180	220 / 380	8 / 4	1.5	484	40.3	455	10
600	0.15	180	220 / 380	5	0.9	242	20.2	546	10
600	0.3	180	220 / 380	9 / 5	1.8	484	40.3	546	10
700	0.15	180	220 / 380	5	1.1	242	20.2	637	10
700	0.3	180	220 / 380	9 / 5	2.1	484	40.3	637	10

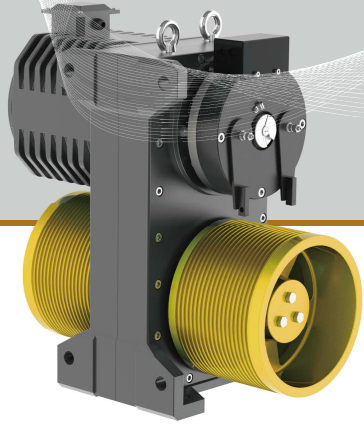
• Notes:  
 ∠ \*1. For MRL only.  
 ∠ \*2. The machine is equipped with electrical brake release device.

## RECOMMENDATION FORM

Rope diam. (mm)	Turns×slot pitch (mm)	Lifting height (m)	L(mm)
Φ8	10×9	≤4.5	472
Φ8	15×9	4.5 < H ≤ 7.5	562

## DIMENSIONS





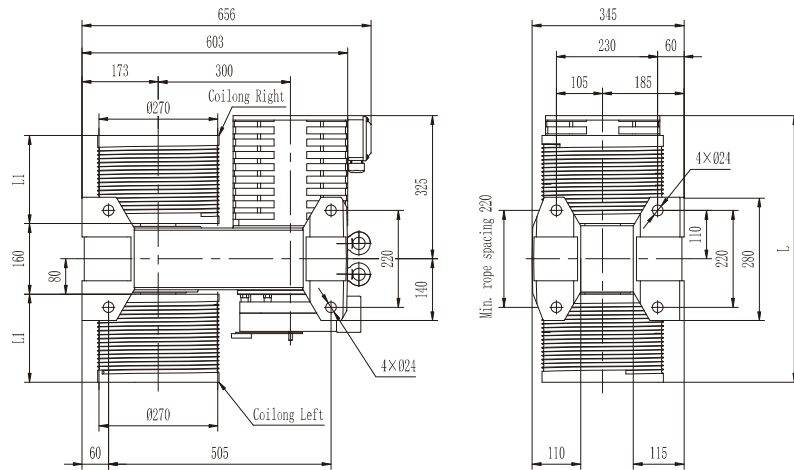
# MQ270

PMS POSITIVE DRIVE MACHINE

• Voltage	220V / 380V	• Traction Ratio	1:1
• Rated Load(Q+P)	(600~1000)kg	• Elv. Speed	(0.3~0.4)m/s
• Sheave Dia.	Φ270mm	• Duty Cycle / Starts Per Hour	S5-25% / 180st/h
• Ingress Protection	IP41	• Insulation Class	F
• Max. Static Shaft Load	2500kg	• Weight(Max.)	280kg

⊕ Brake Type **EMM600** Voltage / Current DC110V / 2×1.2A (Standard) DC207V / 2×0.8A (Optional)

## DIMENSIONS



## SPEC.SHEET

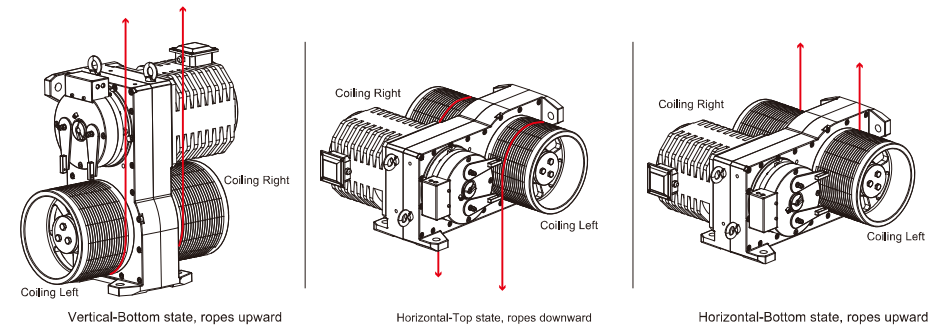
Type	MQ270								
Load(Q+P)	Elv. Speed	Pitch Dia.	Voltage	Current	Power	Speed	Freq.	Sheave Torque	Poles
kg	m/s	mm	V	A	kW	r/min	Hz	N·m	
<b>Traction Ratio 1:1</b>									
600	0.3	270	220/380	7	1.8	170	22.7	800	16
600	0.4		220/380	10	2.4	226	30.1	800	16
700	0.3	270	220/380	8	2.1	170	22.7	960	16
700	0.4		220/380	11	2.8	226	30.1	960	16
800	0.3	270	220/380	9	2.4	170	22.7	1040	16
800	0.4		220/380	12	3.2	226	30.1	1040	16
900	0.3	270	220/380	11	2.7	170	22.7	1200	16
900	0.4		220/380	14	3.5	226	30.1	1200	16
1000	0.3	270	220/380	12	3.0	170	22.7	1360	16
1000	0.4		220/380	16	4.0	226	30.1	1360	16

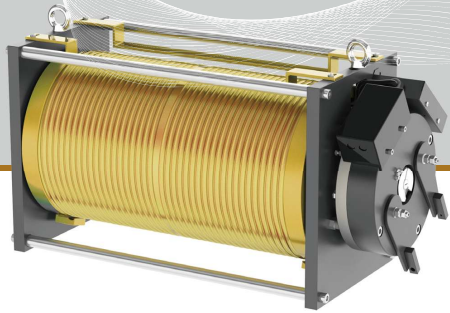
• Notes:  
 ∠ \*1. For MRL only.  
 ∠ \*2. The machine is equipped with electrical brake release device.

## RECOMMENDATION FORM

Rope diam. (mm)	Lifting height (m)	L(mm)	L1(mm)	Notes
Φ8	≤12	605	200	<b>Standard</b>
	12 < H ≤ 15	645	240	Optional
	15 < H ≤ 20	765	300	Optional
Φ10	≤9	605	200	<b>Standard</b>
	9 < H ≤ 12	645	240	Optional
	12 < H ≤ 16	765	300	Optional

## DIMENSIONS





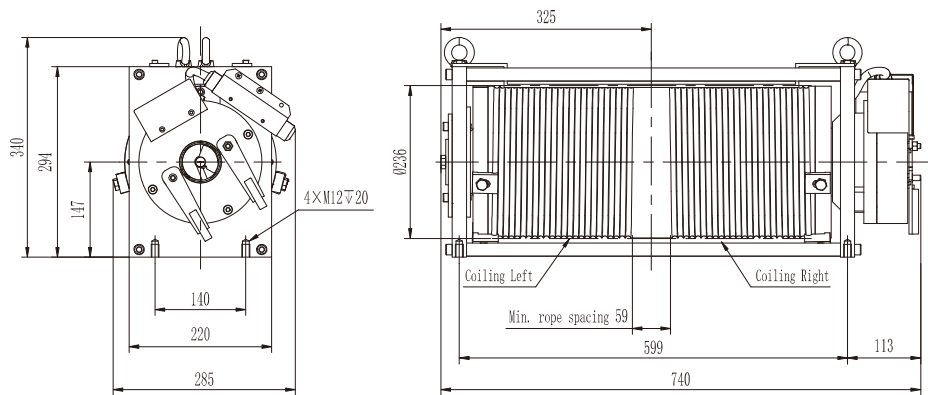
# MQ230

PMS POSITIVE DRIVE MACHINE

• Voltage	220V / 380V	• Traction Ratio	1:1
• Rated Load(Q+P)	(600~700)kg	• Elv. Speed	0.3m/s
• Sheave Dia.	Φ236mm	• Duty Cycle / Starts Per Hour	S5-25% / 180st/h
• Ingress Protection	IP41	• Insulation Class	F
• Max. Static Shaft Load	2000kg	• Weight(Max.)	200kg

⊕ Brake Type	<b>EMM600</b>	Voltage / Current	DC110V / 2×1.2A (Standard)	DC207V / 2×0.8A (Optional)
--------------	---------------	-------------------	----------------------------	----------------------------

## DIMENSIONS



## SPEC.SHEET

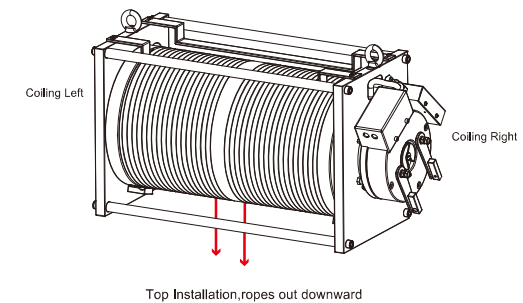
Type	MQ230								
Load(P+Q)	Elv. Speed	Pitch Dia.	Voltage	Current	Power	Speed	Freq.	Sheave Torque	Poles
kg	m/s	mm	V	A	kW	r/min	Hz	N·m	
Traction Ratio 1:1									
600	0.3	236	220/380	9	2.0	173	14.4	700	10
700	0.3	236	220/380	11	2.4	173	14.4	840	10

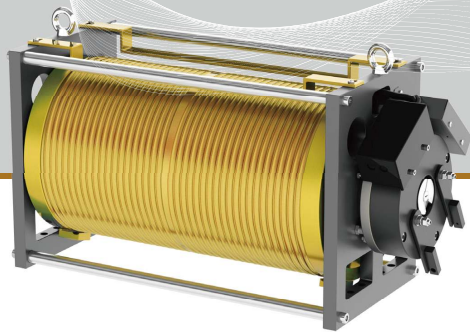
- Notes:
- ∠ \*1. For MRL only.
- ∠ \*2. The machine can be equipped with mounting base optionally.

## RECOMMENDATION FORM

Rope diam. (mm)	Turns×slot pitch (mm)	Lifting height (m)	Notes
Φ8	24×9	≤18	Standard

## DIMENSIONS





# MQ290

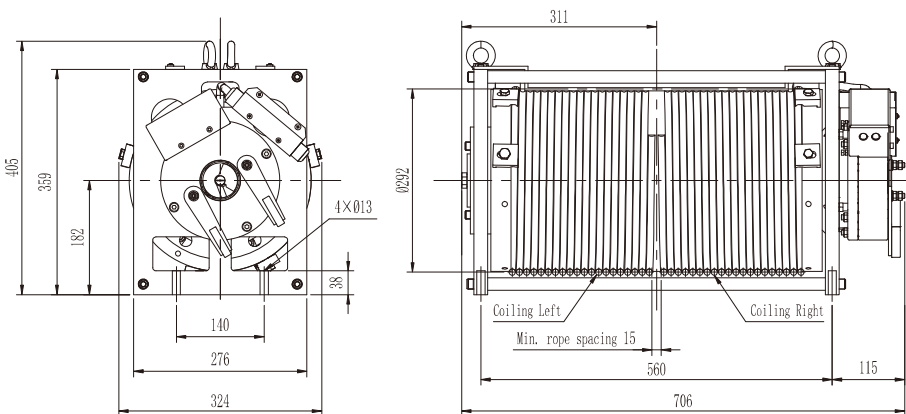
PMS POSITIVE DRIVE MACHINE

• Voltage	220V / 380V
• Rated Load(Q+P)	(800~1000)kg
• Sheave Dia.	Φ292mm
• Ingress Protection	IP41
• Max. Static Shaft Load	2000kg

• Traction Ratio	1:1
• Elv. Speed	(0.3~0.4)m/s
• Duty Cycle / Starts Per Hour	S5-25% / 180st/h
• Insulation Class	F
• Weight(Max.)	215kg

⊕ Brake Type	<b>EMM600</b>	Voltage / Current	DC110V / 2×1.2A (Standard)	DC207V / 2×0.8A (Optional)
--------------	---------------	-------------------	----------------------------	----------------------------

## DIMENSIONS



## SPEC.SHEET

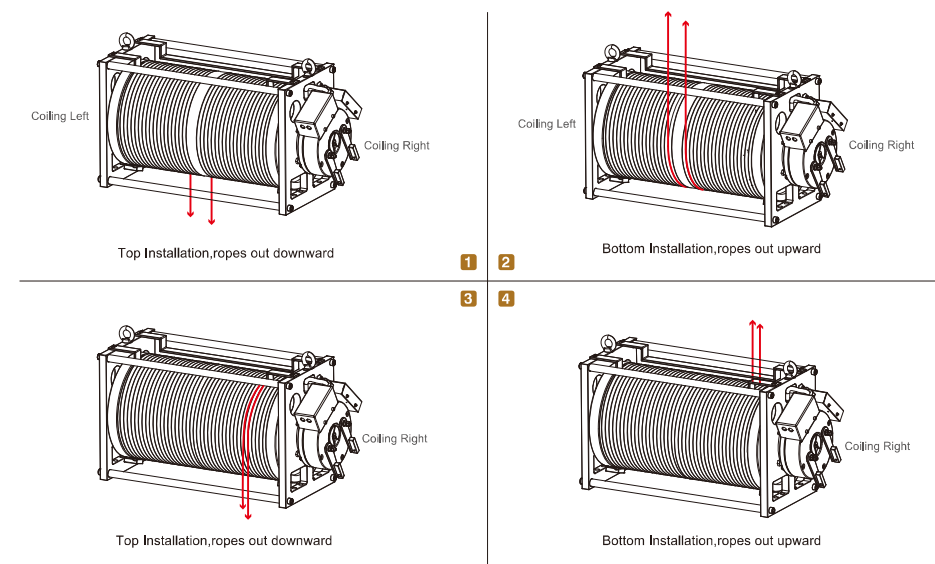
Type	MQ290								
Load(Q+P)	Elv. Speed	Pitch Dia.	Voltage	Current	Power	Speed	Freq.	Sheave Torque	Poles
kg	m/s	mm	V	A	kW	r/min	Hz	N·m	
Traction Ratio 1:1									
800	0.3	292	220 / 380	15 / 8	2.4	196	26.1	1200	16
800	0.4		220 / 380	15 / 8	3.2	261	34.8	1200	16
900	0.3	292	220 / 380	16 / 9	2.7	196	26.1	1300	16
900	0.4		220 / 380	16 / 9	3.6	261	34.8	1300	16
1000	0.3	292	220 / 380	18 / 10	3.0	196	26.1	1500	16
1000	0.4		220 / 380	18 / 10	4.0	261	34.8	1500	16

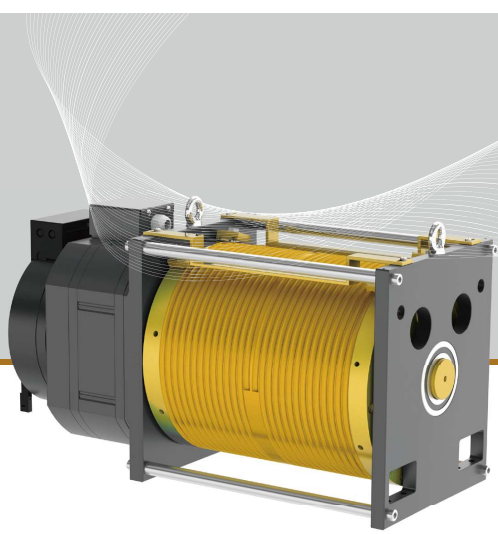
- Notes:
- ∠ \*1. For MRL only.
- ∠ \*2. The machine can be equipped with mounting base optionally.

## RECOMMENDATION FORM

Rope diam. (mm)	Turns×slot pitch (mm)	Lifting height (m)	Notes
Φ8	25×9	≤20	Standard
Φ10	19.5×11.5	≤15	Standard

## DIMENSIONS





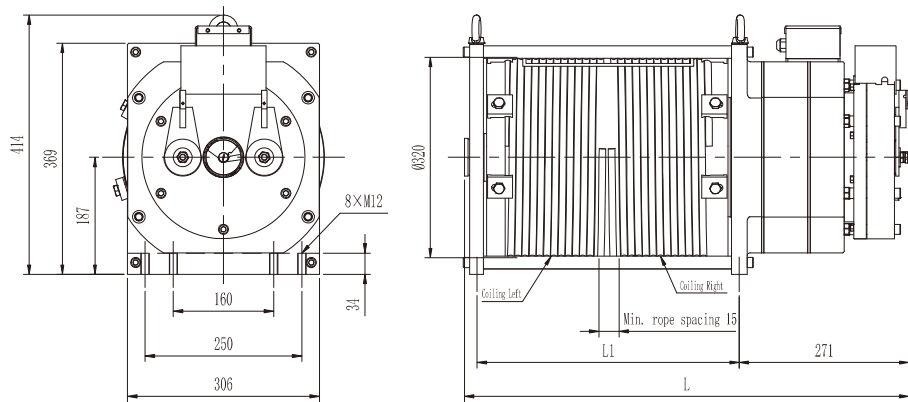
# MQ320

PMS POSITIVE DRIVE MACHINE

• Voltage	220V / 380V	• Traction Ratio	1:1
• Rated Load(Q+P)	(600~1000)kg	• Elv. Speed	(0.3~0.63)m/s
• Sheave Dia.	Φ320mm	• Duty Cycle / Starts Per Hour	S5-25% / 180st/h
• Ingress Protection	IP41	• Insulation Class	F
• Max. Static Shaft Load	2000kg	• Weight(Max.)	210kg

⊕ Brake Type **EMM600** Voltage / Current DC110V / 2×1.2A (Standard) DC207V / 2×0.8A (Optional)

## DIMENSIONS



## SPEC.SHEET

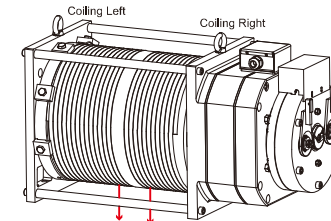
Type	MQ320								
Load(Q+P) kg	Elv. Speed m/s	Pitch Dia. mm	Voltage V	Current A	Power kW	Speed r/min	Freq. Hz	Sheave Torque N·m	Poles
Traction Ratio 1:1									
600	0.3	320	220 / 380	10 / 6	1.8	133	17.7	970	16
600	0.4		220 / 380	10 / 6	2.4	178	23.7	970	16
600	0.63		220 / 380	17 / 10	3.8	280	37.3	970	16
800	0.3	320	220 / 380	13 / 8	2.4	133	17.7	1300	16
800	0.4		220 / 380	13 / 8	3.2	178	23.7	1300	16
800	0.63		220 / 380	23 / 13	5.0	280	37.3	1300	16
900	0.3	320	220 / 380	14 / 9	2.7	133	17.7	1450	16
900	0.4		220 / 380	14 / 9	3.6	178	23.7	1450	16
900	0.63		220 / 380	25 / 14	5.7	280	37.3	1450	16
1000	0.3	320	220 / 380	16 / 10	3.0	133	17.7	1600	16
1000	0.4		220 / 380	16 / 10	4.0	178	23.7	1600	16
1000	0.63		220 / 380	27 / 16	6.3	280	37.3	1600	16

• Notes:  
 ∠ \*1. For MRL only.  
 ∠ \*2. The machine can be equipped with mounting base optionally.

## RECOMMENDATION FORM

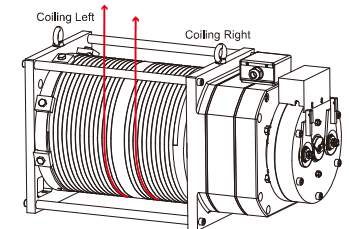
Rope diam. (mm)	Turns×slot pitch (mm)	Lifting height (m)	L(mm)	L1(mm)
Φ8 / Φ10	12×9 / 10.5×11.5	≤9	665	350
	16×9 / 13.5×11.5	9 < H ≤ 12	734	419
	20×9 / 16.5×11.5	12 < H ≤ 15	803	488

## DIMENSIONS



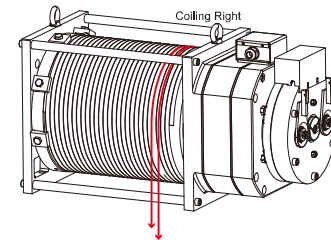
Top Installation, ropes out downward

1 2

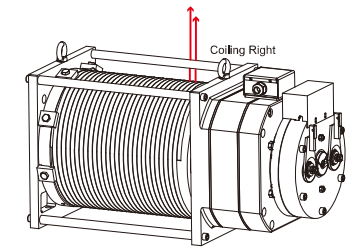


Bottom Installation, ropes out upward

3 4

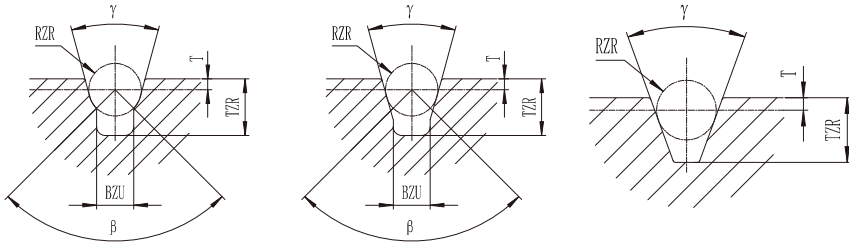


Top Installation, ropes out downward



Bottom Installation, ropes out upward

## SHEAVE GROOVE



U-shape undercut groove

V-shape undercut groove

V-shape groove

- The groove shape can be customized.
- V-shape groove needs to be hardened.

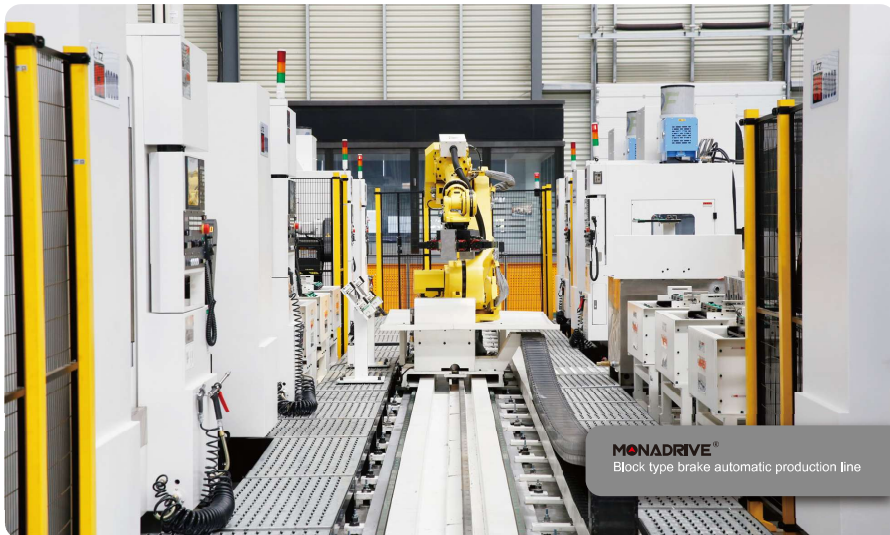
## BRAKE



EMK block brake for MCK/MCB



EMM disk brake for MONA/MGD/MQ



2026

Copyright © 2026 Monadrive  
We will keep you posted on any data changes

**MONADRIVE**®