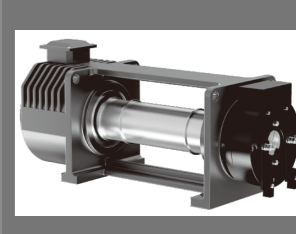
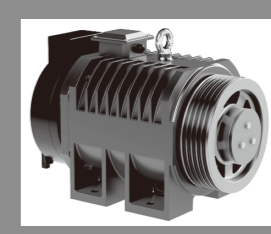
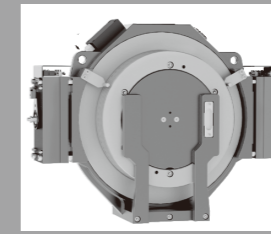
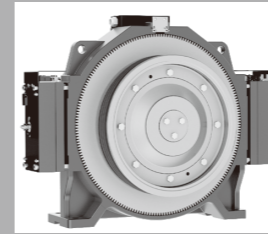
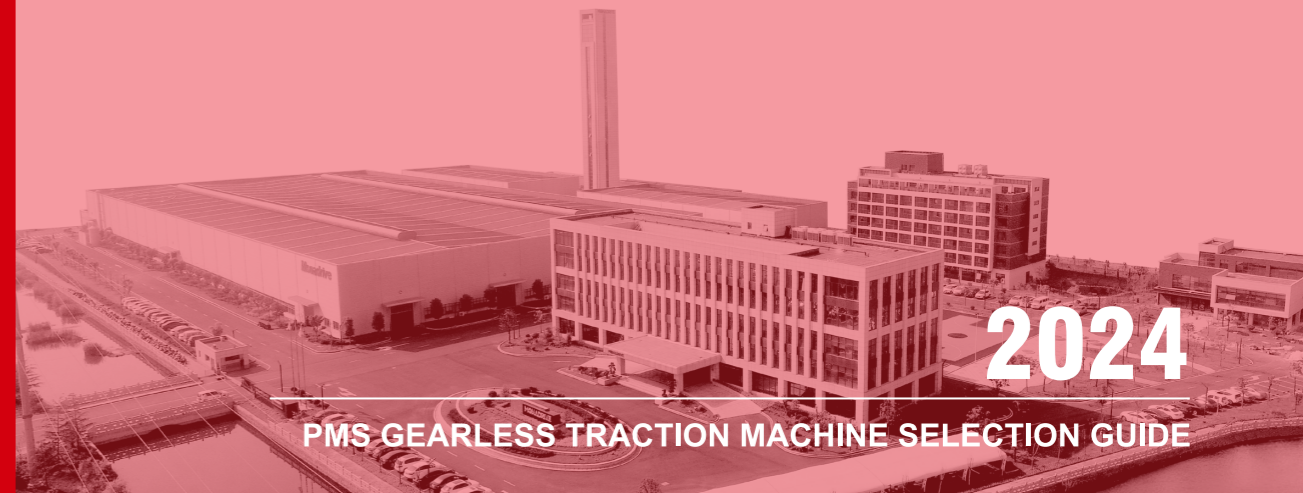
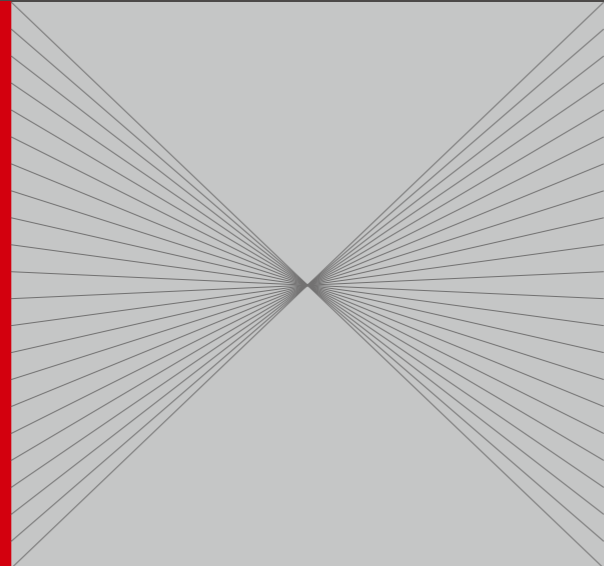


FOCUS · INNOVATION · EXCELLENT

TRACTION MACHINE



**MONA
DRIVE**



2024

PMS GEARLESS TRACTION MACHINE SELECTION GUIDE

SUZHOU MONA DRIVE EQUIPMENT CO.,LTD.

Address:No.66,Changfengdang Rd.,Lili Town,Wujiang District,Suzhou,China.

Email: zhangap@monadrive.cn

dongshi@monadrive.cn

Tel : (+86) 512 63080025

Web : www.monadrive.cn

MONADRIVE®

SUZHOU MONA DRIVE EQUIPMENT CO.,LTD.

COMPANY INTRODUCITON

Monadrive is a leading manufacturer of PMS gearless traction machine with its headquarter located in the Yangtze River Delta demonstration area and covered about 60,000 square meters. Integrating technology research, product manufacturing and sales, and after-sales service, Monadrive is committed to providing customized drive machine solutions with advanced technology.

Focusing on independent research and innovation, it establishes Jiangsu Province Enterprise Technology Center, Suzhou Industrial Design Center and Engineering Technology Research Center, and is awarded many honors like High-Tech Enterprise, Intelligent Industrial Demonstration Enterprise and Provincial Private Technology Enterprise.

For 20 years' development and with professional technology, high quality and excellent service, Monadrive has been widely recognized by customers and has established long-term good cooperation with many well-known elevator companies at home and abroad.

In 2022, Monadrive's Automated Casting Factory starts full operation, increasing new production lines with advanced equipment, to promote the company for a higher intelligent level and a qualitative leap. Based on China and going to the world, Monadrive devotes itself to achieving comprehensive and sustainable development, create smarter technical service and open a new chapter of "MONA Intelligence, Drive the Future".

MONADRIVE®

CONTENTS

MCK SERIES

MCK100E	03
MCK200	05
MCK200E	07
MCK300E	09
MCK500E	11
MCK500	13

MGD SERIES

MGD87	29
MGD100	31
MGD100B	33
MGD100N2	35
MGD100N3	37
MGD100N5	39
MGD100K3	41
MGD100K4	43
MGD100K6	45
MGD120	47

MONA SERIES

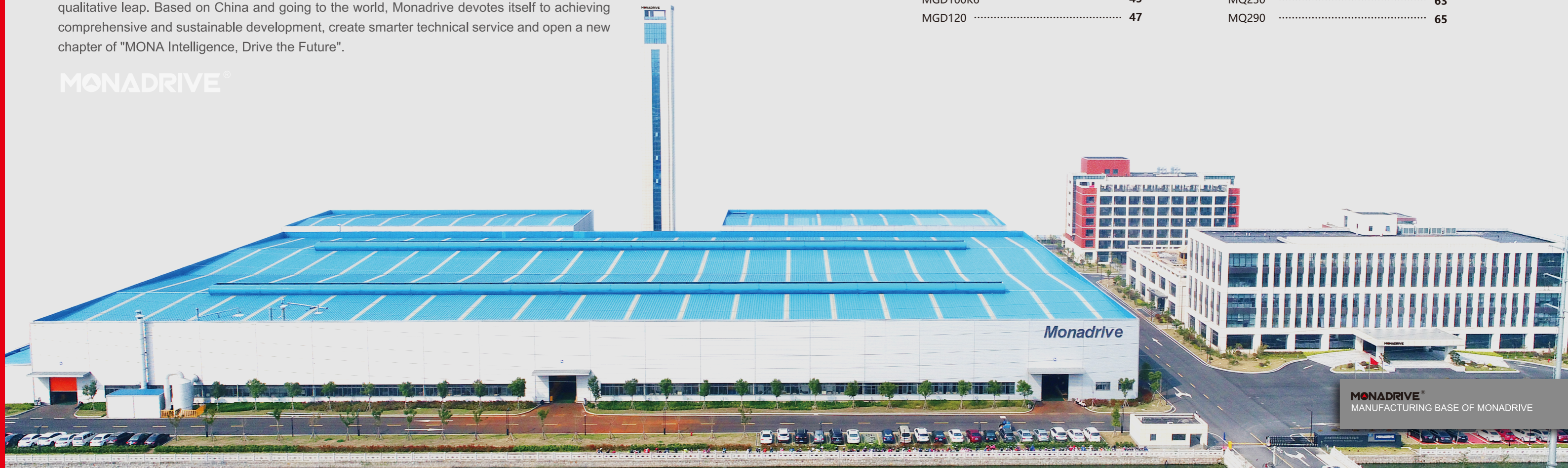
MONA120	17
MONA180	19
MONA200	21
MONA200A	23
MONA320	25

MCB SERIES

MCB100	53
MCB200	55
MCB300	57

MQ SERIES

MQ270	61
MQ230	63
MQ290	65



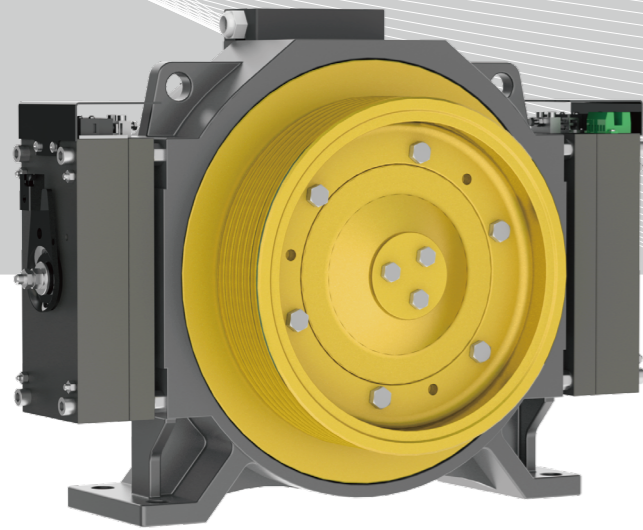
MONADRIVE®
MCK

PMS GEARLESS TRACTION MACHINE

MONADRIVE®

MCK SERIES INCLUDES

Load(320~1000)kg Speed(1.0~1.6)m/s	MCK100E●
Load(630~1250)kg Speed(1.0~2.5)m/s	MCK200●
Load(630~1250)kg Speed(1.0~2.5)m/s	MCK200E●
Load(1250~1600)kg Speed(1.0~2.5)m/s	MCK300E●
Load(1600~2500)kg Speed(1.0~2.5)m/s	MCK500E●
Load 3000kg Speed(1.0~2.5)m/s	MCK500●



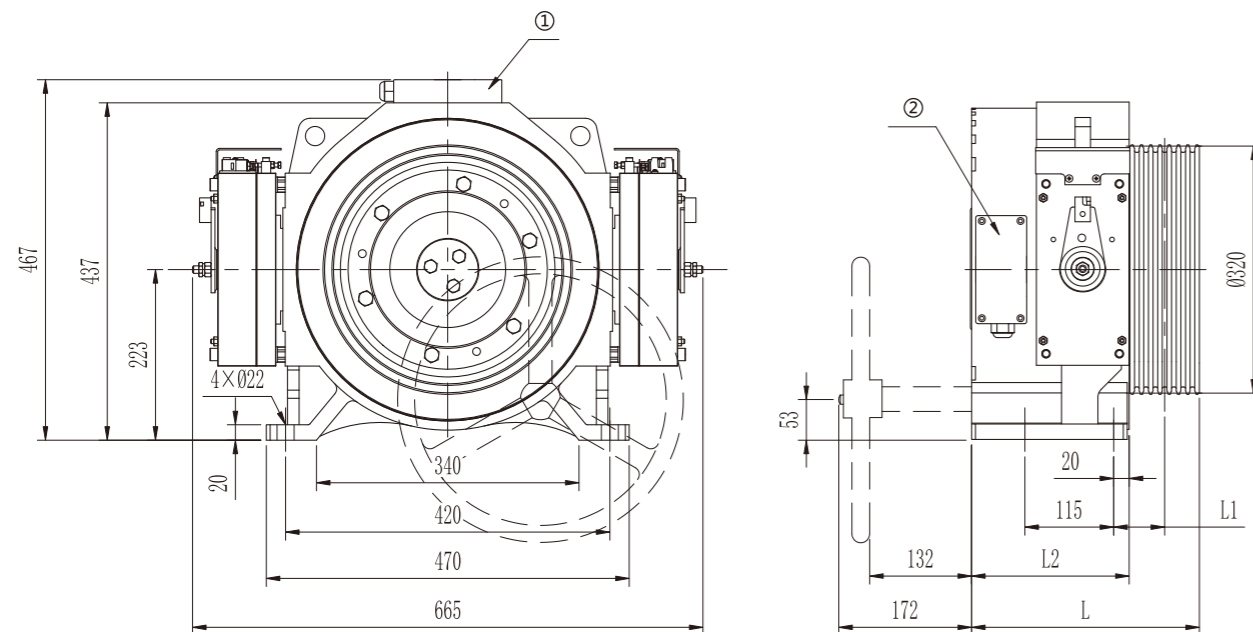
MCK100 ^E

PMS GEARLESS TRACTION MACHINE

• Voltage	380V	• Roping	2:1
• Load	(320~1000)kg	• Elv. Speed	(1.0~1.6)m/s
• Sheave Diam.	Φ320mm	• Duty / Starts Per Hour	S5-40% / 240st/h
• Shell Protection Grade	IP41	• Ins. Grade	F
• Max. Axle Load	3000kg	• Weight	210kg

⊙ Brake Type	EMK7K	Voltage / Current	DC110V / 2×1.3A (Standard)	DC207V / 2×0.8A (Optional)
--------------	--------------	-------------------	----------------------------	----------------------------

DIMENSIONS

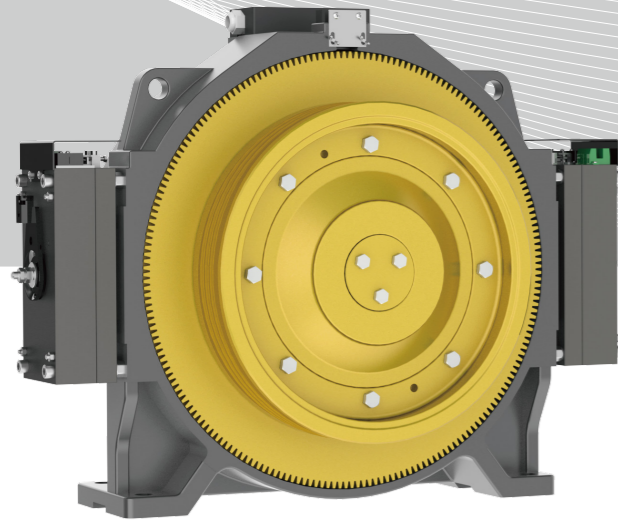


- Notes:
- ① Terminal box position when load ≤800kg.
- ② Terminal box position when load =1000kg.

SPEC.SHEET

Type	MCK100																	
Spec.	Load	Elv. Speed	Sheave Diam.	Sheave Groove	Current	Power	Speed	Freq.	Torque	Poles	L	L1	L2	β Angle				
	kg	m/s	mm		A	kW	r/min	Hz	N·m		mm	mm	mm	°				
320-1.0	320	1.0	320	3×Φ8×12	5	2.2	119	23.8	180	24	225	52	163	95				
320-1.6	320	1.6		3×Φ8×12	8	3.6	191	38.2	180	24								
450-1.0	450	1.0	320	4×Φ8×12	7	2.7	119	23.8	220	24	225	52	163		95			
450-1.6	450	1.6		4×Φ8×12	11	4.4	191	38.2	220	24								
630-1.0	630	1.0	320	5×Φ8×12	10	3.9	119	23.8	310	24	235	57	163			95		
630-1.6	630	1.6		5×Φ8×12	16	6.2	191	38.2	310	24								
800-1.0	800	1.0	320	6×Φ8×12	13	5.1	119	23.8	410	24	245	61	163				95	
800-1.6	800	1.6		6×Φ8×12	22	8.2	191	38.2	410	24								
1000-1.0	1000	1.0	320	7×Φ8×12	16	6.4	119	23.8	510	24	295	66	204					95
1000-1.6	1000	1.6		7×Φ8×12	26	10.2	191	38.2	510	24								

- Notes:
- ① *1. The machine can also be used for machine roomless.
- ② *2. Front handwheel is applicable for this model.
- ③ *3. The undercut angle is recommended value, and it's optional according to practical condition.



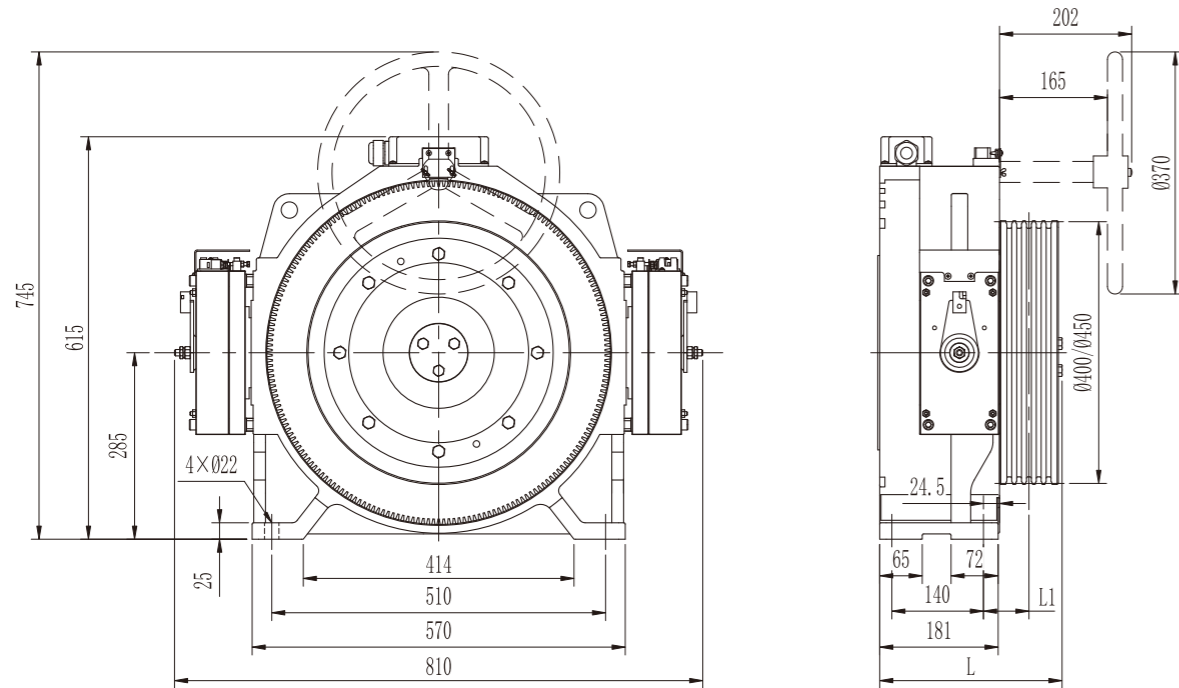
MCK200

PMS GEARLESS TRACTION MACHINE

• Voltage	380V	• Roping	1:1 / 2:1
• Load	(630~1250)kg	• Elv. Speed	(1.0~2.5)m/s
• Sheave Diam.	Φ400mm/Φ450mm	• Duty / Starts Per Hour	S5-40% / 240st/h
• Shell Protection Grade	IP41	• Ins. Grade	F
• Max. Axle Load	3500kg	• Weight	305kg

☉ Brake Type	EMK9K	Voltage / Current	DC110V / 2×1.3A (Standard)	DC207V / 2×0.83A (Optional)
--------------	-------	-------------------	----------------------------	-----------------------------

DIMENSIONS



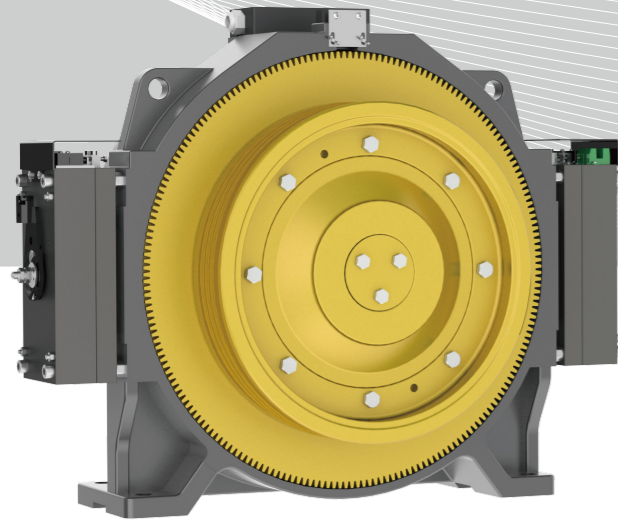
SPEC.SHEET



Type	MCK200													
Spec.	Load	Elv. Speed	Sheave Diam.	Sheave Groove	Current	Power	Speed	Freq.	Torque	Poles	L	L1	β Angle ^{*3}	
	kg	m/s	mm		A	kW	r/min	Hz	N·m		mm	mm	°	
Roping 1:1														
400-1.0	400	1.0	400	5×Φ10×15	8	2.6	48	12.8	520	32	280	69.5	95	
400-1.6	400	1.6		5×Φ10×15	11	4.1	76	20.3	520	32				
450-1.0	450	1.0	400	5×Φ10×15	9	3.0	48	12.8	590	32	280	69.5		
450-1.6	450	1.6		5×Φ10×15	12	4.7	76	20.3	590	32				
500-1.0	500	1.0	400	5×Φ10×15	10	3.3	48	12.8	650	32	280	69.5		
500-1.6	500	1.6		5×Φ10×15	14	5.2	76	20.3	650	32				
550-1.0	550	1.0	400	6×Φ10×15	11	3.5	48	12.8	700	32	292	75.5		
550-1.6	550	1.6		6×Φ10×15	15	5.6	76	20.3	700	32				
630-1.0	630	1.0	400	6×Φ10×15	13	4.0	48	12.8	800	32	292	75.5		
630-1.6	630	1.6		6×Φ10×15	17	6.4	76	20.3	800	32				
Roping 2:1														
630-1.0	630	1.0	400	4×Φ10×15	10	4.2	95	25.3	420	32	280	69.5		
630-1.6	630	1.6		4×Φ10×15	16	6.7	153	40.8	420	32				
630-2.0	630	2.0		4×Φ10×15	18	8.4	191	50.9	420	32				
800-1.0	800	1.0	400	5×Φ10×15	12	5.2	95	25.3	520	32	280	69.5		
800-1.6	800	1.6		5×Φ10×15	20	8.3	153	40.8	520	32				
800-2.0A	800	2.0		5×Φ10×15	23	10.4	191	50.9	520	32				
800-2.5A	800	2.5		6×Φ10×15	28	13.0	239	63.7	520	32				
1000-1.0	1000	1.0		400	5×Φ10×15	15	6.5	95	25.3	650			32	280
1000-1.6	1000	1.6	5×Φ10×15		26	10.4	153	40.8	650	32				
1000-2.0A	1000	2.0	5×Φ10×15		28	13.0	191	50.9	650	32				
1000-2.5A	1000	2.5	6×Φ10×15		34	16.3	239	63.7	650	32				
1150-1.0A	1150	1.0	400		5×Φ10×15	17	7.5	95	25.3	750	32	280	69.5	
1150-1.6A	1150	1.6		6×Φ10×15	29	12.0	153	40.8	750	32				
1150-2.0A	1150	2.0		6×Φ10×15	33	15.0	191	50.9	750	32				
800-2.0B	800	2.0	450	5×Φ10×15	23	10.5	170	45.3	590	32	280	69.5		
800-2.5B	800	2.5		5×Φ10×15	29	13.1	212	56.5	590	32				
1000-2.0B	1000	2.0	450	5×Φ10×15	28	13.0	170	45.3	730	32	280	69.5		
1000-2.5B	1000	2.5		6×Φ10×15	36	16.2	212	56.5	730	32				
1150-1.0B	1150	1.0	450	5×Φ10×15	18	7.1	85	22.7	800	32	280	69.5		
1150-1.6B	1150	1.6		6×Φ10×15	30	11.4	136	36.3	800	32				

Notes:

- *1. The machine can also be used for machine roomless.
- *2. Rear handwheel is applicable for this model.
- *3. The undercut angle is recommended value.
- ☑ 1) Undercut angle can be customized according to practical requirements.
- ☑ 2) Elv. speed>1.0m/s in machine room, can increase undercut angle appropriately.



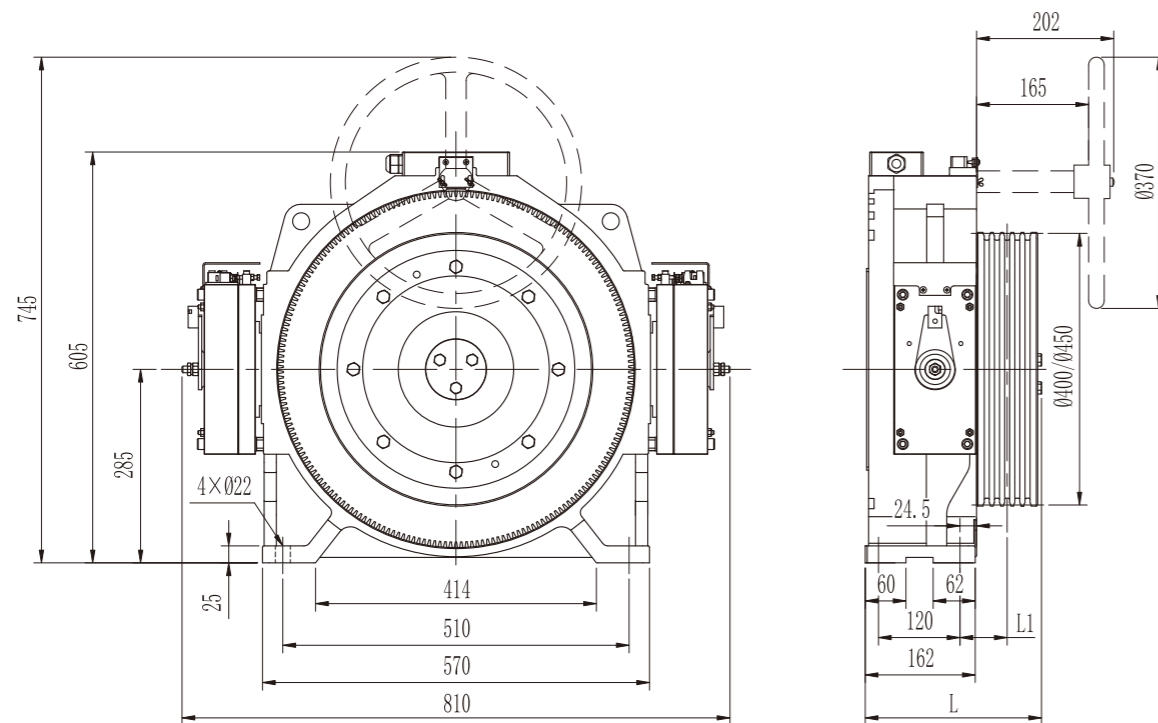
MCK200 ^E

PMS GEARLESS TRACTION MACHINE

• Voltage	380V	• Roping	1:1 / 2:1
• Load	(630~1250)kg	• Elv. Speed	(1.0~2.5)m/s
• Sheave Diam.	Φ400mm/Φ450mm	• Duty / Starts Per Hour	S5-40% / 240st/h
• Shell Protection Grade	IP41	• Ins. Grade	F
• Max. Axle Load	3500kg	• Weight	290kg

☉ Brake Type	EMK9K	Voltage / Current	DC110V / 2×1.3A (Standard)	DC207V / 2×0.83A (Optional)
--------------	-------	-------------------	----------------------------	-----------------------------

DIMENSIONS

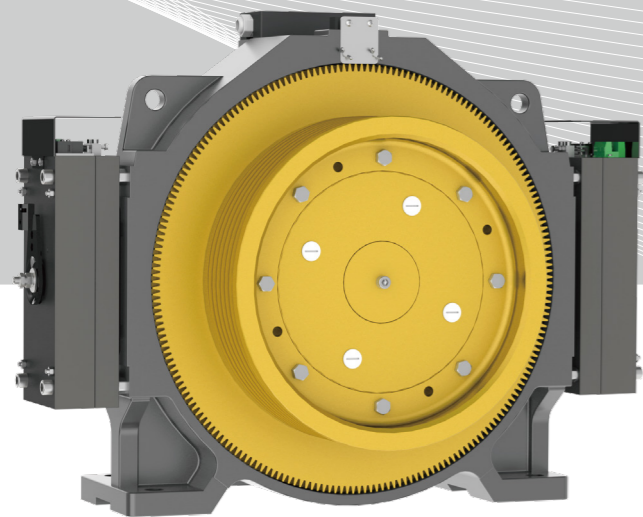


SPEC.SHEET

Type	MCK200												
Spec.	Load	Elv. Speed	Sheave Diam.	Sheave Groove	Current	Power	Speed	Freq.	Torque	Poles	L	L1	β Angle ^{*3}
	kg	m/s	mm		A	kW	r/min	Hz	N·m		mm	mm	°
Roping 1:1													
550-1.0	550	1.0	400	6×Φ10×15	11	3.5	48	12.8	700	32	272	75.5	95
550-1.6	550	1.6		6×Φ10×15	15	5.6	76	20.3	700	32			
630-1.0	630	1.0	400	6×Φ10×15	13	4.0	48	12.8	800	32	272	75.5	
630-1.6	630	1.6		6×Φ10×15	17	6.4	76	20.3	800	32			
Roping 2:1													
630-1.0	630	1.0	400	4×Φ10×15	10	4.2	95	25.3	420	32	260	69.5	95
630-1.6	630	1.6		4×Φ10×15	16	6.7	153	40.8	420	32			
630-2.0	630	2.0	4×Φ10×15	18	8.4	191	50.9	420	32				
800-1.0	800	1.0	400	5×Φ10×15	12	5.2	95	25.3	520	32	260	69.5	
800-1.6	800	1.6		5×Φ10×15	20	8.3	153	40.8	520	32			
800-2.0	800	2.0		5×Φ10×15	23	10.4	191	50.9	520	32			
800-2.5	800	2.5		6×Φ10×15	28	13.0	239	63.7	520	32			
1000-1.0A	1000	1.0	400	5×Φ10×15	15	6.5	95	25.3	650	32	260	69.5	
1000-1.6A	1000	1.6		5×Φ10×15	26	10.4	153	40.8	650	32			
1000-2.0A	1000	2.0		5×Φ10×15	28	13.0	191	50.9	650	32			
1000-2.5A	1000	2.5		6×Φ10×15	34	16.3	239	63.7	650	32			
1150-1.0A	1150	1.0	400	5×Φ10×15	17	7.5	95	25.3	750	32	260	69.5	
1150-1.6A	1150	1.6		6×Φ10×15	29	12.0	153	40.8	750	32			
1150-2.0A	1150	2.0		6×Φ10×15	33	15.0	191	50.9	750	32			
1250-1.0	1250	1.0	400	6×Φ10×15	20	8.0	95	25.3	800	32	272	75.5	
1250-1.6	1250	1.6		6×Φ10×15	30	12.8	153	40.8	800	32			
1250-2.0	1250	2.0		6×Φ10×15	38	16.0	191	50.9	800	32			
1000-1.0B	1000	1.0	450	5×Φ10×15	15	6.5	85	22.7	730	32	260	69.5	
1000-1.6B	1000	1.6		5×Φ10×15	25	10.4	136	36.3	730	32			
1000-2.0B	1000	2.0		5×Φ10×15	28	13.0	170	45.3	730	32			
1000-2.5B	1000	2.5		6×Φ10×15	36	16.2	212	56.5	730	32			
1150-1.0B	1150	1.0	450	5×Φ10×15	18	7.1	85	22.7	800	32	260	69.5	
1150-1.6B	1150	1.6		6×Φ10×15	30	11.4	136	36.3	800	32			

• Notes:

- ☞ *1. The machine can also be used for machine roomless.
- ☞ *2. Rear handwheel is applicable for this model.
- ☞ *3. The undercut angle is recommended value.
- ☞ 1) Undercut angle can be customized according to practical requirements.
- ☞ 2) Elv. speed>1.0m/s in machine room, can increase undercut angle appropriately.

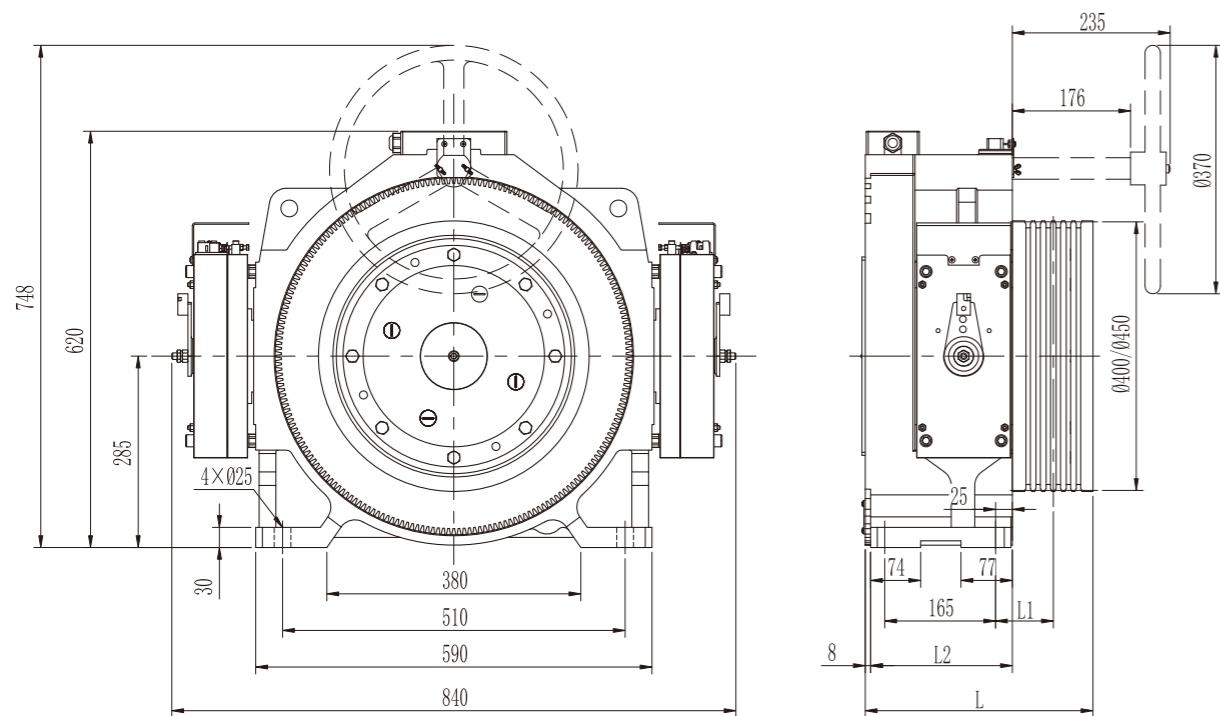


MCK300 E

PMS GEARLESS TRACTION MACHINE

• Voltage	380V	• Roping	1:1 / 2:1
• Load	(1250~1600)kg	• Elv. Speed	(1.0~2.5)m/s
• Sheave Diam.	Φ400mm/Φ450mm	• Duty / Starts Per Hour	S5-40% / 240st/h
• Shell Protection Grade	IP41	• Ins. Grade	F
• Max. Axle Load	6000kg	• Weight	450kg
☉ Brake Type	EMK12K	Voltage / Current	DC110V / 2×1.6A (Standard) DC207V / 2×1.3A (Optional)

DIMENSIONS



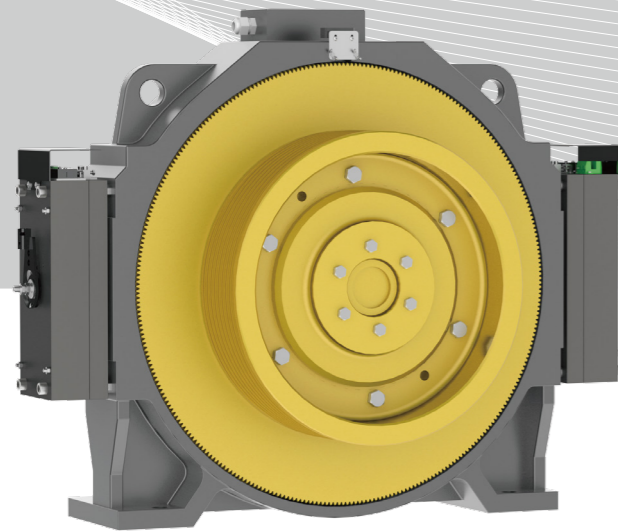
SPEC.SHEET



Type	MCK300															
Spec.	Load	Elv. Speed	Sheave Diam.	Sheave Groove	Current	Power	Speed	Freq.	Torque	Poles	L	L1	L2	β Angle ³		
	kg	m/s	mm		A	kW	r/min	Hz	N·m		mm	mm	mm	°		
Roping 1:1																
630-1.0A	630	1.0	400	6×Φ10×15	13	4.0	48	12.8	800	32	345	86	211	95		
630-1.6A	630	1.6		6×Φ10×15	17	6.4	76	20.3	800	32						
800-1.0A	800	1.0	400	7×Φ10×15	17	5.2	48	12.8	1040	32	345	86	211			
800-1.6A	800	1.6		7×Φ10×15	25	9.1	84	22.4	1040	32						
630-1.0B	630	1.0	450	6×Φ10×15	14	4.0	42	11.2	900	32	345	86	211			
630-1.6B	630	1.6		6×Φ10×15	19	7.0	74	19.7	900	32						
800-1.0B	800	1.0	450	7×Φ10×15	16	5.1	42	11.2	1170	32	345	86	211			
800-2.0B	800	2.0		7×Φ10×15	24	10.4	85	22.7	1170	32						
Roping 2:1																
1250-1.0	1250	1.0	400	6×Φ10×15	20	8.0	95	25.3	800	32	345	86	211			
1250-1.6	1250	1.6		6×Φ10×15	30	12.8	153	40.8	800	32						
1250-2.0	1250	2.0		6×Φ10×15	38	16.0	191	50.9	800	32						
1350-1.0A	1350	1.0	400	7×Φ10×15	21	8.6	95	25.3	860	32	345	86	211			
1350-1.6A	1350	1.6		7×Φ10×15	35	13.8	153	40.8	860	32						
1350-2.0A	1350	2.0		7×Φ10×15	40	17.2	191	50.9	860	32						
1600-1.0A	1600	1.0	400	7×Φ10×15	24	10.3	95	25.3	1040	32	345	86	211			
1600-1.6A	1600	1.6		8×Φ10×15	40	16.7	153	40.8	1040	32						
1600-2.0A	1600	2.0		8×Φ10×15	45	20.8	191	50.9	1040	32						
1600-2.5A	1600	2.5		8×Φ10×15	55	26.0	239	63.7	1040	32	360	93.5	211			
1350-1.0B	1350	1.0	450	7×Φ10×15	22	8.6	85	22.7	970	32				345	86	211
1350-1.6B	1350	1.6		7×Φ10×15	35	13.8	136	36.3	970	32						
1350-2.0B	1350	2.0		7×Φ10×15	38	17.3	170	45.3	970	32						
1350-2.5B	1350	2.5		7×Φ10×15	49	21.5	212	56.5	970	32	372	91	233			
1600-1.0B	1600	1.0	450	7×Φ10×15	24	10.4	85	22.7	1170	32				372	91	233
1600-1.6B	1600	1.6		8×Φ10×15	40	16.7	136	36.3	1170	32						
1600-2.0B	1600	2.0		8×Φ10×15	45	20.8	170	45.3	1170	32						
1600-2.5B	1600	2.5		8×Φ10×15	55	26.0	212	56.5	1170	32						

Notes:

- *1. The machine can also be used for machine roomless.
- *2. Rear handwheel is applicable for this model.
- *3. The undercut angle is recommended value.
- 1) Undercut angle can be customized according to practical requirements.
- 2) Elv. speed>1.0m/s in machine room, can increase undercut angle appropriately.

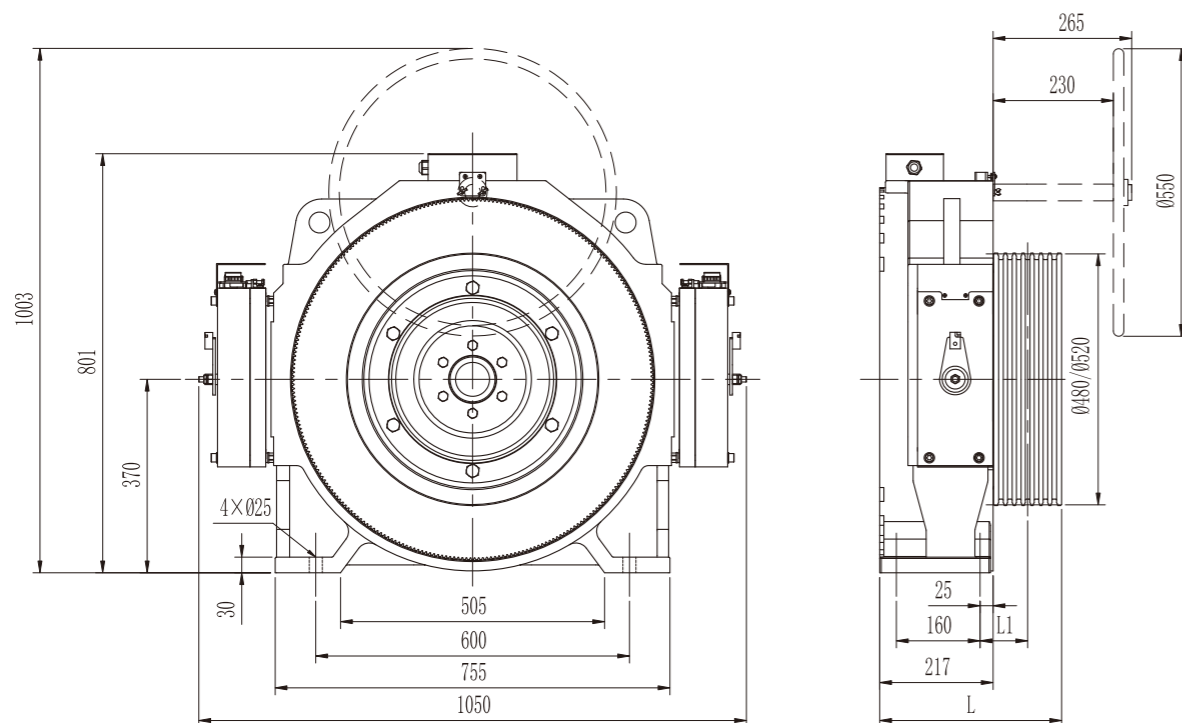


MCK500 ^E

PMS GEARLESS TRACTION MACHINE

• Voltage	380V	• Roping	1:1 / 2:1
• Load	(1600~2500)kg	• Elv. Speed	(1.0~2.5)m/s
• Sheave Diam.	Φ480mm/Φ520mm	• Duty / Starts Per Hour	S5-40% / 240st/h
• Shell Protection Grade	IP41	• Ins. Grade	F
• Max. Axle Load	10000kg	• Weight	740kg
☉ Brake Type	EMK18K	Voltage / Current	DC110V / 2×2.6A (Standard) DC207V / 2×1.8A (Optional)

DIMENSIONS



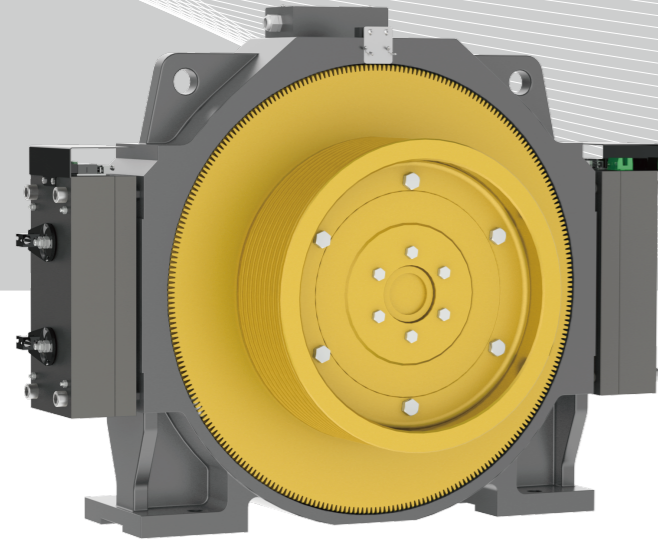
SPEC. SHEET



Type	MCK500												
Spec.	Load	Elv. Speed	Sheave Diam.	Sheave Groove	Current	Power	Speed	Freq.	Torque	Poles	L	L1	β Angle ^{*3}
	kg	m/s	mm		A	kW	r/min	Hz	N·m		mm	mm	°
Roping 1:1													
800-1.0	800	1.0	480	6×Φ12×17	18	5.2	40	13.3	1250	40	350	91	95
800-2.0	800	2.0		6×Φ12×17	25	10.5	80	26.7	1250	40			
1000-1.0	1000	1.0	480	7×Φ12×17	23	6.5	40	13.3	1560	40	350	91	
1000-2.0	1000	2.0		7×Φ12×17	30	13.1	80	26.7	1560	40			
800-1.0	800	1.0	520	6×Φ12×17	18	4.9	37	12.3	1270	40	350	91	
800-1.6	800	1.6		6×Φ12×17	24	7.8	59	19.7	1270	40			
800-2.0	800	2.0		6×Φ12×17	24	9.7	73	24.3	1270	40			
1000-1.0	1000	1.0		7×Φ12×17	23	6.2	37	12.3	1590	40			
1000-1.6	1000	1.6	520	7×Φ12×17	32	9.8	59	19.7	1590	40	350	91	
1000-2.0	1000	2.0		7×Φ12×17	32	12.2	73	24.3	1590	40			
Roping 2:1													
1600-1.0A	1600	1.0	480	6×Φ12×17	25	10.5	80	26.7	1250	40	350	91	
1600-1.6A	1600	1.6		6×Φ12×17	42	16.6	127	42.3	1250	40			
1600-2.0A	1600	2.0		6×Φ12×17	47	20.8	159	53.0	1250	40			
1600-2.5A	1600	2.5		6×Φ12×17	57	26.0	199	66.3	1250	40			
2000-1.0A	2000	1.0	480	7×Φ12×17	30	13.1	80	26.7	1560	40	350	91	
2000-1.6A	2000	1.6		7×Φ12×17	51	20.7	127	42.3	1560	40			
2000-2.0A	2000	2.0		7×Φ12×17	59	26.0	159	53.0	1560	40			
2000-2.5A	2000	2.5		8×Φ12×17	71	32.5	199	66.3	1560	40			
2500-1.0A	2500	1.0	480	8×Φ12×17	38	16.3	80	26.7	1950	40	365	98.5	
2500-1.6A	2500	1.6		8×Φ12×17	66	25.9	127	42.3	1950	40			
2500-2.0A	2500	2.0		8×Φ12×17	71	32.5	159	53.0	1950	40			
2500-2.5A	2500	2.5		9×Φ12×17	83	40.6	199	66.3	1950	40			

• Notes:

- ☞ *1. The machine can also be used for machine roomless.
- ☞ *2. Rear handwheel is applicable for this model.
- ☞ *3. The undercut angle is recommended value.
- ☞ 1) Undercut angle can be customized according to practical requirements.
- ☞ 2) Elv. speed>1.0m/s in machine room, can increase undercut angle appropriately.



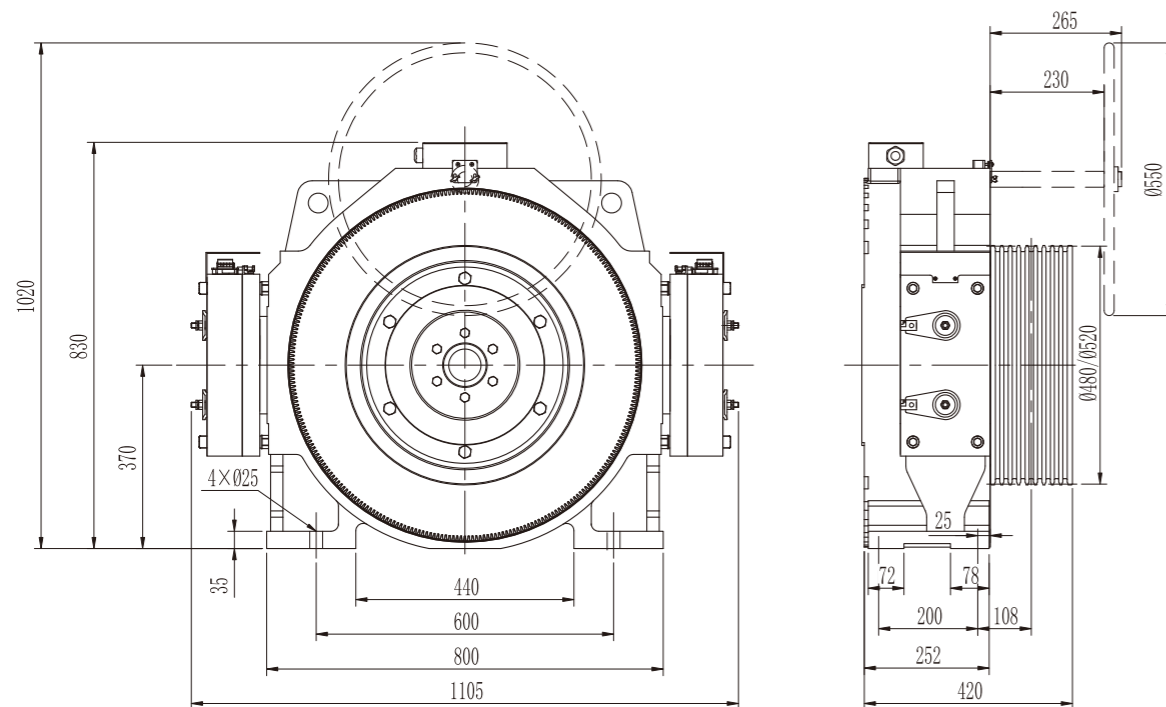
MCK500

PMS GEARLESS TRACTION MACHINE

• Voltage	380V	• Roping	2:1
• Load	3000kg	• Elv. Speed	(1.0~2.5)m/s
• Sheave Diam.	Φ480mm/Φ520mm	• Duty / Starts Per Hour	S5-40% / 240st/h
• Shell Protection Grade	IP41	• Ins. Grade	F
• Max. Axle Load	10000kg	• Weight	865kg

☉ Brake Type	EMK18K	Voltage / Current	DC110V / 2×3.0A (Standard)	DC207V / 2×1.7A (Optional)
--------------	--------	-------------------	----------------------------	----------------------------

DIMENSIONS



SPEC.SHEET



Type	MCK500										
Spec.	Load	Elv. Speed	Sheave Diam.	Sheave Groove	Current	Power	Speed	Freq.	Torque	Poles	β Angle
	kg	m/s	mm		A	kW	r/min	Hz	N·m		°
3000-1.0A	3000	1.0	480	8×Φ12×17	46	19.6	80	26.7	2340	40	95
3000-1.6A	3000	1.6		8×Φ12×17	78	31.1	127	42.3	2340	40	
3000-2.0A	3000	2.0		9×Φ12×17	83	39.0	159	53.0	2340	40	
3000-2.5A	3000	2.5		9×Φ12×17	108	48.8	199	66.3	2340	40	
3000-1.0B	3000	1.0	520	8×Φ13×18	43	18.2	73	24.3	2380	40	
3000-1.6B	3000	1.6		8×Φ13×18	75	29.4	118	39.3	2380	40	
3000-2.0B	3000	2.0		8×Φ13×18	82	36.6	147	49.0	2380	40	
3000-2.5B	3000	2.5		8×Φ13×18	106	45.9	184	61.3	2380	40	

• Notes:

- ✎ *1、 The machine can also be used for machine roomless.
- ✎ *2、 Rear handwheel is applicable for this model.
- ✎ *3、 The undercut angle is recommended value.
- 📄 1) Undercut angle can be customized according to practical requirements.
- 📄 2) Elv. speed>1.0m/s in machine room, can increase undercut angle appropriately.

MONADRIVE®

MONA

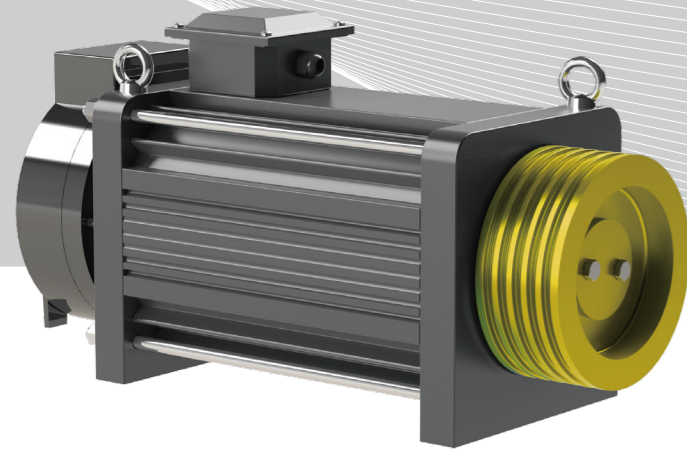
PMS GEARLESS TRACTION MACHINE



MONADRIVE®

MONA SERIES INCLUDES

- Load (320~630)kg
Speed(0.4~1.0)m/s MONA120 ●
- Load(400~630)kg
Speed(1.0~1.6)m/s MONA180 ●
- Load(400~800)kg
Speed(1.0~1.6)m/s MONA200 ●
- Load(400~800)kg
Speed(1.0~1.6)m/s MONA200A ●
- Load(630~1275)kg
Speed(1.0~1.75)m/s MONA320 ●



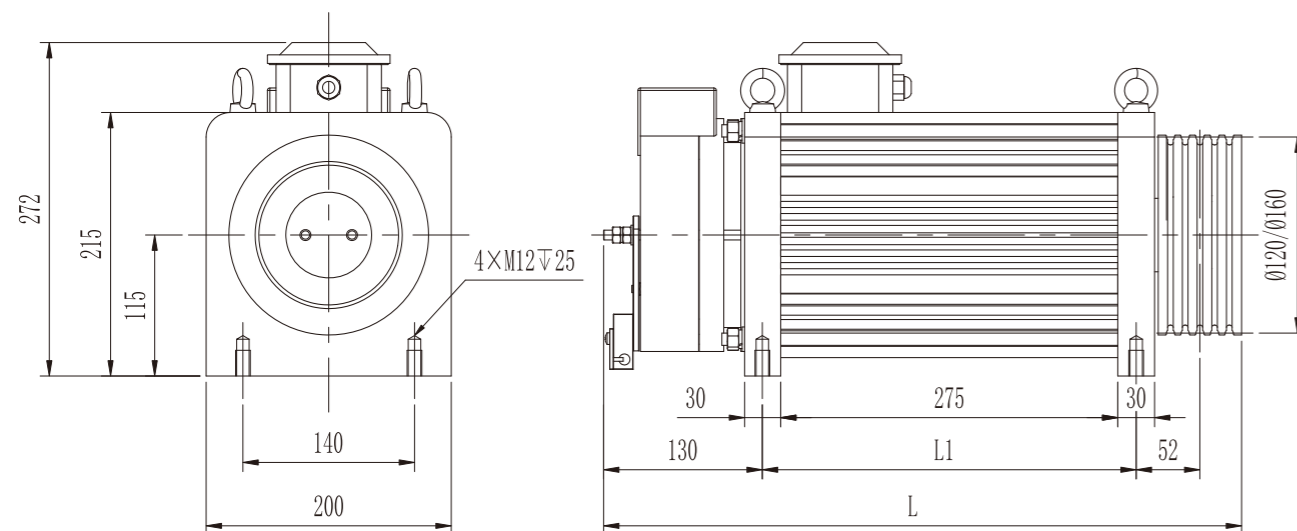
MONA120

PMS GEARLESS TRACTION MACHINE

• Voltage	220V / 380V	• Roping	2:1
• Load	(320~630)kg	• Elv. Speed	(0.4~1.0)m/s
• Sheave Diam.	Φ120mm/Φ160mm	• Duty / Starts Per Hour	S5-25% / 180st/h
• Shell Protection Grade	IP41	• Ins. Grade	F
• Max. Axle Load	2000kg	• Weight	80kg
• Brake Type	EMM600	Voltage / Current	DC110V / 1.54A (Standard) DC207V / 0.95A (Optional)

• Notes : The machine can only be equipped with single coil brake.

DIMENSIONS



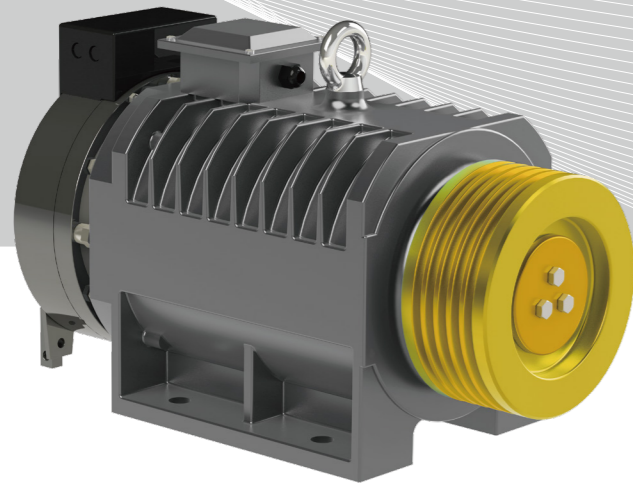
SPEC.SHEET

Type	MONA120													β Angle ^{*2}
Spec.	Load	Elv. Speed	Sheave Diam.	Sheave Groove	Voltage	Current	Power	Speed	Freq.	Torque	Poles	L	L1	β Angle ^{*2}
	kg	m/s	mm		V	A	kW	r/min	Hz	N-m		mm	mm	°
320-0.4A	320	0.4	120	3×Φ6.5×12	220 / 380	6 / 4	0.9	127	16.9	65	16	451	245	90
320-0.5A	320	0.5		3×Φ6.5×12	220 / 380	6 / 4	1.1	159	21.2	65	16			
320-0.63A	320	0.63		3×Φ6.5×12	220 / 380	6 / 4	1.4	201	26.8	65	16			
320-1.0A	320	1.0		3×Φ6.5×12	220 / 380	9 / 6	2.2	318	42.4	65	16			
400-0.4A	400	0.4	120	3×Φ6.5×12	220 / 380	7 / 4	1.1	127	16.9	80	16	451	245	
400-0.5A	400	0.5		3×Φ6.5×12	220 / 380	7 / 5	1.3	159	21.2	80	16			
400-0.63A	400	0.63		3×Φ6.5×12	220 / 380	7 / 5	1.8	201	26.8	80	16			
400-1.0A	400	1.0		3×Φ6.5×12	220 / 380	11 / 7	2.7	318	42.4	80	16			
450-0.4A	450	0.4	120	3×Φ6.5×12	220 / 380	8 / 5	1.2	127	16.9	90	16	511	305	
450-0.5A	450	0.5		3×Φ6.5×12	220 / 380	8 / 6	1.6	159	21.2	90	16			
450-0.63A	450	0.63		3×Φ6.5×12	220 / 380	8 / 6	2.0	201	26.8	90	16			
450-1.0A	450	1.0		3×Φ6.5×12	220 / 380	13 / 8	3.1	318	42.4	90	16			
630-0.4A	630	0.4	120	4×Φ6.5×12	220 / 380	11 / 7	1.7	127	16.9	125	16	511	305	
630-0.5A	630	0.5		4×Φ6.5×12	220 / 380	11 / 7	2.1	159	21.2	125	16			
630-0.63A	630	0.63		4×Φ6.5×12	220 / 380	11 / 7	2.7	201	26.8	125	16			
630-1.0A	630	1.0		4×Φ6.5×12	220 / 380	18 / 11	4.2	318	42.4	125	16			
320-0.4B	320	0.4	160	4×Φ6×12	220 / 380	6 / 4	0.9	95	12.6	85	16	451	245	
320-0.5B	320	0.5		4×Φ6×12	220 / 380	6 / 4	1.1	119	15.9	85	16			
320-0.63B	320	0.63		4×Φ6×12	220 / 380	6 / 4	1.4	150	20.0	85	16			
320-1.0B	320	1.0		4×Φ6×12	220 / 380	9 / 6	2.2	239	31.9	85	16			
400-0.4B	400	0.4	160	5×Φ6×12	220 / 380	7 / 4	1.1	95	12.6	106	16	511	305	
400-0.5B	400	0.5		5×Φ6×12	220 / 380	7 / 5	1.3	119	15.9	106	16			
400-0.63B	400	0.63		5×Φ6×12	220 / 380	7 / 5	1.8	150	20.0	106	16			
400-1.0B	400	1.0		5×Φ6×12	220 / 380	11 / 7	2.7	239	31.9	106	16			
450-0.4B	450	0.4	160	5×Φ6×12	220 / 380	8 / 5	1.2	95	12.6	120	16	511	305	
450-0.5B	450	0.5		5×Φ6×12	220 / 380	8 / 6	1.6	119	15.9	120	16			
450-0.63B	450	0.63		5×Φ6×12	220 / 380	8 / 6	2.0	150	20.0	120	16			
450-1.0B	450	1.0		5×Φ6×12	220 / 380	13 / 8	3.1	239	31.9	120	16			

• Notes:

• *1、 The machine is only used for machine roomless.

• *2、 The undercut angle is recommended value, and it's optional according to practical condition.



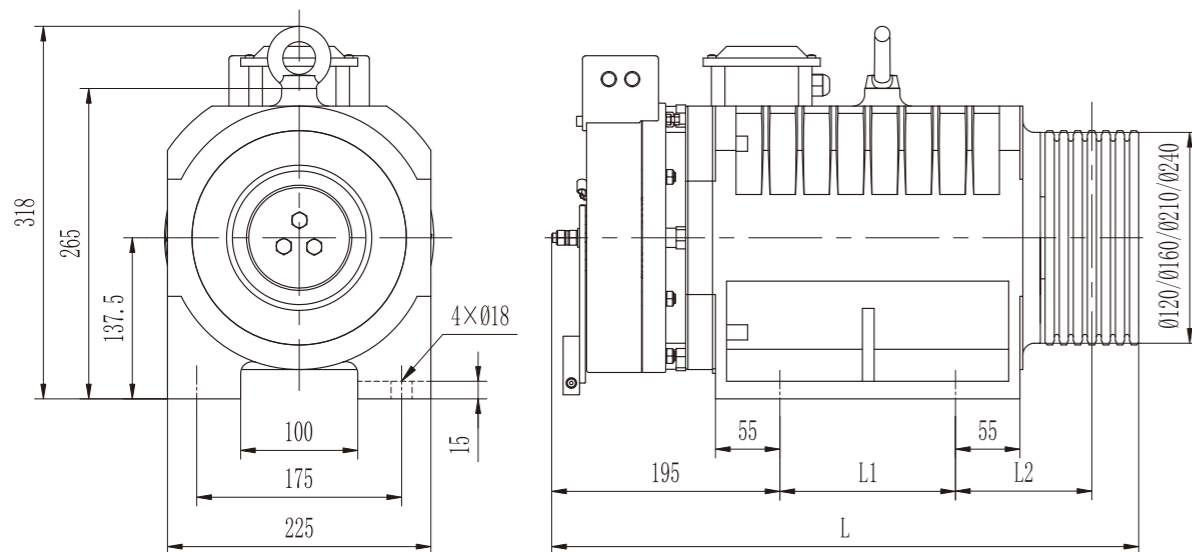
MONA180

PMS GEARLESS TRACTION MACHINE

• Voltage	220V / 380V	• Roping	2:1
• Load	(400~630)kg	• Elv. Speed	(1.0~1.6)m/s
• Sheave Diam.	(Φ120/Φ160/Φ210/Φ240)mm	• Duty / Starts Per Hour	S5-40% / 180st/h
• Shell Protection Grade	IP41	• Ins. Grade	F
• Max. Axle Load	2500kg	• Weight	118kg
• Brake Type	EMM600	Voltage / Current	DC110V / 2×0.86A (Standard) DC207V / 2×0.43A (Optional)

• Notes : The machine can be equipped with single coil brake. (DC110V/2A & DC207V/1.2A)

DIMENSIONS



SPEC.SHEET



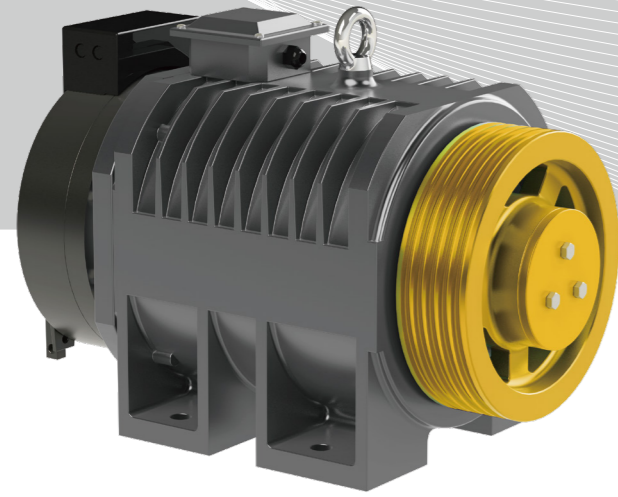
Type	MONA180														
Spec.	Load	Elv. Speed	Sheave Diam.	Sheave Groove	Voltage	Current	Power	Speed	Freq.	Torque	Poles	L	L1	L2	β Angle
	kg	m/s	mm		V	A	kW	r/min	Hz	N·m		mm	mm	mm	°
400-1.0A	400	1.0	120	5×Φ6.5×12	220 / 380	10 / 6	2.5	318	42.4	75	16	525	150	126.5	90
400-1.6A	400	1.6		5×Φ6.5×12	220 / 380	16 / 10	4.0	509	67.9	75	16				
450-1.0A	450	1.0	120	5×Φ6.5×12	220 / 380	12 / 7	2.8	318	42.4	85	16	525	150	126.5	
450-1.6A	450	1.6		5×Φ6.5×12	220 / 380	18 / 12	4.5	509	67.9	85	16				
630-1.0A	630	1.0	120	6×Φ6.5×12	220 / 380	16 / 10	4.0	318	42.4	120	16	525	150	126.5	
630-1.6A	630	1.6		6×Φ6.5×12	220 / 380	24 / 16	6.4	509	67.9	120	16				
400-1.0B	400	1.0	160	5×Φ6.5×12	220 / 380	10 / 6	2.5	239	31.9	100	16	525	150	126.5	
400-1.6B	400	1.6		5×Φ6.5×12	220 / 380	18 / 10	4.0	382	50.9	100	16				
450-1.0B	450	1.0	160	5×Φ6.5×12	220 / 380	11 / 7	2.8	239	31.9	110	16	525	150	126.5	
450-1.6B	450	1.6		5×Φ6.5×12	220 / 380	19 / 11	4.4	382	50.9	110	16				
630-1.0B	630	1.0	160	6×Φ6.5×12	220 / 380	16 / 10	4.0	239	31.9	160	16	525	150	126.5	
630-1.6B	630	1.6		6×Φ6.5×12	220 / 380	27 / 16	6.4	382	50.9	160	16				
400-1.0C	400	1.0	210	5×Φ6.5×12	220 / 380	10 / 6	2.5	182	24.3	130	16	525	150	126.5	
400-1.6C	400	1.6		5×Φ6.5×12	220 / 380	18 / 10	4.0	291	38.8	130	16				
450-1.0C	450	1.0	210	5×Φ6.5×12	220 / 380	12 / 7	2.9	182	24.3	150	16	525	150	126.5	
450-1.6C	450	1.6		5×Φ6.5×12	220 / 380	20 / 12	4.6	291	38.8	150	16				
630-1.0C	630	1.0	210	6×Φ6.5×12	220 / 380	15 / 10	4.0	182	24.3	210	16	595	220	126.5	
630-1.6C	630	1.6		6×Φ6.5×12	220 / 380	26 / 15	6.4	291	38.8	210	16				
400-1.0D	400	1.0	240	5×Φ6.5×12	220 / 380	11 / 7	2.5	159	21.2	150	16	525	150	126.5	
400-1.6D	400	1.6		5×Φ6.5×12	220 / 380	20 / 11	4.0	255	34.0	150	16				
450-1.0D	450	1.0	240	5×Φ6.5×12	220 / 380	12 / 8	2.8	159	21.2	170	16	595	220	126.5	
450-1.6D	450	1.6		5×Φ6.5×12	220 / 380	21 / 12	4.5	255	34.0	170	16				

• Notes:

*1. The machine is only used for machine roomless.

*2. Facing the brake, junction box can be located on the left, right optionally.

*3. The undercut angle is recommended value, and it's optional according to practical condition.



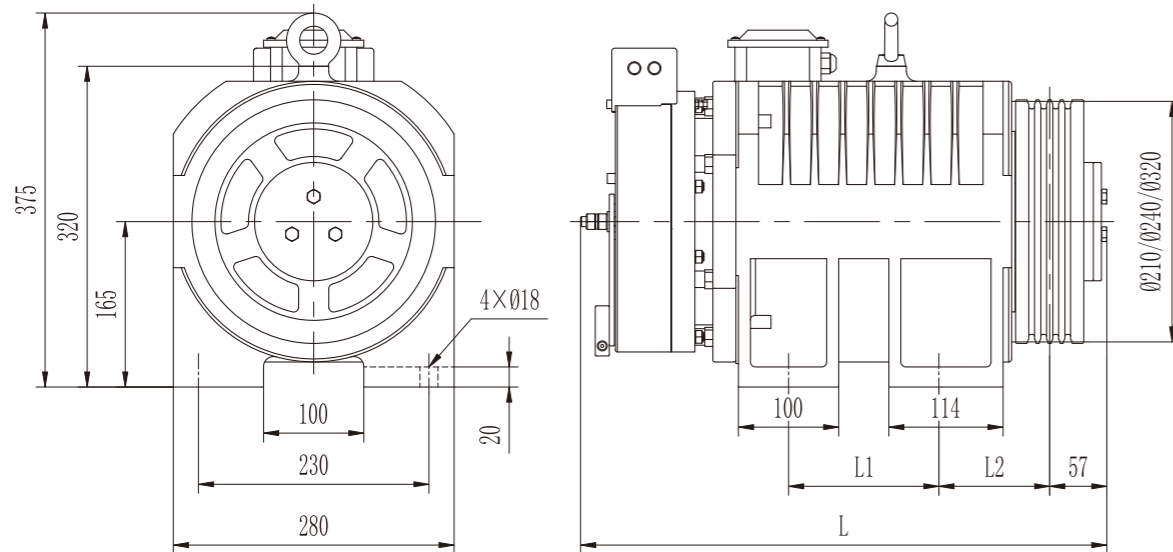
MONA200

PMS GEARLESS TRACTION MACHINE

• Voltage	220V / 380V	• Roping	2:1
• Load	(400~800)kg	• Elv. Speed	(1.0~1.6)m/s
• Sheave Diam.	(Φ210/Φ240/Φ320)mm	• Duty / Starts Per Hour	S5-40% / 180st/h
• Shell Protection Grade	IP41	• Ins. Grade	F
• Max. Axle Load	2500kg	• Weight	180kg
☉ Brake Type	EMM600	Voltage / Current	DC110V / 2×1.2A (Standard) DC207V / 2×0.71A (Optional)

• Notes : The machine can be equipped with single coil brake. (DC110V/2A & DC207V/1.2A)

DIMENSIONS



SPEC.SHEET



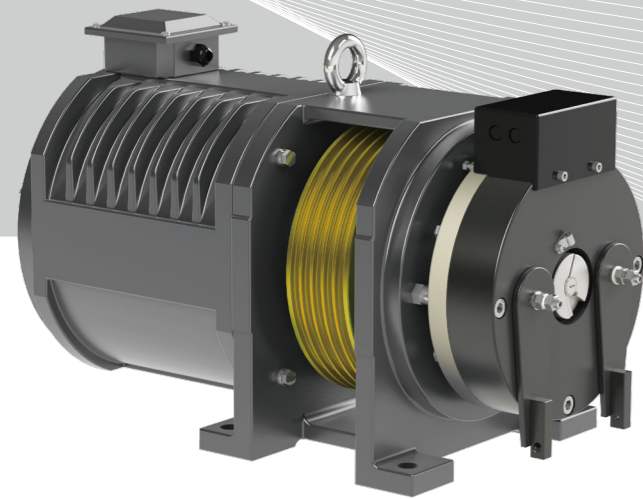
Type	MONA200														
Spec.	Load	Elv. Speed	Sheave Diam.	Sheave Groove	Voltage	Current	Power	Speed	Freq.	Torque	Poles	L	L1	L2	β Angle
	kg	m/s	mm		V	A	kW	r/min	Hz	N·m		mm	mm	mm	°
400-1.0A	400	1.0	210	5×Φ6.5×12	220 / 380	12 / 7	2.5	182	24.3	130	16	462	100	116.5	90
400-1.6A	400	1.6		5×Φ6.5×12	220 / 380	18 / 12	4.0	291	38.8	130	16				
450-1.0A	450	1.0	210	6×Φ6.5×12	220 / 380	12 / 8	2.9	182	24.3	150	16	462	100	116.5	
450-1.6A	450	1.6		6×Φ6.5×12	220 / 380	20 / 12	4.6	291	38.8	150	16				
630-1.0A	630	1.0	210	7×Φ6.5×12	220 / 380	18 / 10	4.0	182	24.3	210	16	552	150	126.5	
630-1.6A	630	1.6		7×Φ6.5×12	220 / 380	27 / 18	6.4	291	38.8	210	16				
800-1.0A	800	1.0	210	8×Φ6.5×12	220 / 380	20 / 13	5.1	182	24.3	270	16	552	150	126.5	
800-1.6A	800	1.6		8×Φ6.5×12	220 / 380	34 / 20	8.2	291	38.8	270	16				
400-1.0B	400	1.0	240	5×Φ6.5×12	220 / 380	12 / 7	2.5	159	21.2	150	16	462	100	116.5	
400-1.6B	400	1.6		5×Φ6.5×12	220 / 380	17 / 12	4.0	255	34.0	150	16				
450-1.0B	450	1.0	240	6×Φ6.5×12	220 / 380	13 / 8	2.8	159	21.2	170	16	462	100	116.5	
450-1.6B	450	1.6		6×Φ6.5×12	220 / 380	19 / 13	4.5	255	34.0	170	16				
630-1.0B	630	1.0	240	7×Φ6.5×12	220 / 380	16 / 10	4.0	159	21.2	240	16	552	150	126.5	
630-1.6B	630	1.6		7×Φ6.5×12	220 / 380	28 / 16	6.4	255	34.0	240	16				
800-1.0B	800	1.0	240	8×Φ6.5×12	220 / 380	20 / 12	5.2	159	21.2	310	16	602	200	126.5	
800-1.6B	800	1.6		8×Φ6.5×12	220 / 380	32 / 20	8.3	255	34.0	310	16				
400-1.0C	400	1.0	320	4×Φ8×12	220 / 380	10 / 6	2.5	119	15.9	200	16	520	150	110.5	
400-1.6C	400	1.6		4×Φ8×12	220 / 380	18 / 10	4.0	191	25.5	200	16				
450-1.0C	450	1.0	320	4×Φ8×12	220 / 380	11 / 7	2.9	119	15.9	230	16	520	150	110.5	
450-1.6C	450	1.6		4×Φ8×12	220 / 380	19 / 11	4.6	191	25.5	230	16				
630-1.0C	630	1.0	320	5×Φ8×12	220 / 380	16 / 10	4.0	119	15.9	320	16	570	200	110.5	
630-1.6C	630	1.6		5×Φ8×12	220 / 380	27 / 16	6.4	191	25.5	320	16				

• Notes:

☞ *1. The machine is only used for machine roomless.

☞ *2. Facing the brake, junction box can be located on the left, right optionally.

☞ *3. The undercut angle is recommended value, and it's optional according to practical condition.



MONA200A

PMS GEARLESS TRACTION MACHINE

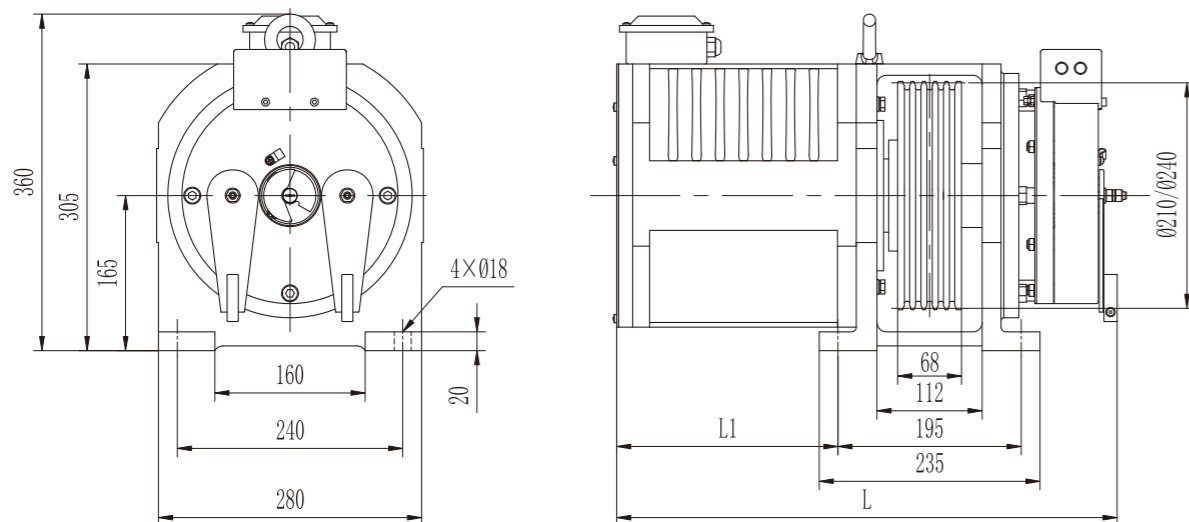
• Voltage	220V / 380V
• Load	(400~800)kg
• Sheave Diam.	Φ210mm/Φ240mm
• Shell Protection Grade	IP41
• Max. Axle Load	2500kg

• Roping	2:1
• Elv. Speed	(1.0~1.6)m/s
• Duty / Starts Per Hour	S5-40% / 180st/h
• Ins. Grade	F
• Weight	135kg

☉ Brake Type	EMM600	Voltage / Current	DC110V / 2×1.2A (Standard)	DC207V / 2×0.71A (Optional)
--------------	---------------	-------------------	----------------------------	-----------------------------

• Notes : The machine can be equipped with single coil brake. (DC110V/2A & DC207V/1.2A)

DIMENSIONS



SPEC.SHEET

Type	MONA200A													
Spec.	Load	Elv. Speed	Sheave Diam.	Sheave Groove	Voltage	Current	Power	Speed	Freq.	Torque	Poles	L	L1	β Angle
	kg	m/s	mm		V	A	kW	r/min	Hz	N·m		mm	mm	°
400-1.0A	400	1.0	210	5×Φ6.5×12	220 / 380	12 / 7	2.5	182	24.3	130	16	495	180	90
400-1.6A	400	1.6		5×Φ6.5×12	220 / 380	18 / 12	4.0	291	38.8	130	16			
450-1.0A	450	1.0	210	6×Φ6.5×12	220 / 380	12 / 8	2.9	182	24.3	150	16	495	180	
450-1.6A	450	1.6		6×Φ6.5×12	220 / 380	20 / 12	4.6	291	38.8	150	16			
630-1.0A	630	1.0	210	7×Φ6.5×12	220 / 380	18 / 10	4.0	182	24.3	210	16	560	240	
630-1.6A	630	1.6		7×Φ6.5×12	220 / 380	27 / 18	6.4	291	38.8	210	16			
800-1.0A	800	1.0	210	8×Φ6.5×12	220 / 380	20 / 13	5.1	182	24.3	270	16	560	240	
800-1.6A	800	1.6		8×Φ6.5×12	220 / 380	34 / 20	8.2	291	38.8	270	16			
400-1.0B	400	1.0	240	5×Φ6.5×12	220 / 380	12 / 7	2.5	159	21.2	150	16	495	180	
400-1.6B	400	1.6		5×Φ6.5×12	220 / 380	17 / 12	4.0	255	34.0	150	16			
450-1.0B	450	1.0	240	6×Φ6.5×12	220 / 380	13 / 8	2.8	159	21.2	170	16	495	180	
450-1.6B	450	1.6		6×Φ6.5×12	220 / 380	19 / 13	4.5	255	34.0	170	16			
630-1.0B	630	1.0	240	7×Φ6.5×12	220 / 380	16 / 10	4.0	159	21.2	240	16	560	240	
630-1.6B	630	1.6		7×Φ6.5×12	220 / 380	28 / 16	6.4	255	34.0	240	16			

• Notes:

- ✎ *1、 The machine is only used for machine roomless.
- ✎ *2、 Facing the brake, junction box can be located on the left, right optionally.
- ✎ *3、 The undercut angle is recommended value, and it's optional according to practical condition.

MGD SERIES INCLUDES

- Load (320~450) kg
Speed (0.4~1.0) m/s

MGD87 ●
- Load (320~630) kg
Speed (0.4~1.0) m/s

MGD100 ●
- Load (320~450) kg
Speed (0.4~1.0) m/s

MGD100B ●
- Load (320~450) kg
Speed (0.3~1.0) m/s

MGD100N₂ ●
- Load (320~630) kg
Speed (0.3~1.0) m/s

MGD100N₃ ●
- Load (320~630) kg
Speed (0.3~1.0) m/s

MGD100N₅ ●
- Load (450~800) kg
Speed (0.5~1.75) m/s

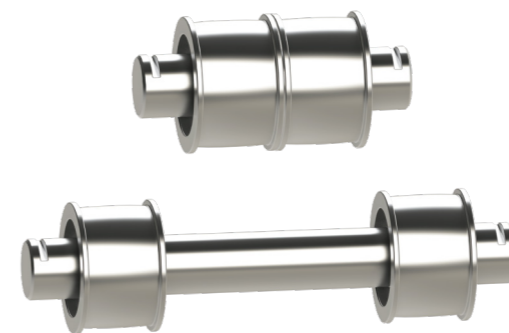
MGD100K₃ ●
- Load (800~1150) kg
Speed (1.0~2.0) m/s

MGD100K₄ ●
- Load (1250~1350) kg
Speed (1.0~2.0) m/s

MGD100K₆ ●
- Load (1350~2000) kg
Speed (1.0~2.5) m/s

MGD120 ●

OPTIONAL ACCESSORIES



GUIDE WHEEL



STEEL BELT



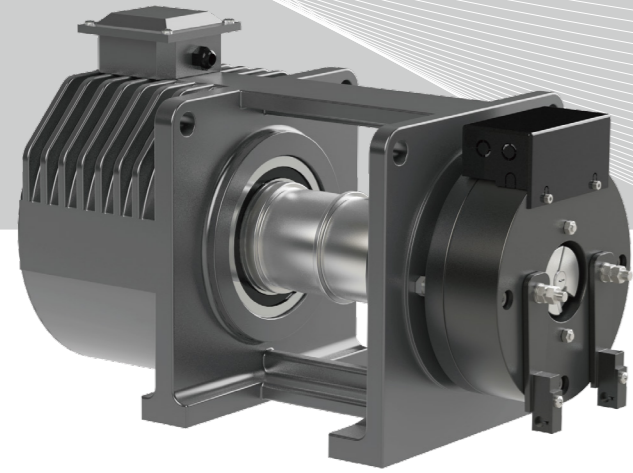
BROKEN TAPE DETECTION ASSEMBLY



ROPE HEAD ASSEMBLY

MONADRIVE®
MGD

PMS GEARLESS BELT TRACTION MACHINE



MGD87

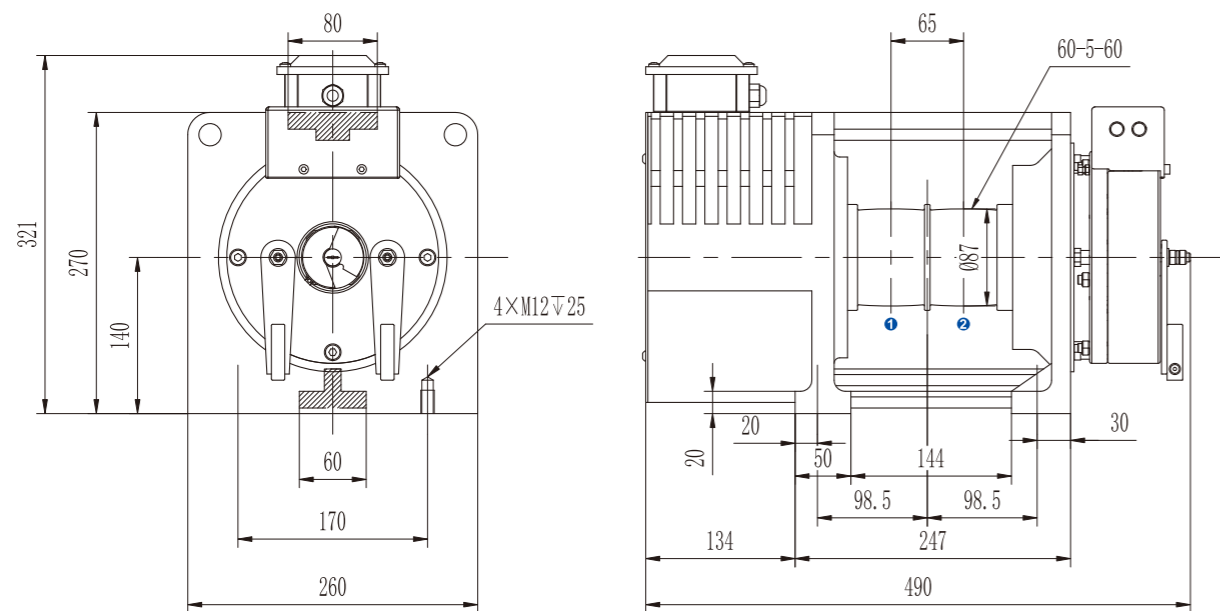
PMS GEARLESS BELT TRACTION MACHINE

• Voltage	220V / 380V	• Roping	2:1
• Load	(320~450)kg	• Elv. Speed	(0.4~1.0)m/s
• Sheave Diam.	Φ87mm	• Duty / Starts Per Hour	S5-40% / 180st/h
• Shell Protection Grade	IP41	• Ins. Grade	F
• Max. Axle Load	2500kg	• Weight	90kg

Brake Type	EMM600	Voltage / Current	DC110V / 1.5A (Standard)	DC207V / 0.95A (Optional)
------------	--------	-------------------	--------------------------	---------------------------

• Notes : The machine can only be equipped with single coil brake.

DIMENSIONS



SPEC.SHEET

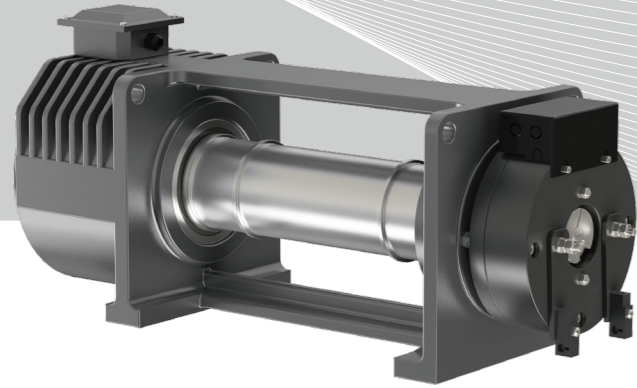


Type	MGD87										
Spec.	Load	Elv. Speed	Sheave Diam.	Groove	Voltage	Current	Power	Speed	Freq.	Torque	Poles
	kg	m/s	mm		V	A	kW	r/min	Hz	N·m	
320-0.4	320	0.4	87	2×60	220 / 380	4	1.0	176	23.5	55	16
320-0.5	320	0.5		2×60	220 / 380	7 / 4	1.3	220	29.3	55	16
320-0.63	320	0.63		2×60	220 / 380	7 / 4	1.6	277	36.9	55	16
320-1.0	320	1.0		2×60	220 / 380	10 / 7	2.5	439	58.5	55	16
400-0.4	400	0.4	87	2×60	220 / 380	5	1.2	176	23.5	65	16
400-0.5	400	0.5		2×60	220 / 380	8 / 5	1.5	220	29.3	65	16
400-0.63	400	0.63		2×60	220 / 380	8 / 5	1.9	277	36.9	65	16
400-1.0	400	1.0		2×60	220 / 380	12 / 8	3.0	439	58.5	65	16
450-0.4	450	0.4	87	2×60	220 / 380	6	1.4	176	23.5	75	16
450-0.5	450	0.5		2×60	220 / 380	9 / 6	1.7	220	29.3	75	16
450-0.63	450	0.63		2×60	220 / 380	9 / 6	2.2	277	36.9	75	16
450-1.0	450	1.0		2×60	220 / 380	14 / 9	3.4	439	58.5	75	16

• Notes:

✎ *1. The machine is only used for machine roomless.

✎ *2. Facing the brake, junction box can be located on the left, right or optionally.



MGD100

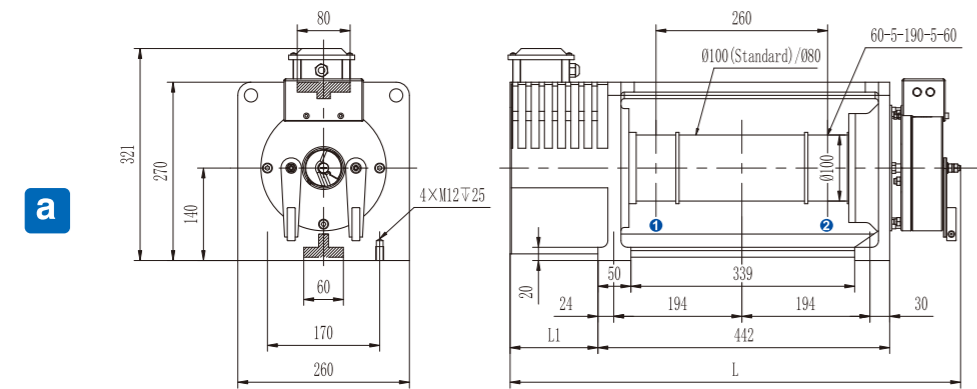
PMS GEARLESS BELT TRACTION MACHINE

• Voltage	220V / 380V	• Roping	1:1 / 2:1
• Load	(320~630)kg	• Elv. Speed	(0.4~1.0)m/s
• Sheave Diam.	Φ100mm	• Duty / Starts Per Hour	S5-40% / 180st/h
• Shell Protection Grade	IP41	• Ins. Grade	F
• Max. Axle Load	2500kg	• Weight	125kg

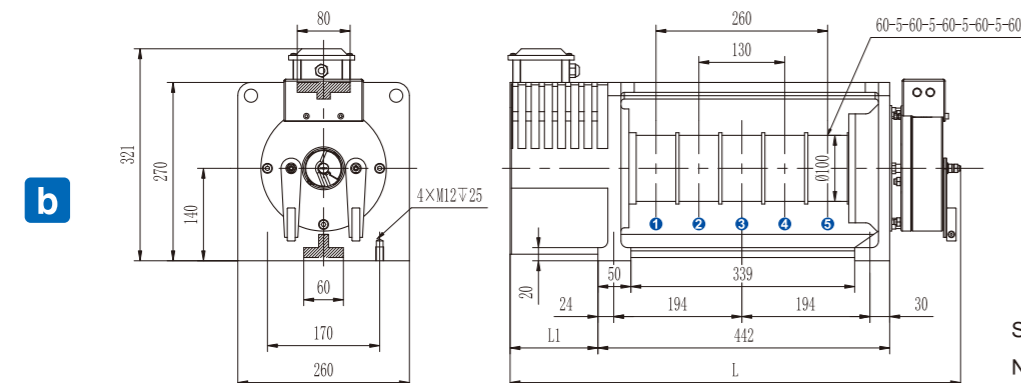
☉ Brake Type	EMM600	Voltage / Current	DC110V / 2×0.86A (Standard)	DC207V / 2×0.43A (Optional)
--------------	---------------	-------------------	-----------------------------	-----------------------------

• Notes : The machine can be equipped with single coil brake. (DC110V/1.54A & DC207V/0.95A)

DIMENSIONS



Slot pitch: 260mm
Number: 2



Slot pitch: 130mm
Number: 5

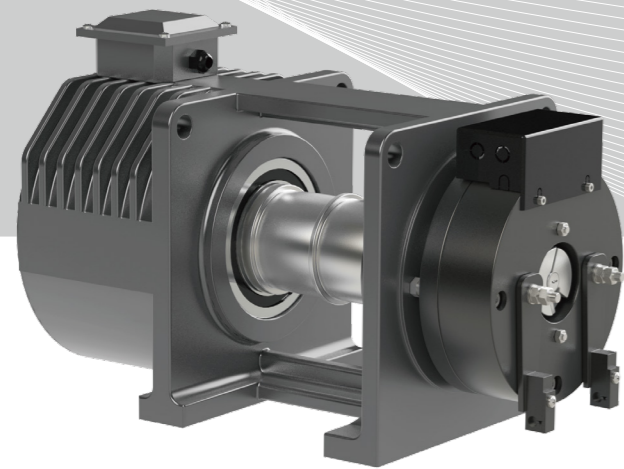
SPEC.SHEET



Type	MGD100												
Spec.	Load	Elv. Speed	Sheave Diam.	Groove	Voltage	Current	Power	Speed	Freq.	Torque	Poles	L	L1
	kg	m/s	mm		V	A	kW	r/min	Hz	N-m		mm	mm
Roping 2:1													
320-0.4	320	0.4	100	2×60	220 / 380	4	1.0	153	20.4	60	16	680	133
320-0.5	320	0.5		2×60	220 / 380	7 / 4	1.2	191	25.5	60	16		
320-0.63	320	0.63		2×60	220 / 380	7 / 4	1.5	241	32.1	60	16		
320-1.0	320	1.0		2×60	220 / 380	9 / 6	2.4	382	50.9	60	16		
400-0.4	400	0.4	100	2×60	220 / 380	5	1.2	153	20.4	75	16	680	133
400-0.5	400	0.5		2×60	220 / 380	8 / 5	1.5	191	25.5	75	16		
400-0.63	400	0.63		2×60	220 / 380	8 / 5	1.9	241	32.1	75	16		
400-1.0	400	1.0		2×60	220 / 380	12 / 8	3.0	382	50.9	75	16		
450-0.4	450	0.4	100	2×60	220 / 380	8 / 5	1.3	153	20.4	80	16	680	133
450-0.5	450	0.5		2×60	220 / 380	8 / 5	1.6	191	25.5	80	16		
450-0.63	450	0.63		2×60	220 / 380	8 / 5	2.0	241	32.1	80	16		
450-1.0	450	1.0		2×60	220 / 380	12 / 8	3.2	382	50.9	80	16		
630-0.4	630	0.4	100	3×60	220 / 380	11 / 7	1.8	153	20.4	110	16	725	178
630-0.5	630	0.5		3×60	220 / 380	11 / 7	2.2	191	25.5	110	16		
630-0.63	630	0.63		3×60	220 / 380	11 / 7	2.8	241	32.1	110	16		
630-1.0	630	1.0		3×60	220 / 380	16 / 11	4.4	382	50.9	110	16		
Roping 1:1													
320-0.3	320	0.3	100	2×60	220 / 380	6 / 4	0.7	57	7.6	110	16	725	178
320-0.4	320	0.4		2×60	220 / 380	6 / 4	0.9	76	10.1	110	16		
400-0.3	400	0.3	100	2×60	220 / 380	7 / 5	0.8	57	7.6	130	16	725	178
400-0.4	400	0.4		2×60	220 / 380	7 / 5	1.0	76	10.1	130	16		

• Notes:

- ✎ *1、 The machine is only used for machine roomless.
- ✎ *2、 Rated torque≥130Nm,brake current 2.0A(DC110V),brake current 1.2A(DC207V).
- ✎ *3、 Facing the brake, junction box can be located on the left, right or optionally.



MGD100B

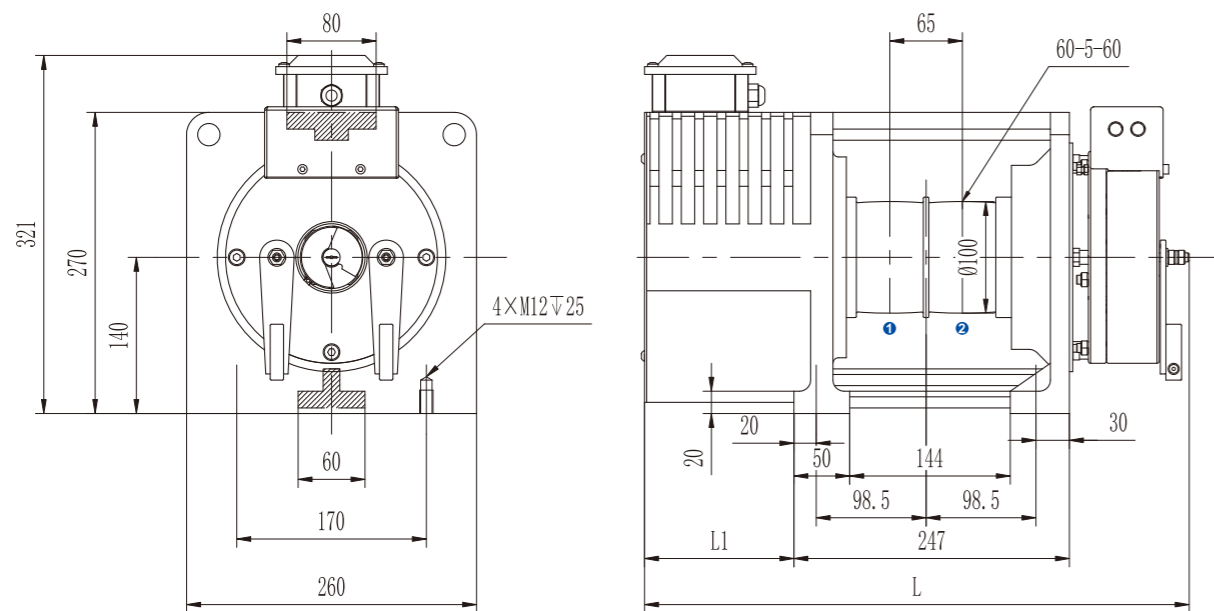
PMS GEARLESS BELT TRACTION MACHINE

• Voltage	220V / 380V	• Roping	1:1 / 2:1
• Load	(320~450)kg	• Elv. Speed	(0.4~1.0)m/s
• Sheave Diam.	Φ100mm	• Duty / Starts Per Hour	S5-40% / 180st/h
• Shell Protection Grade	IP41	• Ins. Grade	F
• Max. Axle Load	2500kg	• Weight	93kg

☉ Brake Type	EMM600	Voltage / Current	DC110V / 2×0.86A (Standard)	DC207V / 2×0.43A (Optional)
--------------	---------------	-------------------	-----------------------------	-----------------------------

• Notes : The machine can be equipped with single coil brake. (DC110V/1.54A & DC207V/0.95A)

DIMENSIONS



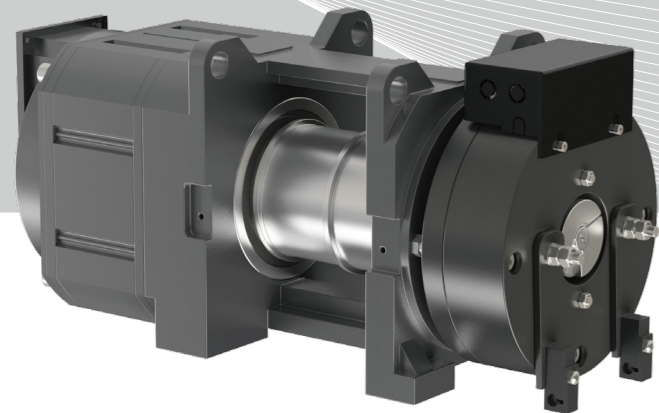
SPEC.SHEET



Type	MGD100B												
Spec.	Load	Elv. Speed	Sheave Diam.	Groove	Voltage	Current	Power	Speed	Freq.	Torque	Poles	L	L1
	kg	m/s	mm		V	A	kW	r/min	Hz	N-m		mm	mm
Roping 2:1													
320-0.4	320	0.4	100	2×60	220 / 380	4	1.0	153	20.4	60	16	490	134
320-0.5	320	0.5		2×60	220 / 380	7 / 4	1.2	191	25.5	60	16		
320-0.63	320	0.63		2×60	220 / 380	7 / 4	1.5	241	32.1	60	16		
320-1.0	320	1.0		2×60	220 / 380	9 / 6	2.4	382	50.9	60	16		
400-0.4	400	0.4	100	2×60	220 / 380	5	1.2	153	20.4	75	16	490	134
400-0.5	400	0.5		2×60	220 / 380	8 / 5	1.5	191	25.5	75	16		
400-0.63	400	0.63		2×60	220 / 380	8 / 5	1.9	241	32.1	75	16		
400-1.0	400	1.0		2×60	220 / 380	12 / 8	3.0	382	50.9	75	16		
450-0.4	450	0.4	100	2×60	220 / 380	8 / 5	1.3	153	20.4	80	16	490	134
450-0.5	450	0.5		2×60	220 / 380	8 / 5	1.6	191	25.5	80	16		
450-0.63	450	0.63		2×60	220 / 380	8 / 5	2.0	241	32.1	80	16		
450-1.0	450	1.0		2×60	220 / 380	12 / 8	3.2	382	50.9	80	16		
Roping 1:1													
320-0.3	320	0.3	100	2×60	220 / 380	6 / 4	0.7	57	7.6	110	16	540	184
320-0.4	320	0.4		2×60	220 / 380	6 / 4	0.9	76	10.1	110	16		
400-0.3	400	0.3	100	2×60	220 / 380	7 / 5	0.8	57	7.6	130	16	540	184
400-0.4	400	0.4		2×60	220 / 380	7 / 5	1.0	76	10.1	130	16		

• Notes:

- ✎ *1. The machine is only used for machine roomless.
- ✎ *2. Rated torque≥130Nm,brake current 2.0A(DC110V),brake current 1.2A(DC207V).
- ✎ *3. Facing the brake, junction box can be located on the left, right or optionally.



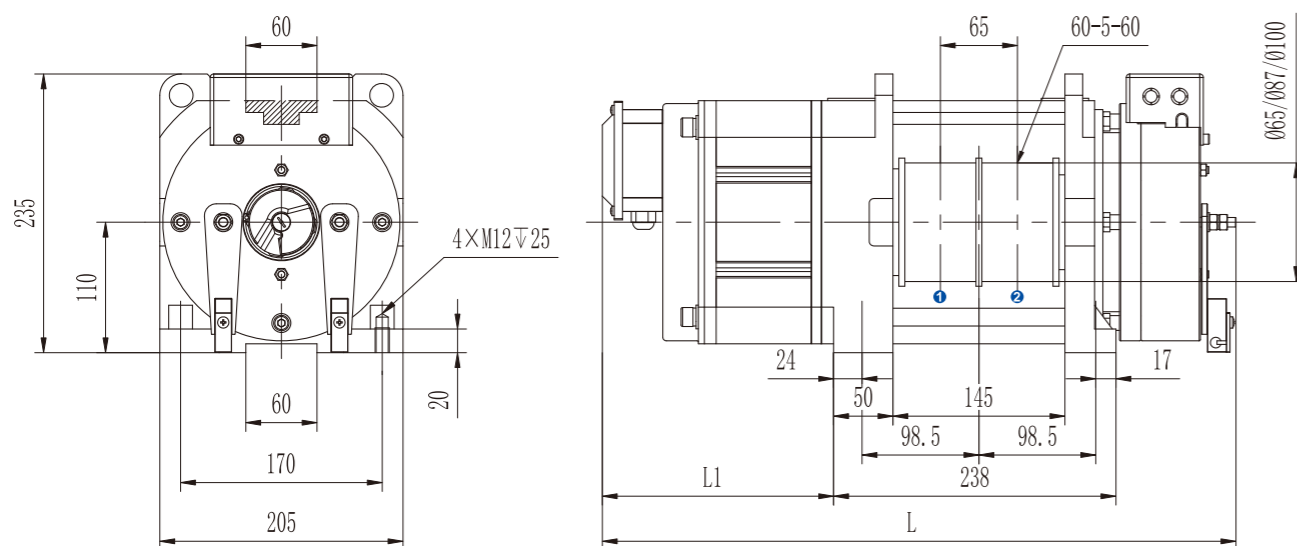
MGD100N ²

PMS GEARLESS BELT TRACTION MACHINE

• Voltage	220V / 380V	• Roping	1:1 / 2:1
• Load	(320~450)kg	• Elv. Speed	(0.3~1.0)m/s
• Sheave Diam.	(Φ65/Φ87/Φ100)mm	• Duty / Starts Per Hour	S5-40% / 180st/h
• Shell Protection Grade	IP41	• Ins. Grade	F
• Max. Axle Load	2500kg	• Weight	75kg
• Brake Type	EMM600	Voltage / Current	DC110V / 1.54A (Standard) DC207V / 0.95A (Optional)

• Notes : The machine can only be equipped with single coil brake.

DIMENSIONS



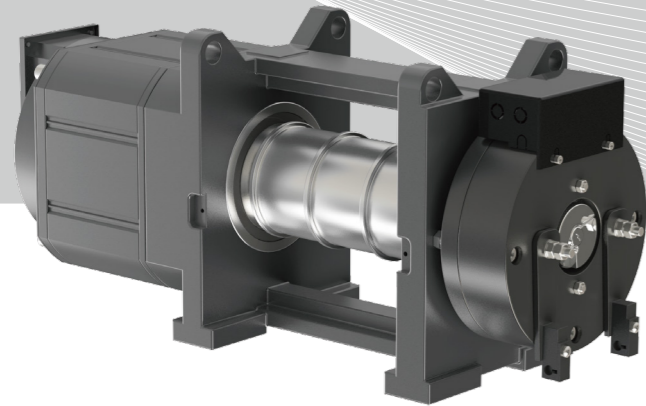
SPEC.SHEET

Type	MGD100N												
Spec.	Load	Elv. Speed	Sheave Diam.	Sheave Groove	Voltage	Current	Power	Speed	Freq.	Torque	Poles	L	L1
	kg	m/s	mm		V	A	kW	r/min	Hz	N·m		mm	mm
Roping 2:1													
320-0.3A	320	0.3	65	2×60	220 / 380	4	0.6	176	14.7	30	10	510	170
320-0.4A	320	0.4		2×60	220 / 380	4	0.7	235	19.6	30	10		
320-0.5A	320	0.5		2×60	220 / 380	4	0.9	294	24.5	30	10		
320-0.63A	320	0.63		2×60	220 / 380	7 / 4	1.2	370	30.8	30	10		
400-0.3A	400	0.3	65	2×60	220 / 380	5	0.7	176	14.7	40	10	510	170
400-0.4A	400	0.4		2×60	220 / 380	5	1.0	235	19.6	40	10		
400-0.5A	400	0.5		2×60	220 / 380	5	1.2	294	24.5	40	10		
400-0.63A	400	0.63		2×60	220 / 380	9 / 5	1.5	370	30.8	40	10		
450-0.3A	450	0.3	65	2×60	220 / 380	5	0.9	176	14.7	50	10	510	170
450-0.4A	450	0.4		2×60	220 / 380	5	1.2	235	19.6	50	10		
450-0.5A	450	0.5		2×60	220 / 380	6	1.5	294	24.5	50	10		
450-0.63A	450	0.63		2×60	220 / 380	10 / 6	1.9	370	30.8	50	10		
320-0.3B	320	0.3	87	2×60	220 / 380	4	0.6	132	11.0	40	10	510	170
320-0.4B	320	0.4		2×60	220 / 380	4	0.7	176	14.7	40	10		
320-0.5B	320	0.5		2×60	220 / 380	7 / 4	0.9	220	18.3	40	10		
320-0.63B	320	0.63		2×60	220 / 380	7 / 4	1.2	277	23.1	40	10		
320-1.0B	320	1.0		2×60	220 / 380	10 / 7	1.8	439	36.6	40	10		
400-0.3B	400	0.3	87	2×60	220 / 380	5	0.8	132	11.0	55	10	510	170
400-0.4B	400	0.4		2×60	220 / 380	5	1.0	176	14.7	55	10		
400-0.5B	400	0.5		2×60	220 / 380	8 / 5	1.3	220	18.3	55	10		
400-0.63B	400	0.63		2×60	220 / 380	8 / 5	1.6	277	23.1	55	10		
400-1.0B	400	1.0		2×60	220 / 380	12 / 8	2.5	439	36.6	55	10		
450-0.3B	450	0.3	87	2×60	220 / 380	6	0.8	132	11.0	60	10	540	200
450-0.4B	450	0.4		2×60	220 / 380	6	1.1	176	14.7	60	10		
450-0.5B	450	0.5		2×60	220 / 380	9 / 6	1.4	220	18.3	60	10		
450-0.63B	450	0.63		2×60	220 / 380	9 / 6	1.7	277	23.1	60	10		
450-1.0B	450	1.0		2×60	220 / 380	14 / 9	2.8	439	36.6	60	10		
320-0.3C	320	0.3	100	2×60	220 / 380	4	0.6	115	9.6	50	10	510	170
320-0.4C	320	0.4		2×60	220 / 380	4	0.8	153	12.8	50	10		
320-0.5C	320	0.5		2×60	220 / 380	7 / 4	1.0	191	15.9	50	10		
320-0.63C	320	0.63		2×60	220 / 380	7 / 4	1.3	241	20.1	50	10		
320-1.0C	320	1.0		2×60	220 / 380	9 / 7	2.0	382	31.8	50	10		
400-0.3C	400	0.3	100	2×60	220 / 380	5	0.7	115	9.6	60	10	540	200
400-0.4C	400	0.4		2×60	220 / 380	5	1.0	153	12.8	60	10		
400-0.5C	400	0.5		2×60	220 / 380	8 / 5	1.2	191	15.9	60	10		
400-0.63C	400	0.63		2×60	220 / 380	8 / 5	1.5	241	20.1	60	10		
400-1.0C	400	1.0		2×60	220 / 380	12 / 8	2.4	382	31.8	60	10		
450-0.3C	450	0.3	100	2×60	220 / 380	5	0.8	115	9.6	70	10	540	200
450-0.4C	450	0.4		2×60	220 / 380	8 / 5	1.1	153	12.8	70	10		
450-0.5C	450	0.5		2×60	220 / 380	8 / 5	1.4	191	15.9	70	10		
450-0.63C	450	0.63		2×60	220 / 380	8 / 5	1.8	241	20.1	70	10		
450-1.0C	450	1.0		2×60	220 / 380	12 / 8	2.8	382	31.8	70	10		
Roping 1:1													
320-0.3	320	0.3	100	2×60	220 / 380	6 / 4	0.6	57	4.8	100	10	580	240
320-0.4	320	0.4		2×60	220 / 380	6 / 4	0.8	76	6.3	100	10		
400-0.3	400	0.3	100	2×60	220 / 380	7 / 5	0.8	57	4.8	130	10	580	240
400-0.4	400	0.4		2×60	220 / 380	7 / 5	1.0	76	6.3	130	10		

• Notes:

• *1. The machine is only used for machine roomless.

• *2. Rated torque≥130Nm,brake current 2.0A(DC110V),brake current 1.2A(DC207V).



MGD100N ³

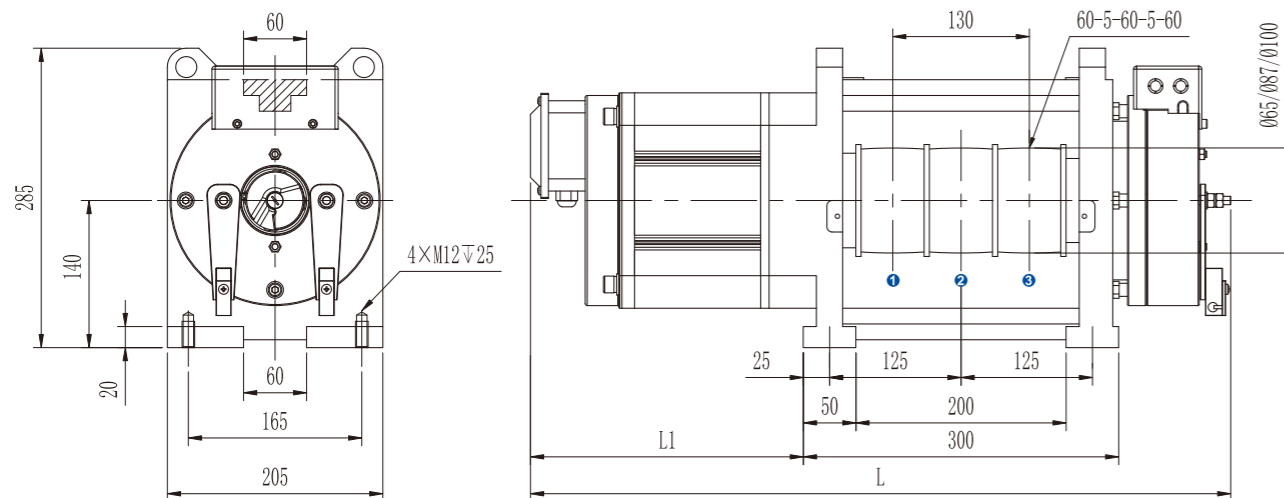
PMS GEARLESS BELT TRACTION MACHINE

• Voltage	220V / 380V	• Roping	1:1 / 2:1
• Load	(320~630)kg	• Elv. Speed	(0.3~1.0)m/s
• Sheave Diam.	(Φ65/Φ87/Φ100)mm	• Duty / Starts Per Hour	S5-40% / 180st/h
• Shell Protection Grade	IP41	• Ins. Grade	F
• Max. Axle Load	2500kg	• Weight	95kg

☉ Brake Type	EMM600	Voltage / Current	DC110V / 1.54A (Standard)	DC207V / 0.95A (Optional)
--------------	---------------	-------------------	---------------------------	---------------------------

• Notes : The machine can only be equipped with single coil brake.

DIMENSIONS



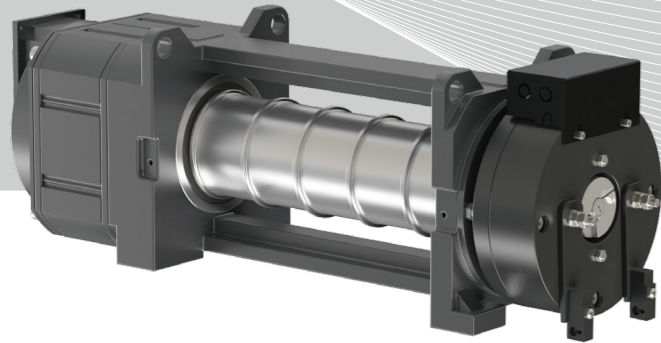
SPEC.SHEET

Type	MGD100N												
Spec.	Load	Elv. Speed	Sheave Diam.	Sheave Groove	Voltage	Current	Power	Speed	Freq.	Torque	Poles	L	L1
	kg	m/s	mm		V	A	kW	r/min	Hz	N-m		mm	mm
Roping 2:1													
	(320~450)kg		65		Refer to MGD100N2							595	185
	(320~400)kg		87		Refer to MGD100N2							595	185
	450kg		87		Refer to MGD100N2							625	215
320-0.3C	320	0.3	100	2×60	220 / 380	4	0.6	115	9.6	50	10	595	185
320-0.4C	320	0.4		2×60	220 / 380	4	0.8	153	12.8	50	10		
320-0.5C	320	0.5		2×60	220 / 380	7 / 4	1.0	191	15.9	50	10		
320-0.63C	320	0.63		2×60	220 / 380	7 / 4	1.3	241	20.1	50	10		
320-1.0C	320	1.0		2×60	220 / 380	9 / 7	2.0	382	31.8	50	10		
400-0.3C	400	0.3	100	2×60	220 / 380	5	0.7	115	9.6	60	10	625	215
400-0.4C	400	0.4		2×60	220 / 380	5	1.0	153	12.8	60	10		
400-0.5C	400	0.5		2×60	220 / 380	8 / 5	1.2	191	15.9	60	10		
400-0.63C	400	0.63		2×60	220 / 380	8 / 5	1.5	241	20.1	60	10		
400-1.0C	400	1.0		2×60	220 / 380	12 / 8	2.4	382	31.8	60	10		
450-0.3C	450	0.3	100	2×60	220 / 380	5	0.8	115	9.6	70	10	625	215
450-0.4C	450	0.4		2×60	220 / 380	8 / 5	1.1	153	12.8	70	10		
450-0.5C	450	0.5		2×60	220 / 380	8 / 5	1.4	191	15.9	70	10		
450-0.63C	450	0.63		2×60	220 / 380	8 / 5	1.8	241	20.1	70	10		
450-1.0C	450	1.0		2×60	220 / 380	12 / 8	2.8	382	31.8	70	10		
630-0.3	630	0.3	100	3×60	220 / 380	7	1.2	115	9.6	100	10	665	255
630-0.4	630	0.4		3×60	220 / 380	11 / 7	1.6	153	12.8	100	10		
630-0.5	630	0.5		3×60	220 / 380	11 / 7	2.0	191	15.9	100	10		
630-0.63	630	0.63		3×60	220 / 380	11 / 7	2.5	241	20.1	100	10		
630-1.0	630	1.0		3×60	220 / 380	16 / 11	4.0	382	31.8	100	10		
Roping 1:1													
320-0.3	320	0.3	100	3×60	220 / 380	6 / 4	0.6	57	4.8	100	10	665	255
320-0.4	320	0.4		3×60	220 / 380	6 / 4	0.8	76	6.3	100	10		
400-0.3	400	0.3	100	3×60	220 / 380	7 / 5	0.8	57	4.8	130	10	665	255
400-0.4	400	0.4		3×60	220 / 380	7 / 5	1.0	76	6.3	130	10		

• Notes:

*1、 The machine is only used for machine roomless.

*2、 Rated torque≥130Nm,brake current 2.0A(DC110V),brake current 1.2A(DC207V).



MGD100N 5

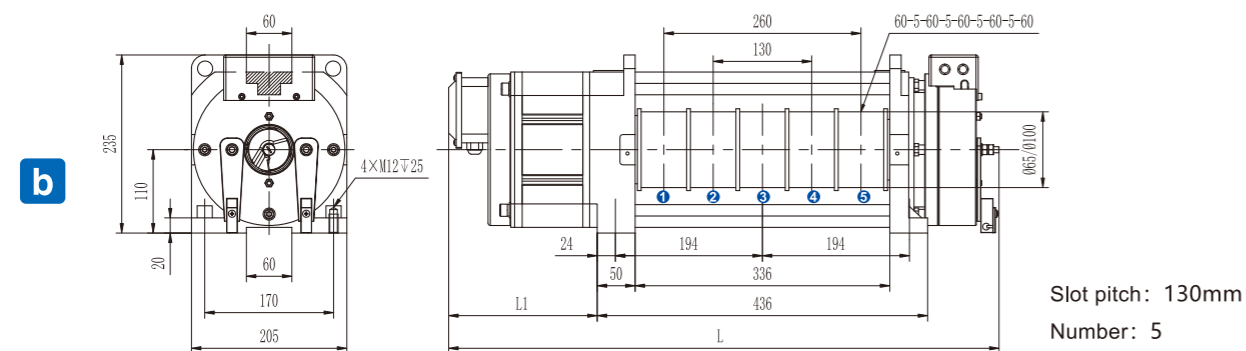
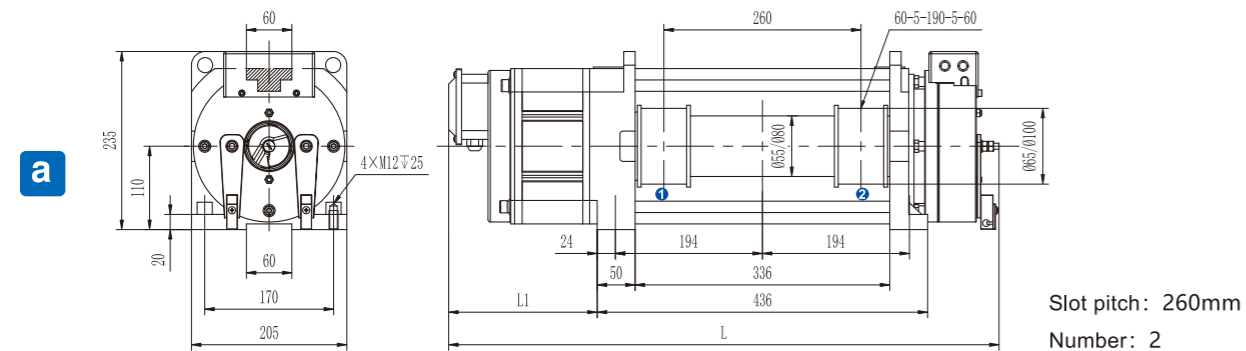
PMS GEARLESS BELT TRACTION MACHINE

• Voltage	220V / 380V	• Roping	2:1
• Load	(320~630)kg	• Elv. Speed	(0.3~1.0)m/s
• Sheave Diam.	Φ65mm/Φ100mm	• Duty / Starts Per Hour	S5-40% / 180st/h
• Shell Protection Grade	IP41	• Ins. Grade	F
• Max. Axle Load	2500kg	• Weight	100kg

☉ Brake Type	EMM600	Voltage / Current	DC110V / 1.5A (Standard)	DC207V / 0.93A (Optional)
--------------	---------------	-------------------	--------------------------	---------------------------

• Notes : The machine can only be equipped with single coil brake.

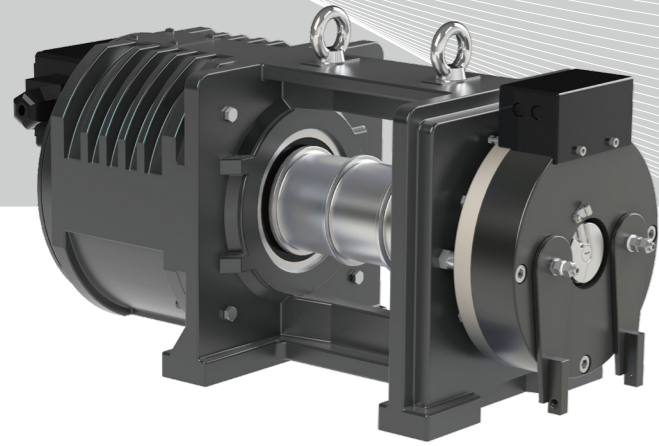
DIMENSIONS



SPEC.SHEET

Type	MGD100N												
Spec.	Load	Elv. Speed	Sheave Diam.	Sheave Groove	Voltage	Current	Power	Speed	Freq.	Torque	Poles	L	L1
	kg	m/s	mm		V	A	kW	r/min	Hz	N·m		mm	mm
320-0.3A	320	0.3	65	2×60	220 / 380	4	0.6	176	14.7	30	10	700	170
320-0.4A	320	0.4		2×60	220 / 380	4	0.7	235	19.6	30	10		
320-0.5A	320	0.5		2×60	220 / 380	4	0.9	294	24.5	30	10		
320-0.63A	320	0.63		2×60	220 / 380	7 / 4	1.2	370	30.8	30	10		
400-0.3A	400	0.3	65	2×60	220 / 380	5	0.7	176	14.7	40	10	700	170
400-0.4A	400	0.4		2×60	220 / 380	5	1.0	235	19.6	40	10		
400-0.5A	400	0.5		2×60	220 / 380	5	1.2	294	24.5	40	10		
400-0.63A	400	0.63		2×60	220 / 380	9 / 5	1.5	370	30.8	40	10		
450-0.3A	450	0.3	65	2×60	220 / 380	5	0.9	176	14.7	50	10	700	170
450-0.4A	450	0.4		2×60	220 / 380	5	1.2	235	19.6	50	10		
450-0.5A	450	0.5		2×60	220 / 380	6	1.5	294	24.5	50	10		
450-0.63A	450	0.63		2×60	220 / 380	10 / 6	1.9	370	30.8	50	10		
320-0.3B	320	0.3	100	2×60	220 / 380	4	0.6	115	9.6	50	10	700	170
320-0.4B	320	0.4		2×60	220 / 380	4	0.8	153	12.8	50	10		
320-0.5B	320	0.5		2×60	220 / 380	7 / 4	1.0	191	15.9	50	10		
320-0.63B	320	0.63		2×60	220 / 380	7 / 4	1.3	241	20.1	50	10		
320-1.0B	320	1.0		2×60	220 / 380	9 / 7	2.0	382	31.8	50	10		
400-0.3B	400	0.3	100	2×60	220 / 380	5	0.7	115	9.6	60	10	730	200
400-0.4B	400	0.4		2×60	220 / 380	5	1.0	153	12.8	60	10		
400-0.5B	400	0.5		2×60	220 / 380	8 / 5	1.2	191	15.9	60	10		
400-0.63B	400	0.63		2×60	220 / 380	8 / 5	1.5	241	20.1	60	10		
400-1.0B	400	1.0		2×60	220 / 380	12 / 8	2.4	382	31.8	60	10		
450-0.3B	450	0.3	100	2×60	220 / 380	5	0.8	115	9.6	70	10	730	200
450-0.4B	450	0.4		2×60	220 / 380	8 / 5	1.1	153	12.8	70	10		
450-0.5B	450	0.5		2×60	220 / 380	8 / 5	1.4	191	15.9	70	10		
450-0.63B	450	0.63		2×60	220 / 380	8 / 5	1.8	241	20.1	70	10		
450-1.0B	450	1.0		2×60	220 / 380	12 / 8	2.8	382	31.8	70	10		
630-0.3	630	0.3	100	3×60	220 / 380	7	1.2	115	9.6	100	10	770	240
630-0.4	630	0.4		3×60	220 / 380	11 / 7	1.6	153	12.8	100	10		
630-0.5	630	0.5		3×60	220 / 380	11 / 7	2.0	191	15.9	100	10		
630-0.63	630	0.63		3×60	220 / 380	11 / 7	2.5	241	20.1	100	10		
630-1.0	630	1.0		3×60	220 / 380	16 / 11	4.0	382	31.8	100	10		

• Notes:
*1. The machine is only used for machine roomless.



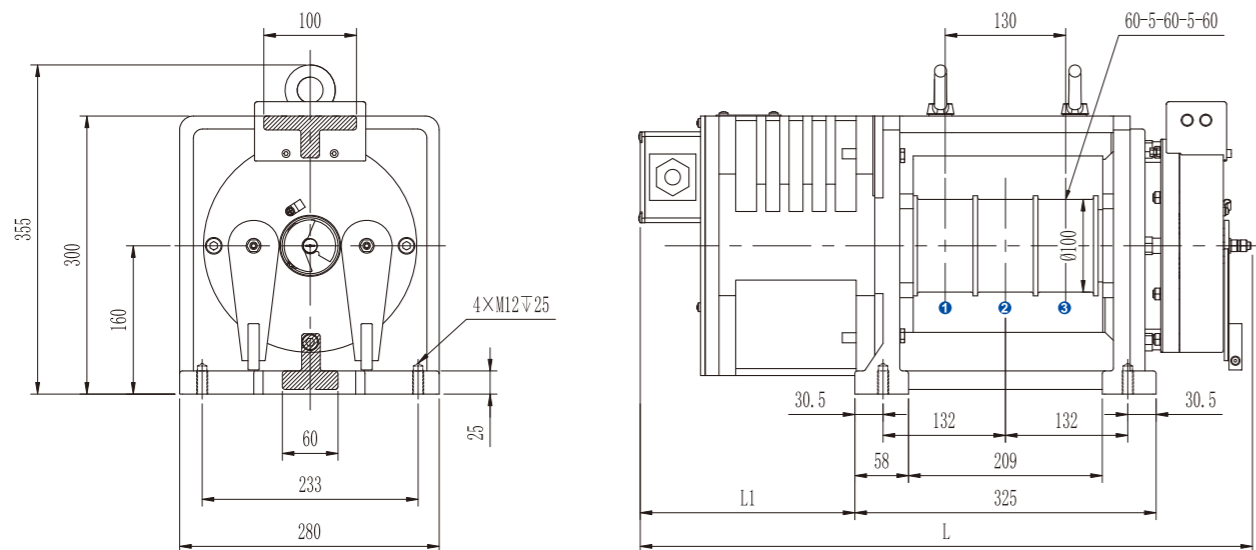
MGD100K ³

PMS GEARLESS BELT TRACTION MACHINE

• Voltage	380V	• Roping	2:1
• Load	(450~800)kg	• Elv. Speed	(0.5~1.75)m/s
• Sheave Diam.	Φ100mm	• Duty / Starts Per Hour	S5-40% / 180st/h
• Shell Protection Grade	IP41	• Ins. Grade	F
• Max. Axle Load	3000kg	• Weight	150kg
☉ Brake Type	EMM600	Voltage / Current	DC110V / 2×0.86A (Standard) DC207V / 2×0.43A (Optional)

• Notes : The machine can be equipped with single coil brake. (DC110V/2.0A & DC207V/1.2A)

DIMENSIONS



SPEC.SHEET

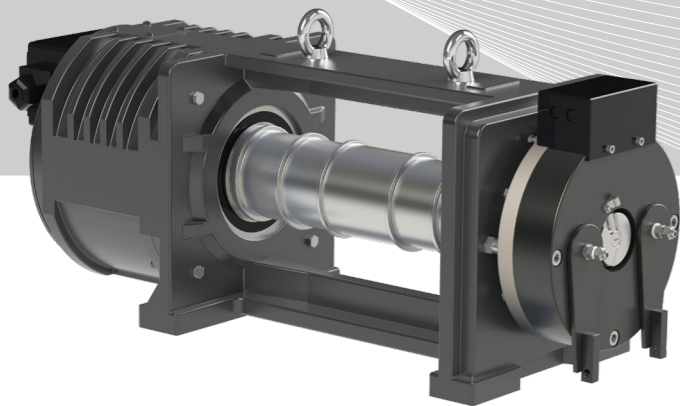


Type	MGD100K											
Spec.	Load	Elv. Speed	Sheave Diam.	Groove	Current	Power	Speed	Freq.	Torque	Poles	L	L1
	kg	m/s	mm		A	kW	r/min	Hz	N·m		mm	mm
450-0.5	450	0.5	100	3×60	5	1.6	191	25.5	80	16	640	210
450-0.63	450	0.63		3×60	5	2.0	241	32.1	80	16		
450-1.0	450	1.0		3×60	7	3.2	382	50.9	80	16		
450-1.5	450	1.5		3×60	12	4.8	573	76.4	80	16		
450-1.75	450	1.75		3×60	12	5.6	668	89.1	80	16		
630-0.5	630	0.5	100	3×60	7	2.2	191	25.5	110	16	640	210
630-0.63	630	0.63		3×60	7	2.8	241	32.1	110	16		
630-1.0	630	1.0		3×60	10	4.4	382	50.9	110	16		
630-1.5	630	1.5		3×60	17	6.6	573	76.4	110	16		
630-1.75	630	1.75		3×60	17	7.7	668	89.1	110	16		
800-0.5	800	0.5	100	3×60	8	2.6	191	25.5	130	16	670	240
800-0.63	800	0.63		3×60	8	3.3	241	32.1	130	16		
800-1.0	800	1.0		3×60	12	5.2	382	50.9	130	16		
800-1.5	800	1.5		3×60	20	7.8	573	76.4	130	16		
800-1.75	800	1.75		3×60	20	9.1	668	89.1	130	16		

• Notes:

*1. The machine is only used for machine roomless.

*2. Rated torque≥130Nm,brake current 2.0A(DC110V),brake current 1.2A(DC207V).



MGD100K ⁴

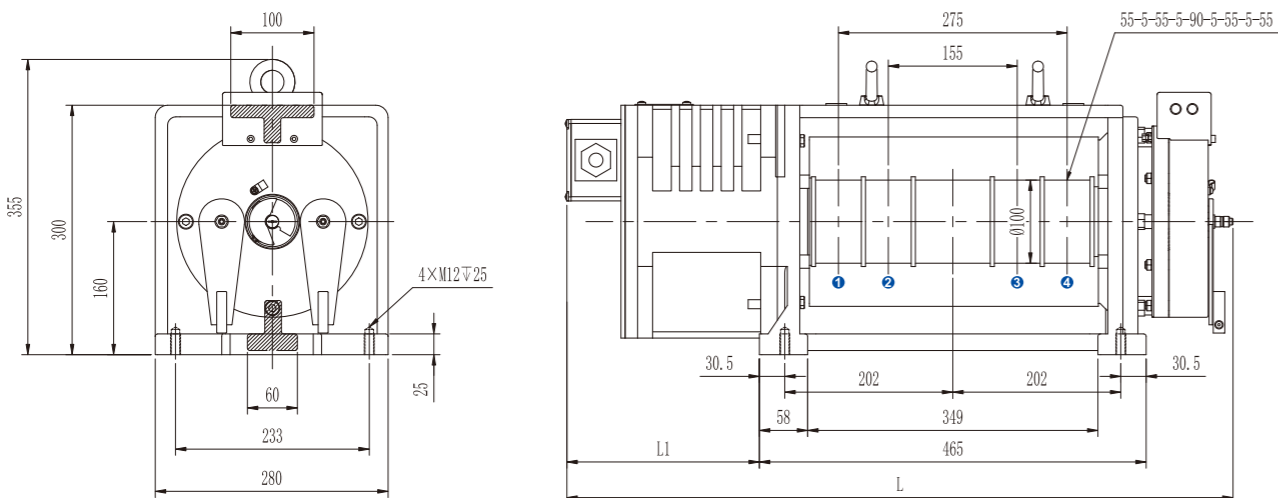
PMS GEARLESS BELT TRACTION MACHINE

• Voltage	380V	• Roping	2:1
• Load	(800~1150)kg	• Elv. Speed	(0.5~2.0)m/s
• Sheave Diam.	Φ100mm	• Duty / Starts Per Hour	S5-40% / 180st/h
• Shell Protection Grade	IP41	• Ins. Grade	F
• Max. Axle Load	3000kg	• Weight	170kg

☉ Brake Type	EMM600	Voltage / Current	DC110V / 2×0.86A (Standard)	DC207V / 2×0.43A (Optional)
--------------	---------------	-------------------	-----------------------------	-----------------------------

• Notes : The machine can be equipped with single coil brake. (DC110V/2.0A & DC207V/1.2A)

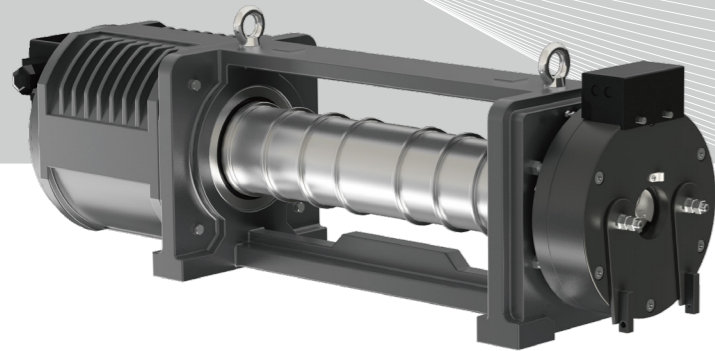
DIMENSIONS



SPEC.SHEET

Type	MGD100K											
Spec.	Load	Elv. Speed	Sheave Diam.	Groove	Current	Power	Speed	Freq.	Torque	Poles	L	L1
	kg	m/s	mm		A	kW	r/min	Hz	N-m		mm	mm
800-0.5	800	0.5	100	4×55	8	2.6	191	25.5	130	16	810	240
800-0.63	800	0.63		4×55	8	3.3	241	32.1	130	16		
800-1.0	800	1.0		4×55	12	5.2	382	50.9	130	16		
800-1.5	800	1.5		4×55	20	7.8	573	76.4	130	16		
800-1.75	800	1.75		4×55	20	9.1	668	89.1	130	16		
1000-0.5	1000	0.5	100	4×55	10	3.2	191	25.5	160	16	810	240
1000-0.63	1000	0.63		4×55	10	4.0	241	32.1	160	16		
1000-1.0	1000	1.0		4×55	16	6.4	382	50.9	160	16		
1000-1.5	1000	1.5		4×55	26	9.6	573	76.4	160	16		
1000-1.75	1000	1.75		4×55	26	11.2	668	89.1	160	16		
1000-2.0	1000	2.0		4×55	27	12.8	764	50.9	160	8		
1150-0.5	1150	0.5	100	4×55	12	3.6	191	25.5	180	16	870	300
1150-0.63	1150	0.63		4×55	12	4.5	241	32.1	180	16		
1150-1.0	1150	1.0		4×55	17	7.2	382	50.9	180	16		
1150-1.5	1150	1.5		4×55	28	10.8	573	76.4	180	16		
1150-1.75	1150	1.75		4×55	28	12.6	668	89.1	180	16		
1150-2.0	1150	2.0		4×55	31	14.4	764	50.9	180	8		

• Notes:
 *1、 The machine is only used for machine roomless.



MGD100K ⁶

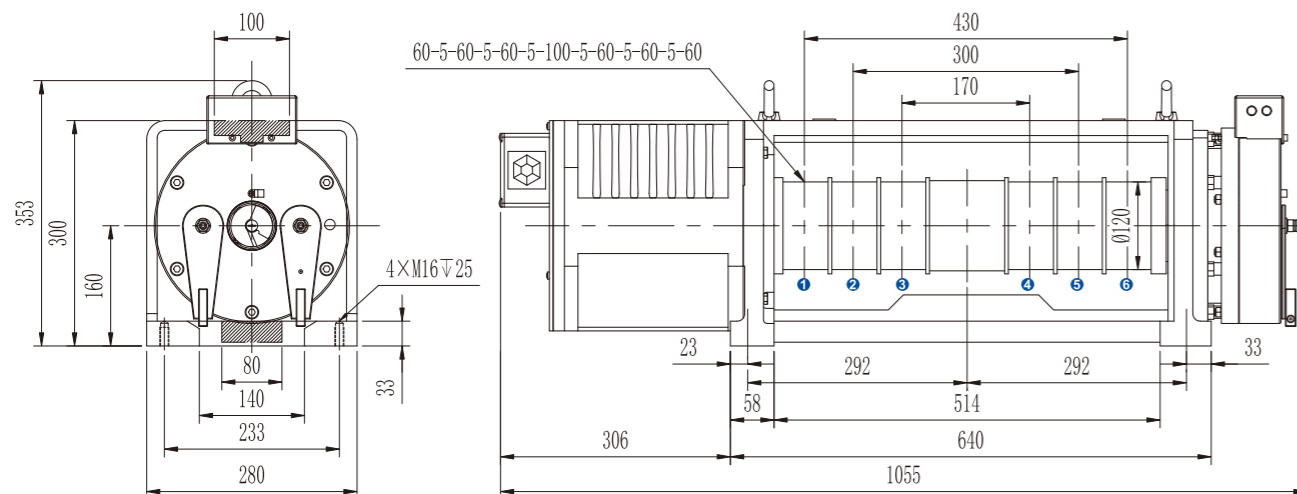
PMS GEARLESS BELT TRACTION MACHINE

• Voltage	380V	• Roping	2:1
• Load	(1250~1350)kg	• Elv. Speed	(1.0~2.0)m/s
• Sheave Diam.	Φ120mm	• Duty / Starts Per Hour	S5-40% / 180st/h
• Shell Protection Grade	IP41	• Ins. Grade	F
• Max. Axle Load	3200kg	• Weight	235kg

☉ Brake Type	EMM600	Voltage / Current	DC110V / 2×1.2A (Standard)	DC207V / 2×0.71A (Optional)
--------------	---------------	-------------------	----------------------------	-----------------------------

• Notes : The machine can be equipped with single coil brake. (DC110V/2.0A & DC207V/1.2A)

DIMENSIONS

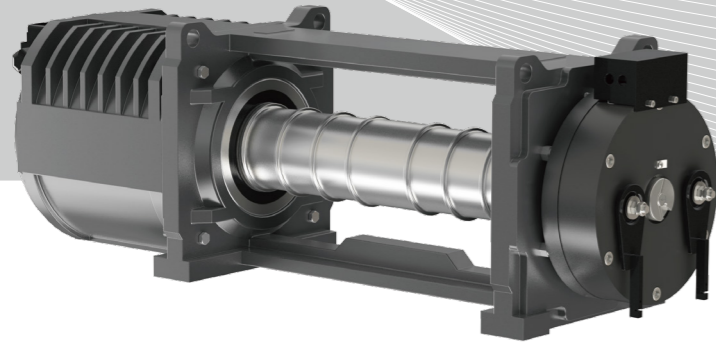


SPEC.SHEET

Type	MGD100K									
Spec.	Load	Elv. Speed	Sheave Diam.	Groove	Current	Power	Speed	Freq.	Torque	Poles
	kg	m/s	mm		A	kW	r/min	Hz	N-m	
1250-1.0	1250	1.0	120	6×60	18	7.8	318	42.4	235	16
1250-1.5	1250	1.5		6×60	29	11.7	477	63.6	235	16
1250-1.75	1250	1.75		6×60	29	13.7	557	74.3	235	16
1250-2.0	1250	2.0		6×60	33	16.0	637	84.9	235	16
1350-1.0	1350	1.0	120	6×60	19	8.5	318	42.4	250	16
1350-1.5	1350	1.5		6×60	32	12.7	477	63.6	250	16
1350-1.75	1350	1.75		6×60	32	14.8	557	74.3	250	16
1350-2.0	1350	2.0		6×60	35	16.9	637	84.9	250	16

• Notes:

✎ *1, The machine is only used for machine roomless.



MGD120

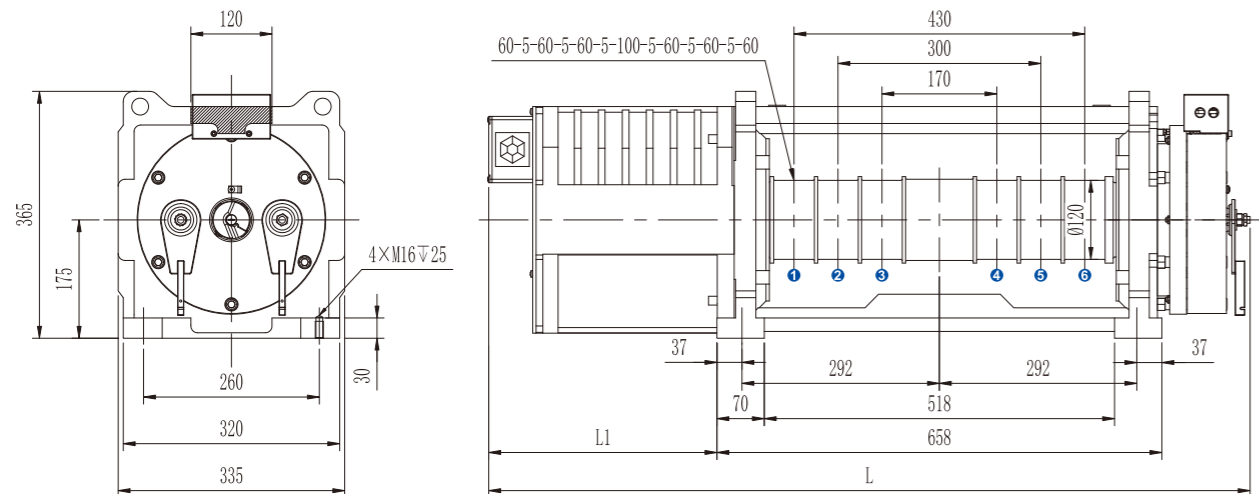
PMS GEARLESS BELT TRACTION MACHINE

• Voltage	380V	• Roping	2:1
• Load	(1350~2000)kg	• Elv. Speed	(1.0~2.5)m/s
• Sheave Diam.	Φ120mm	• Duty / Starts Per Hour	S5-40% / 180st/h
• Shell Protection Grade	IP41	• Ins. Grade	F
• Max. Axle Load	5000kg	• Weight	285kg

☉ Brake Type	EMM600	Voltage / Current	DC110V / 2×1.47A (Standard)	DC207V / 2×0.86A (Optional)
--------------	---------------	-------------------	-----------------------------	-----------------------------

• Notes : The machine can be equipped with single coil brake. (DC110V/2.3A & DC207V/1.3A)

DIMENSIONS



SPEC.SHEET

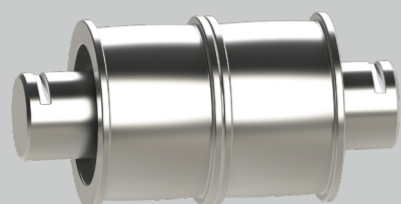
Type	MGD120											
Spec.	Load	Elv. Speed	Sheave Diam.	Groove	Current	Power	Speed	Freq.	Torque	Poles	L	L1
	kg	m/s	mm		A	kW	r/min	Hz	N·m		mm	mm
1350-1.0	1350	1.0	120	6×60	18	8.7	318	63.6	260	24	1085	300
1350-1.5	1350	1.5		6×60	27	13.0	477	95.4	260	24		
1350-1.75	1350	1.75		6×60	31	15.2	557	55.7	260	12		
1350-2.0	1350	2.0		6×60	36	17.3	637	63.7	260	12		
1350-2.5	1350	2.5		6×60	46	21.7	796	79.6	260	12		
1600-1.0	1600	1.0	120	6×60	22	10.3	318	63.6	310	24	1085	300
1600-1.5	1600	1.5		6×60	32	15.5	477	95.4	310	24		
1600-1.75	1600	1.75		6×60	37	18.1	557	55.7	310	12		
1600-2.0	1600	2.0		6×60	43	20.7	637	63.7	310	12		
1600-2.5	1600	2.5		6×60	55	25.8	796	79.6	310	12		
2000-1.0	2000	1.0	120	6×60	31	13.0	318	63.6	390	24	1125	340
2000-1.5	2000	1.5		6×60	43	19.5	477	95.4	390	24		
2000-1.75	2000	1.75		6×60	48	22.7	557	55.7	390	12		
2000-2.0	2000	2.0		6×60	55	26.0	637	63.7	390	12		
2000-2.5	2000	2.5		6×60	70	32.5	796	79.6	390	12		

• Notes:

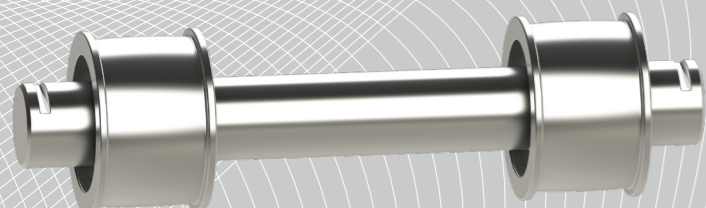
✎ *1, The machine is only used for machine roomless.

✎ *2, Rated torque≥390Nm,brake current 2.3A(DC110V),brake current 1.3A(DC207V).

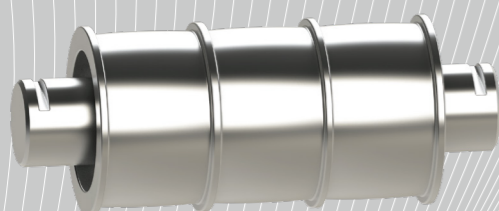
MGD GUIDE WHEEL



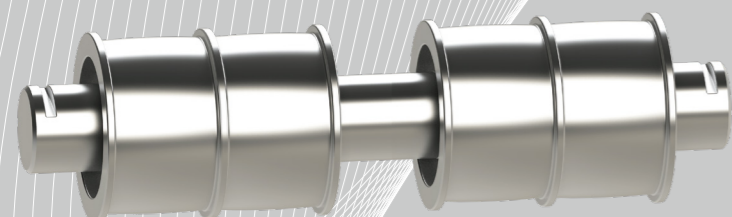
For MGD87/MGD100B/MGD100N2



For MGD100/MGD100N5

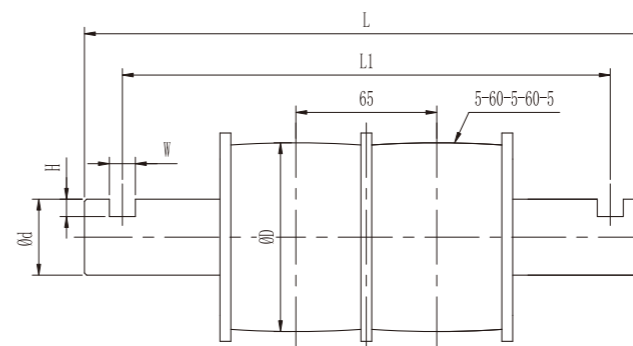


For MGD100/MGD100N3/MGD100N5/MGD100K3/MGD100K6/MGD120



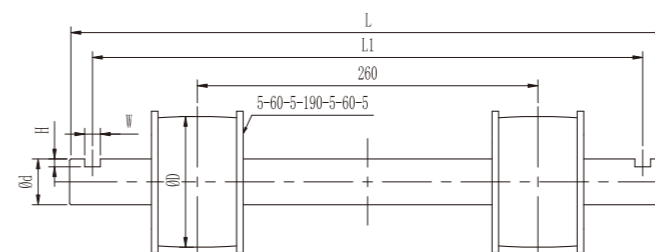
For MGD100K4

COMPONENT PARTS



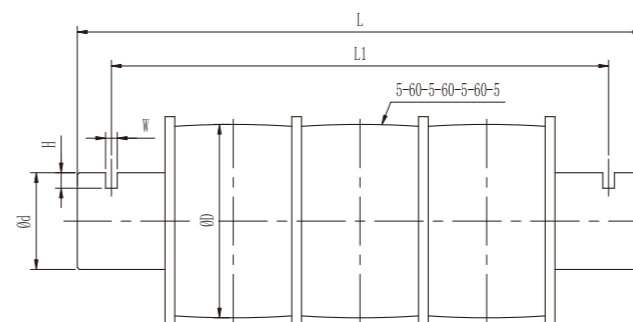
L(mm)	L1(mm)	H(mm)	W(mm)	ØD(mm)	Ød(mm)	Notes
260	225	6	12	87	35	MGD87
200	177	5	5	87	35	
260	225	8	6	100	35	MGD100B
210	188	8	6	100	50	
250	230	6	6	65	35	MGD100N2 (Ø65)
196	150	6	6	65	35	

For MGD87/MGD100B/MGD100N2



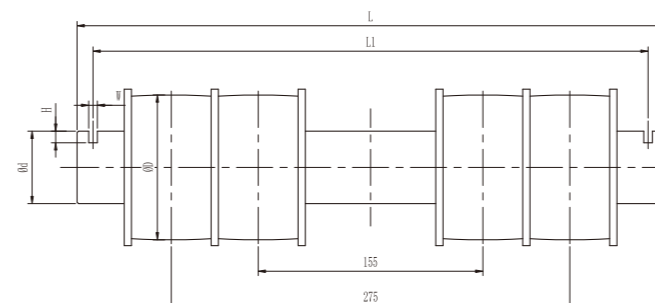
L(mm)	L1(mm)	H(mm)	W(mm)	ØD(mm)	Ød(mm)	Notes
455	420	6	12	100	35	MGD100
405	383	8	6	100	35	
405	361	6	6	65	35	MGD100N5 (Ø65)
405	383	8	6	65	35	

For MGD100/MGD100N5



L(mm)	L1(mm)	H(mm)	W(mm)	ØD(mm)	Ød(mm)	Notes
290	254	8	6	100	50	MGD100/MGD100N3/ MGD100N5/MGD100K3/ MGD100K6/MGD120
312	290	8	6	100	50	

For MGD100/MGD100N3/MGD100N5/MGD100K3/MGD100K6/MGD120

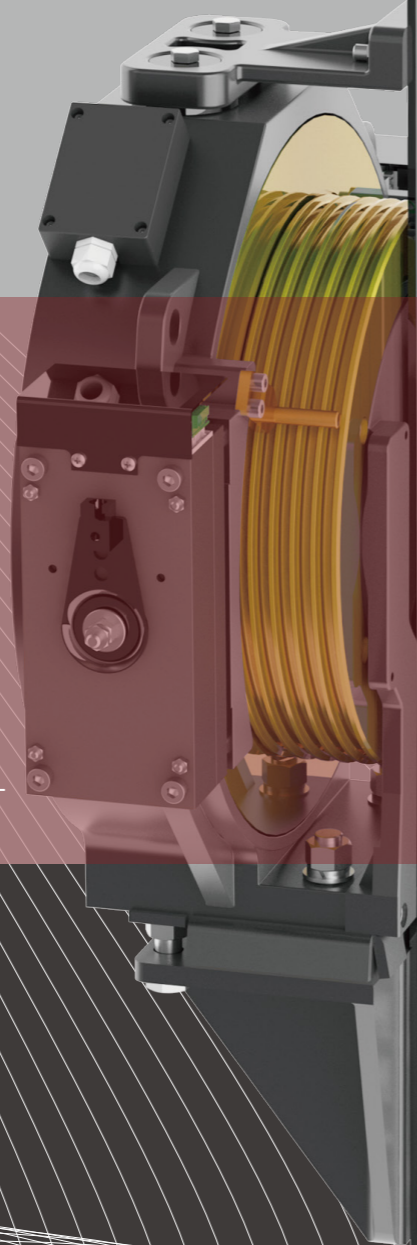


L(mm)	L1(mm)	H(mm)	W(mm)	ØD(mm)	Ød(mm)	Notes
405	383	8	6	100	50	MGD100K4
400	370	8	10	100	50	

For MGD100K4

MONADRIVE®
MCB

PMS GEARLESS TRACTION MACHINE



MONADRIVE®

MCB SERIES INCLUDES

Load (630–1000) kg
Speed (1.0–1.75) m/s

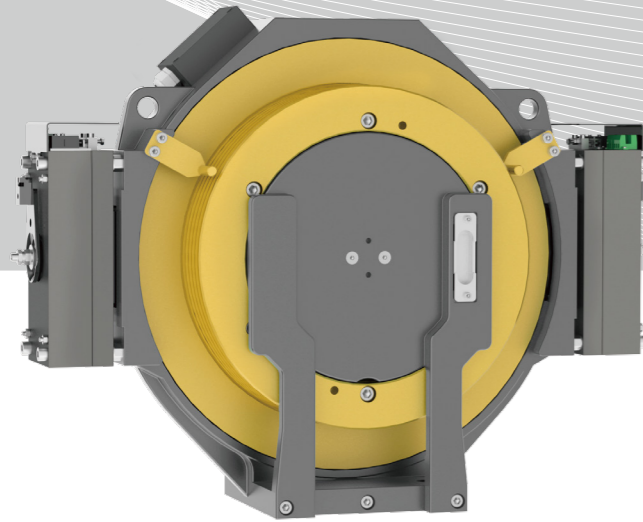
MCB100 ●

Load (800–1250) kg
Speed (1.0–1.75) m/s

MCB200 ●

Load (1350–1600) kg
Speed (1.0–1.75) m/s

MCB300 ●

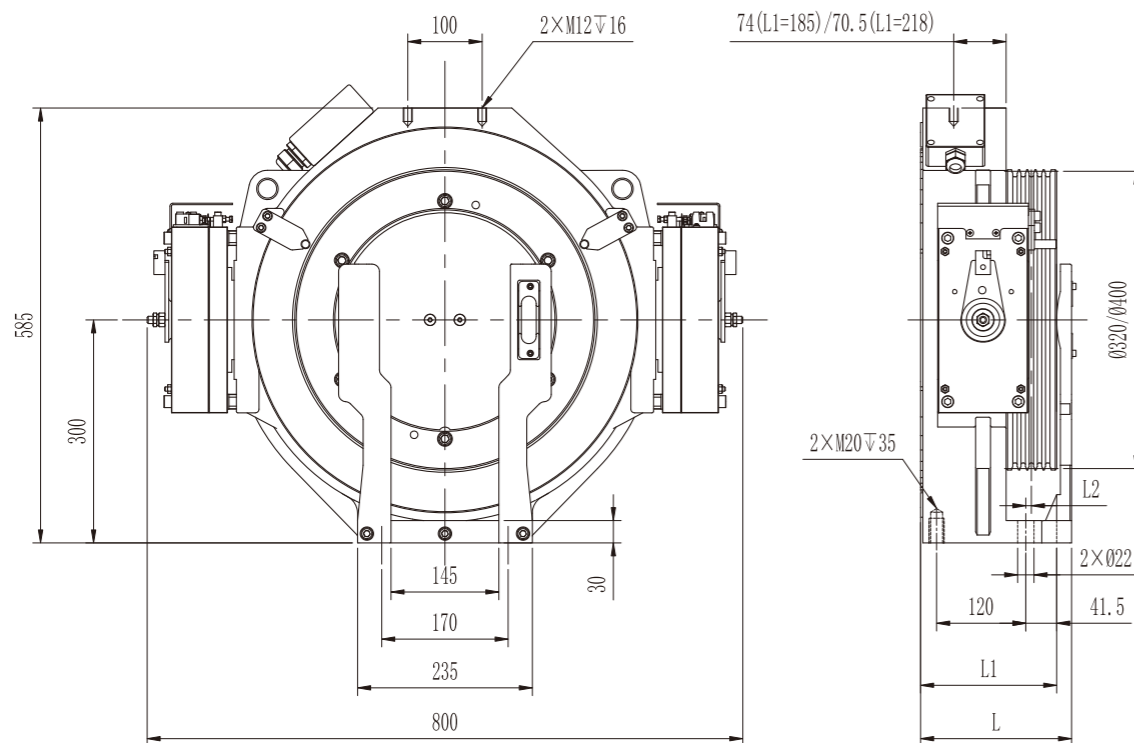


MCB100

PMS GEARLESS TRACTION MACHINE

• Voltage	380V	• Roping	2:1
• Load	(630~1000)kg	• Elv. Speed	(1.0~1.75)m/s
• Sheave Diam.	Φ320mm/Φ400mm	• Duty / Starts Per Hour	S5-40% / 240st/h
• Shell Protection Grade	IP41	• Ins. Grade	F
• Max. Axle Load	2500kg	• Weight	275kg
⊙ Brake Type	EMK9K	Voltage / Current	DC110V / 2×1.3A (Standard) DC207V / 2×0.8A (Optional)

DIMENSIONS



SPEC.SHEET

Type	MCB100																	
Spec.	Load	Elv. Speed	Sheave Diam.	Sheave Groove	Current	Power	Speed	Freq.	Torque	Poles	L	L1	L2	L3	β Angle ³			
	kg	m/s	mm		A	kW	r/min	Hz	N·m		mm	mm	mm	mm	°			
630-1.0A	630	1.0	320	4×Φ8×11	11	4.0	119	31.7	320	32	205	185	7.5	39	95			
630-1.5A	630	1.5		4×Φ8×11	14	6.0	179	47.7	320	32								
630-1.6A	630	1.6		4×Φ8×11	16	6.4	191	50.9	320	32								
630-1.75A	630	1.75	4×Φ8×11	16	7.0	209	55.7	320	32									
800-1.0A	800	1.0	320	5×Φ8×11	13	5.1	119	31.7	410	32	205	185	7.5	39		95		
800-1.5A	800	1.5		5×Φ8×11	18	7.7	179	47.7	410	32								
800-1.6A	800	1.6		5×Φ8×11	21	8.2	191	50.9	410	32								
800-1.75A	800	1.75	5×Φ8×11	21	9.0	209	55.7	410	32									
630-1.0B	630	1.0	400	4×Φ8×11	10	4.0	95	25.3	400	32	205	185	7.5	39			95	
630-1.5B	630	1.5		4×Φ8×11	13	6.0	143	38.1	400	32								
630-1.6B	630	1.6		4×Φ8×11	16	6.4	153	40.8	400	32								
630-1.75B	630	1.75	4×Φ8×11	16	7.0	167	44.5	400	32									
800-1.0B	800	1.0	400	5×Φ8×11	12	5.1	95	25.3	510	32	238	218	/	47				95
800-1.5B	800	1.5		5×Φ8×11	18	7.6	143	38.1	510	32								
800-1.6B	800	1.6		5×Φ8×11	20	8.2	153	40.8	510	32								
800-1.75B	800	1.75	5×Φ8×11	20	8.9	167	44.5	510	32									
1000-1.0	1000	1.0	400	6×Φ8×11	15	6.4	95	25.3	640	32	238	218	/	47	95			
1000-1.5	1000	1.5		6×Φ8×11	23	9.6	143	38.1	640	32								
1000-1.6	1000	1.6		6×Φ8×11	26	10.3	153	40.8	640	32								
1000-1.75	1000	1.75	6×Φ8×11	26	11.2	167	44.5	640	32									

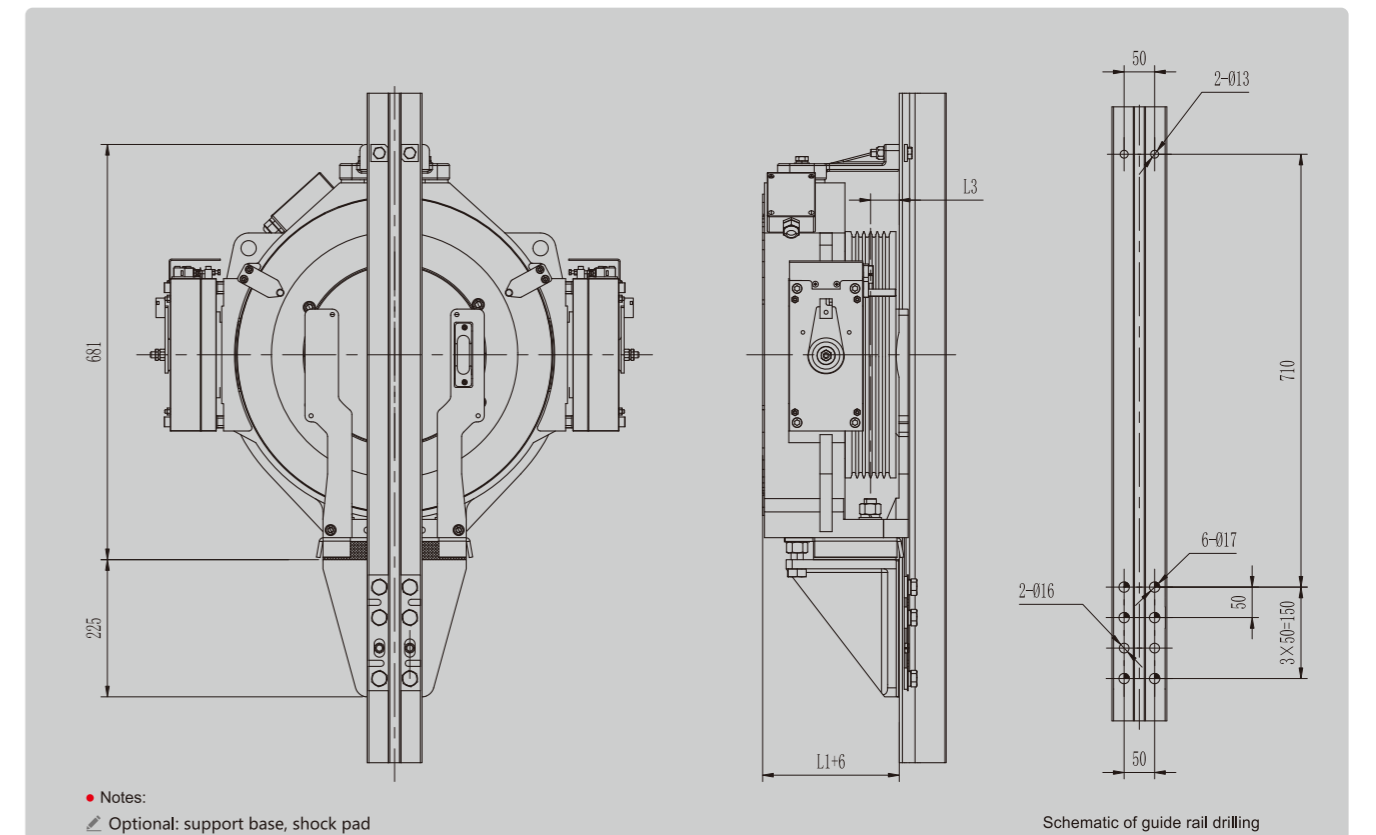
• Notes:

∠ *1. The machine is only used for machine roomless.

∠ *2. Standard configuration:sin&cos encoder.

∠ *3. The above is recommended value of cut angle,it's optional according to practical condition.

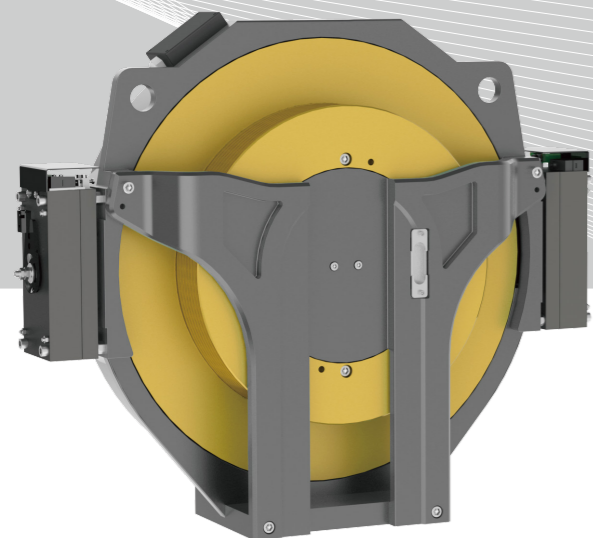
DIMENSIONS



• Notes:

∠ Optional: support base, shock pad

Schematic of guide rail drilling



MCB200

PMS GEARLESS TRACTION MACHINE

● Voltage	380V	● Roping	2:1
● Load	(800~1250)kg	● Elv. Speed	(1.0~1.75)m/s
● Sheave Diam.	Φ400mm/Φ480mm	● Duty / Starts Per Hour	S5-40% / 240st/h
● Shell Protection Grade	IP41	● Ins. Grade	F
● Max. Axle Load	3500kg	● Weight	375kg

⊙ Brake Type	EMK9K	Voltage / Current	DC110V / 2×1.3A (Standard)	DC207V / 2×0.8A (Optional)
--------------	-------	-------------------	----------------------------	----------------------------

SPEC.SHEET

Type	MCB200										
Spec.	Load	Elv. Speed	Sheave Diam.	Sheave Groove	Current	Power	Speed	Freq.	Torque	Poles	β Angle
	kg	m/s	mm		A	kW	r/min	Hz	N-m		°
800-1.0	800	1.0	400	5×Φ8×11	12	5.1	95	31.7	510	40	95
800-1.5	800	1.5		5×Φ8×11	18	7.6	143	47.7	510	40	
800-1.6	800	1.6		5×Φ8×11	20	8.2	153	51.0	510	40	
800-1.75	800	1.75		5×Φ8×11	20	8.9	167	55.7	510	40	
1000-1.0A	1000	1.0	400	6×Φ8×11	15	6.4	95	31.7	640	40	
1000-1.5A	1000	1.5		6×Φ8×11	23	9.6	143	47.7	640	40	
1000-1.6A	1000	1.6		6×Φ8×11	26	10.3	153	51.0	640	40	
1000-1.75A	1000	1.75		6×Φ8×11	26	11.2	167	55.7	640	40	
1150-1.0A	1150	1.0	400	6×Φ8×11	17	7.3	95	31.7	730	40	
1150-1.5A	1150	1.5		6×Φ8×11	25	10.9	143	47.7	730	40	
1150-1.6A	1150	1.6		6×Φ8×11	30	11.7	153	51.0	730	40	
1150-1.75A	1150	1.75		6×Φ8×11	30	12.8	167	55.7	730	40	
1250-1.0	1250	1.0	400	7×Φ8×11	20	8.0	95	31.7	800	40	
1250-1.5	1250	1.5		7×Φ8×11	30	12.0	143	47.7	800	40	
1250-1.6	1250	1.6		7×Φ8×11	34	12.8	153	51.0	800	40	
1250-1.75	1250	1.75		7×Φ8×11	34	14.0	167	55.7	800	40	
1000-1.0B	1000	1.0	480	6×Φ8×11	16	6.4	80	26.7	760	40	
1000-1.5B	1000	1.5		6×Φ8×11	23	9.5	119	39.7	760	40	
1000-1.6B	1000	1.6		6×Φ8×11	27	10.1	127	42.3	760	40	
1000-1.75B	1000	1.75		6×Φ8×11	27	11.1	139	46.3	760	40	
1150-1.0B	1150	1.0	480	6×Φ8×11	19	7.4	80	26.7	880	40	
1150-1.5B	1150	1.5		6×Φ8×11	30	11.0	119	39.7	880	40	
1150-1.6B	1150	1.6		6×Φ8×11	30	11.7	127	42.3	880	40	
1150-1.75B	1150	1.75		6×Φ8×11	30	12.8	139	46.3	880	40	

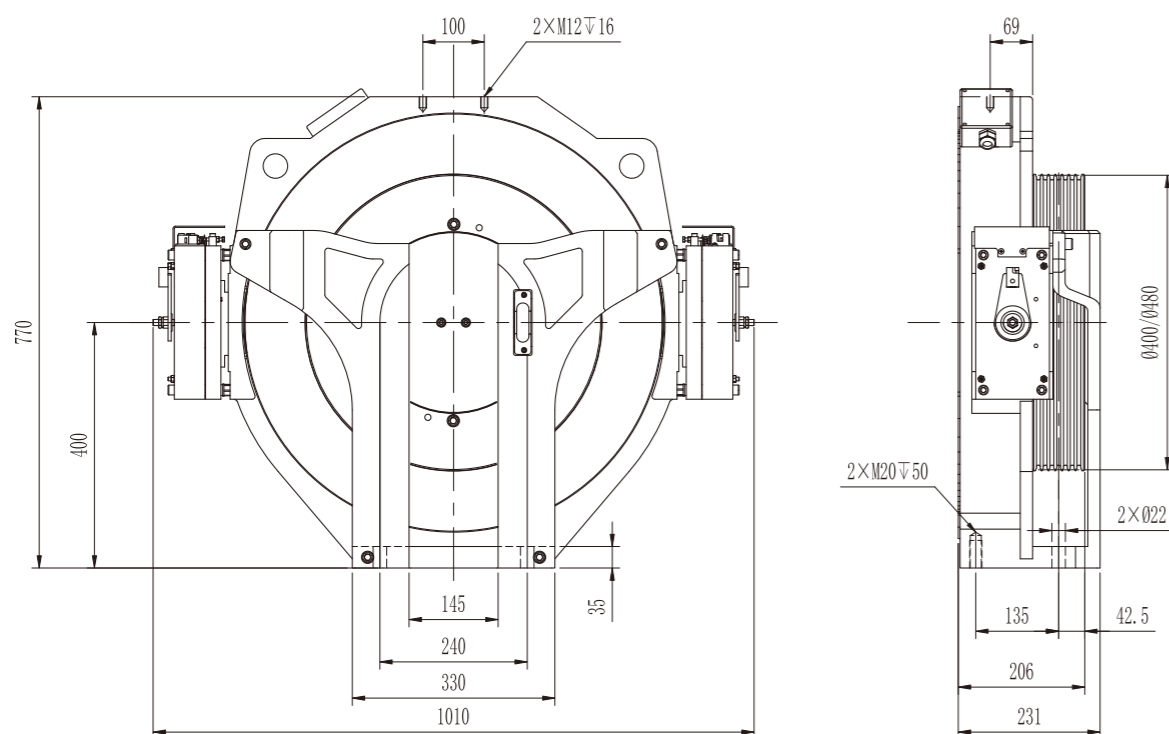
● Notes:

⚠ *1. The machine is only used for machine roomless.

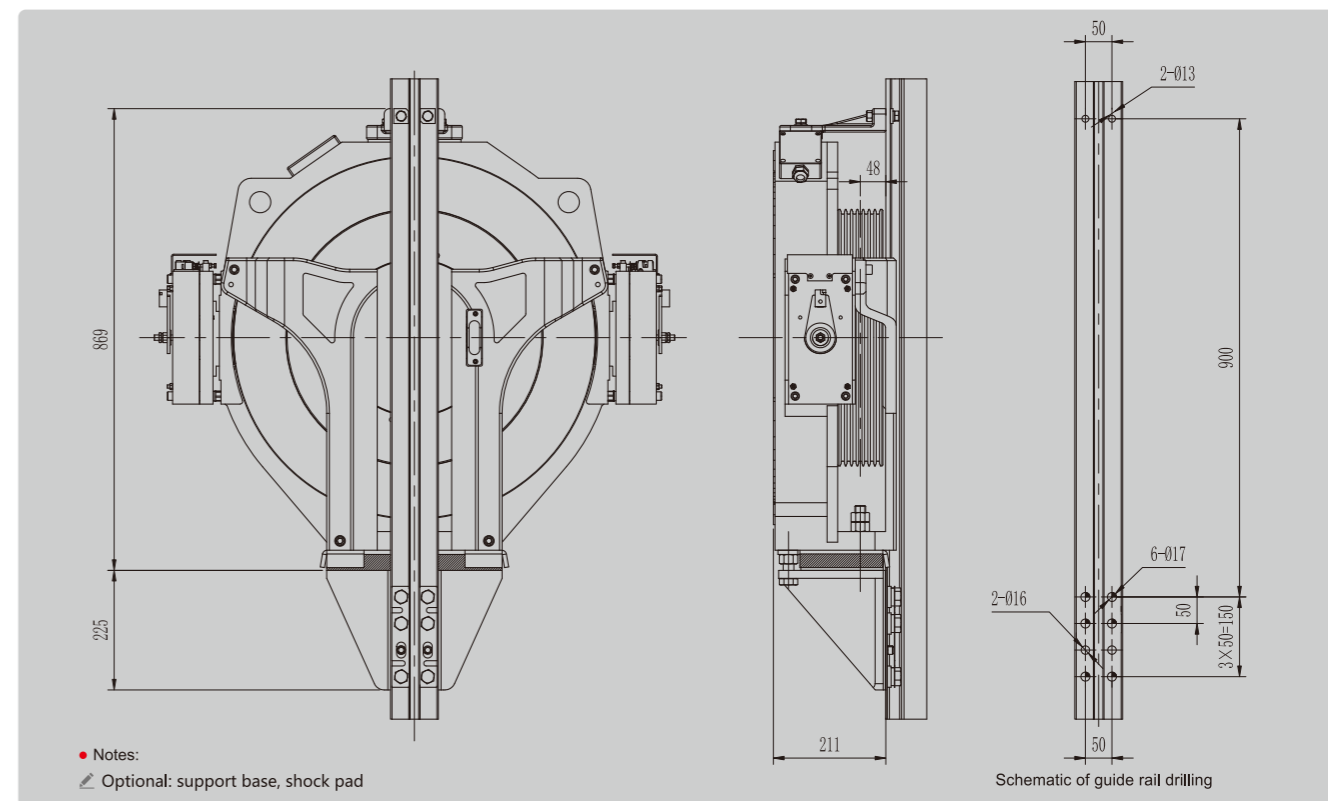
⚠ *2. Standard configuration:sin&cos encoder.

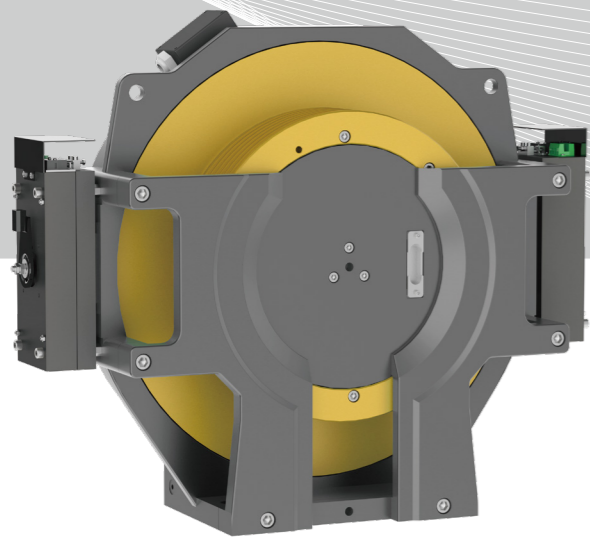
⚠ *3. The above is recommended value of cut angle,it's optional according to practical condition.

DIMENSIONS



DIMENSIONS





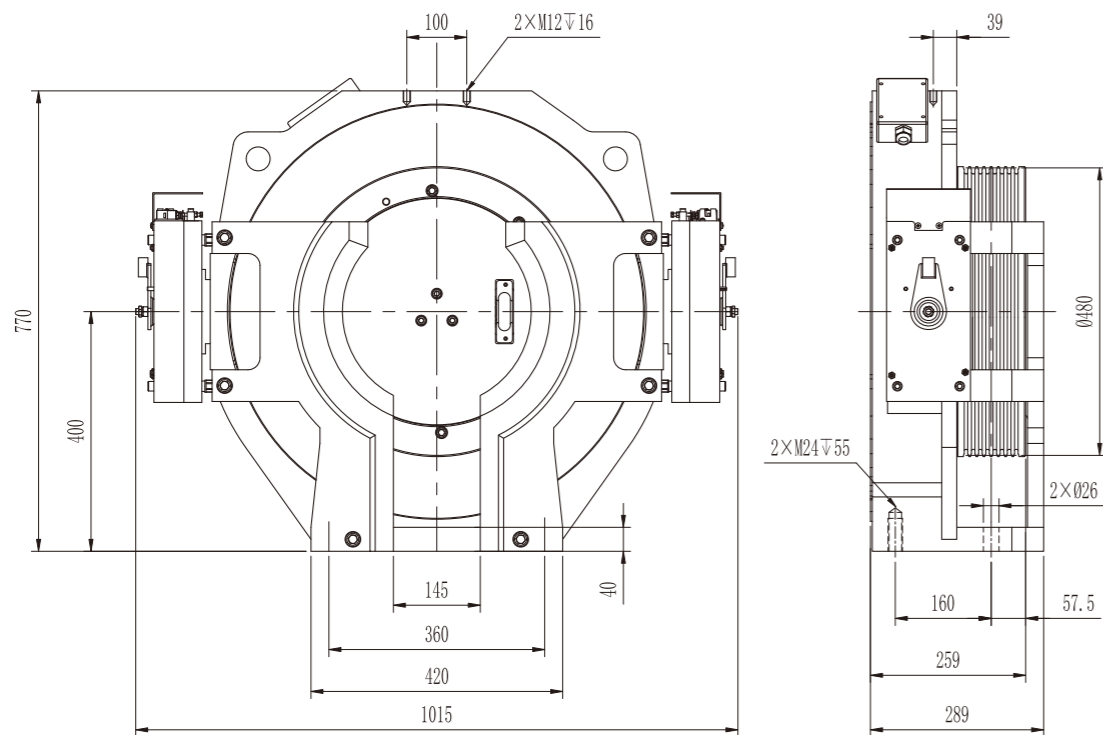
MCB300

PMS GEARLESS TRACTION MACHINE

• Voltage	380V	• Roping	2:1
• Load	(1350~1600)kg	• Elv. Speed	(1.0~1.75)m/s
• Sheave Diam.	Φ480mm	• Duty / Starts Per Hour	S5-40% / 240st/h
• Shell Protection Grade	IP41	• Ins. Grade	F
• Max. Axle Load	4500kg	• Weight	525kg

☉ Brake Type	EMK12K	Voltage / Current	DC110V / 2×1.6A (Standard)	DC207V / 2×1.3A (Optional)
--------------	--------	-------------------	----------------------------	----------------------------

DIMENSIONS

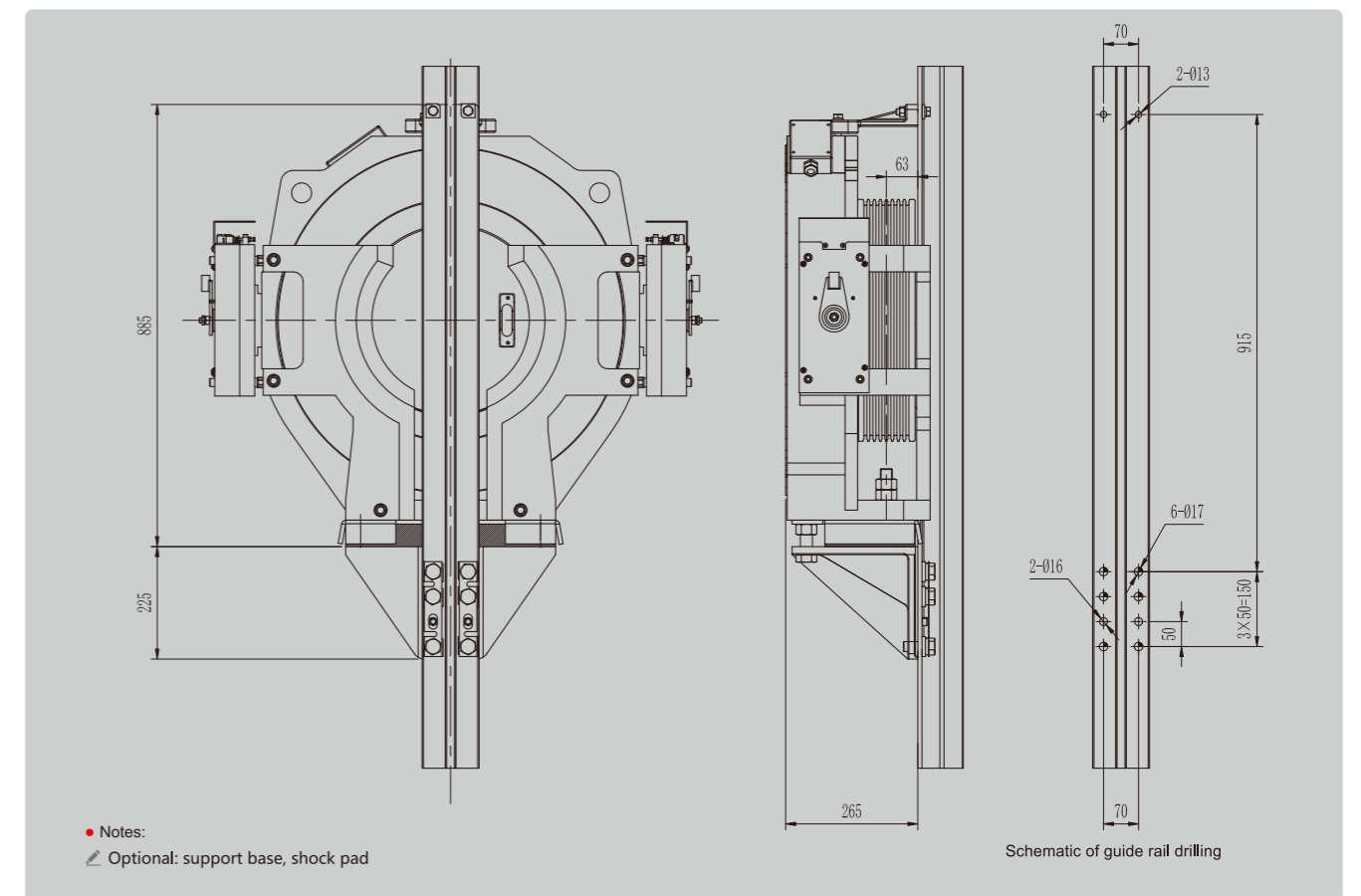


SPEC.SHEET

Type	MCB300										
Spec.	Load	Elv. Speed	Sheave Diam.	Sheave Groove	Current	Power	Speed	Freq.	Torque	Poles	β Angle
	kg	m/s	mm		A	kW	r/min	Hz	N·m		°
1350-1.0	1350	1.0	480	7×Φ8×12	21	8.6	80	26.7	1030	40	95
1350-1.5	1350	1.5		7×Φ8×12	30	12.8	119	39.7	1030	40	
1350-1.6	1350	1.6		7×Φ8×12	36	13.7	127	42.3	1030	40	
1350-1.75	1350	1.75		7×Φ8×12	36	15.0	139	46.3	1030	40	
1600-1.0	1600	1.0	480	8×Φ8×12	25	10.5	80	26.7	1250	40	
1600-1.5	1600	1.5		8×Φ8×12	35	15.6	119	39.7	1250	40	
1600-1.6	1600	1.6		8×Φ8×12	43	16.6	127	42.3	1250	40	
1600-1.75	1600	1.75		8×Φ8×12	43	18.2	139	46.3	1250	40	

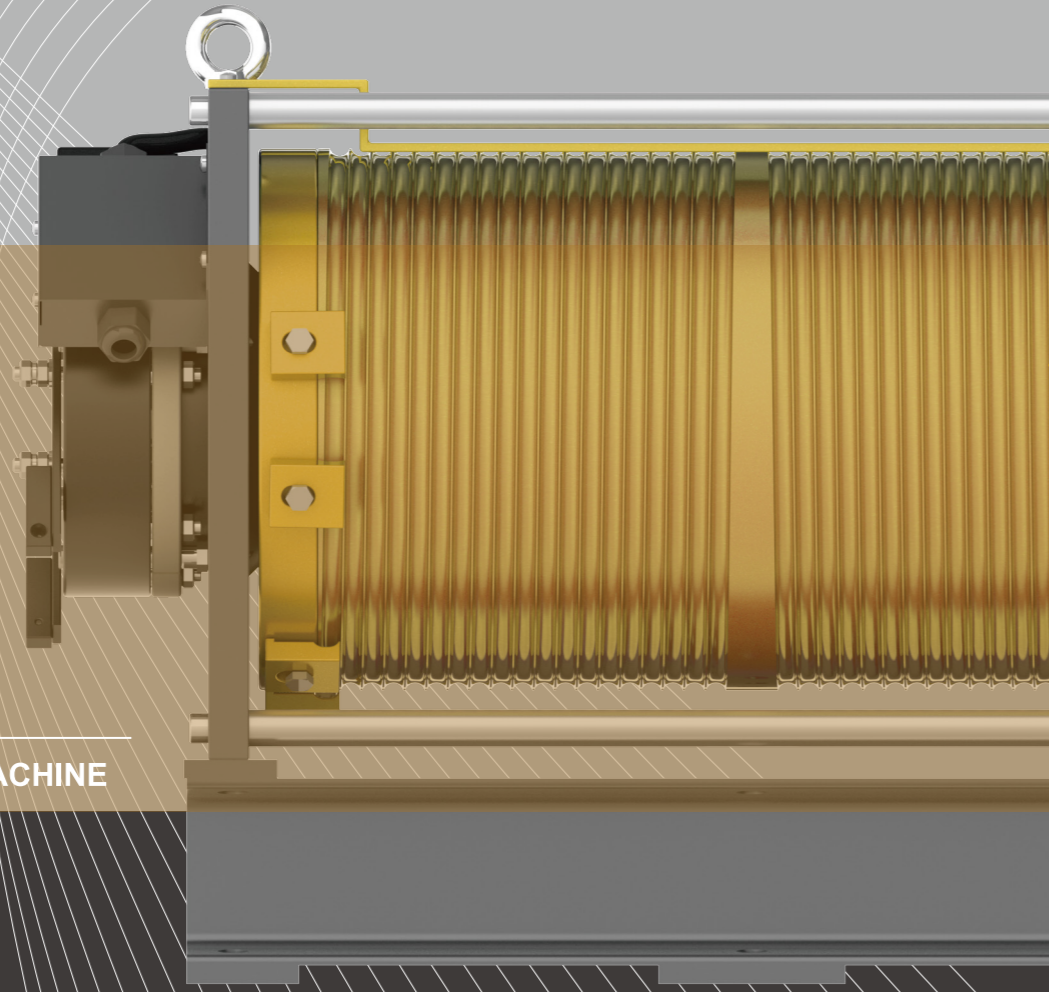
- Notes:
 ⚠ *1. The machine is only used for machine roomless.
 ⚠ *2. Standard configuration:sin&cos encoder.
 ⚠ *3. The above is recommended value of cut angle,it's optional according to practical condition.

DIMENSIONS



MONADRIVE®
MQ

PMS POSITIVE DRIVE MACHINE



MONADRIVE®

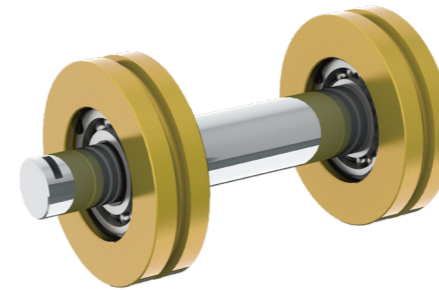
MQ SERIES INCLUDES

Load Q+P (600~1000) kg
Speed (0.3~0.4) m/s MQ270 ●

Load Q+P (600~700) kg
Speed 0.3m/s MQ230 ●

Load Q+P (800~1000) kg
Speed (0.3~0.4) m/s MQ290 ●

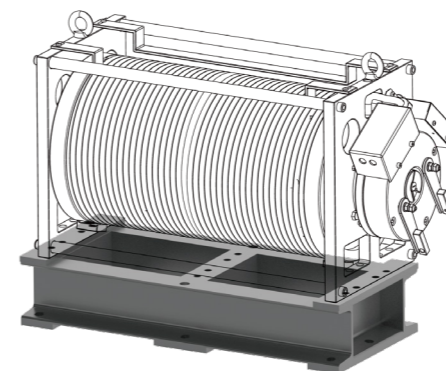
OPTIONAL ACCESSORIES



GUIDE WHEEL



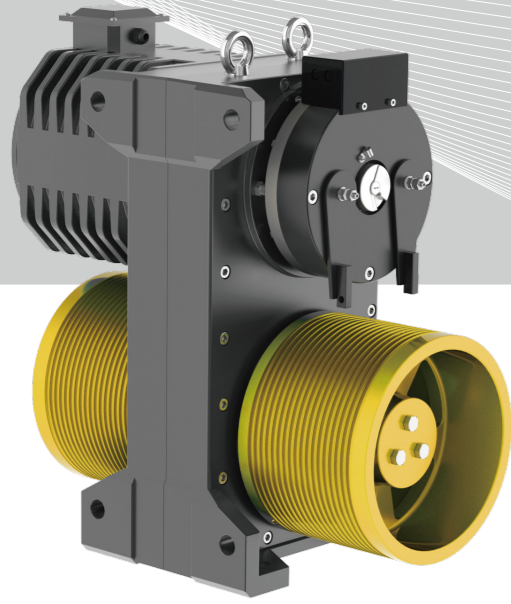
WIREROPE



INSTALLATION SEAT



ROPE HEAD ASSEMBLY



MQ270

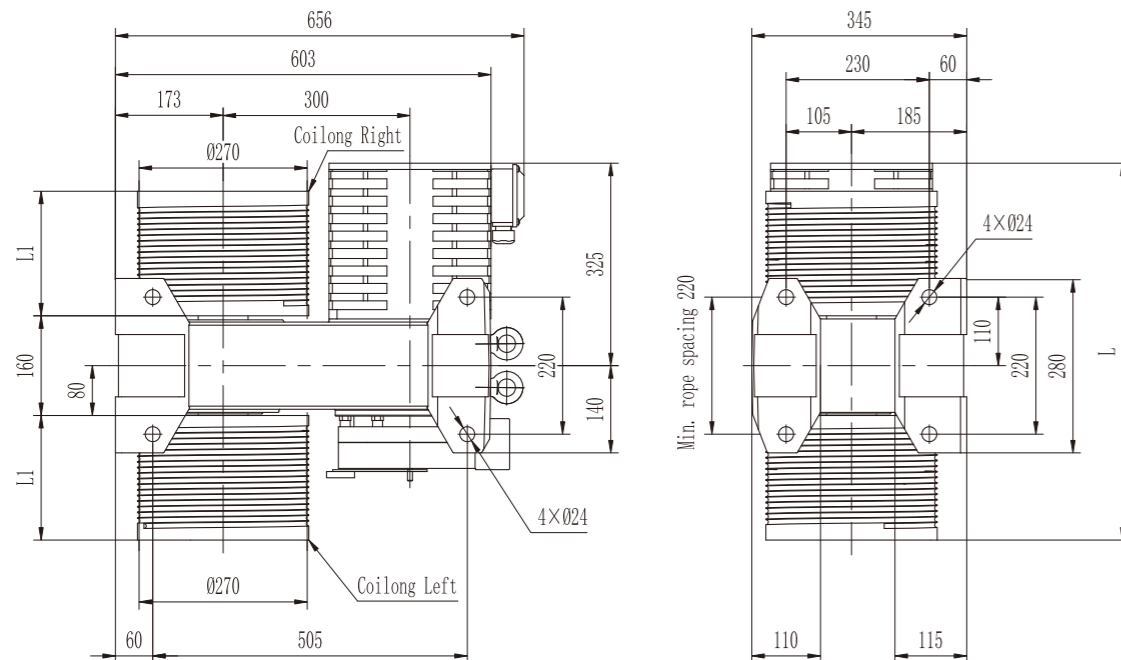
PMS POSITIVE DRIVE MACHINE

• Voltage	220V / 380V	• Roping	1:1
• Load(Q+P)	(630~1000)kg	• Elv. Speed	(0.3~0.4)m/s
• Sheave Diam.	Φ270mm	• Duty / Starts Per Hour	S5-25% / 180st/h
• Shell Protection Grade	IP41	• Ins. Grade	F
• Max. Axle Load	2500kg	• Weight	280kg

☉ Brake Type	EMM600	Voltage / Current	DC110V / 2×0.86A (Standard)	DC207V / 2×0.43A (Optional)
--------------	---------------	-------------------	-----------------------------	-----------------------------

• Notes : The machine can be equipped with single coil brake. (DC110V/2.0A & DC207V/1.2A)

DIMENSIONS



SPEC.SHEET

Type	MQ270								
Load(Q+P)	Elv. Speed	Sheave Diam.	Voltage	Current	Power	Speed	Freq.	Sheave Torque	Poles
kg	m/s	mm	V	A	kW	r/min	Hz	N-m	
600	0.3	270	220/380	7	1.8	170	22.7	800	16
600	0.4		220/380	10	2.4	226	30.1	800	16
700	0.3	270	220/380	8	2.1	170	22.7	960	16
700	0.4		220/380	11	2.8	226	30.1	960	16
800	0.3	270	220/380	9	2.4	170	22.7	1040	16
800	0.4		220/380	12	3.2	226	30.1	1040	16
900	0.3	270	220/380	11	2.7	170	22.7	1200	16
900	0.4		220/380	14	3.5	226	30.1	1200	16
1000	0.3	270	220/380	12	3.0	170	22.7	1360	16
1000	0.4		220/380	16	4.0	226	30.1	1360	16

• Notes:

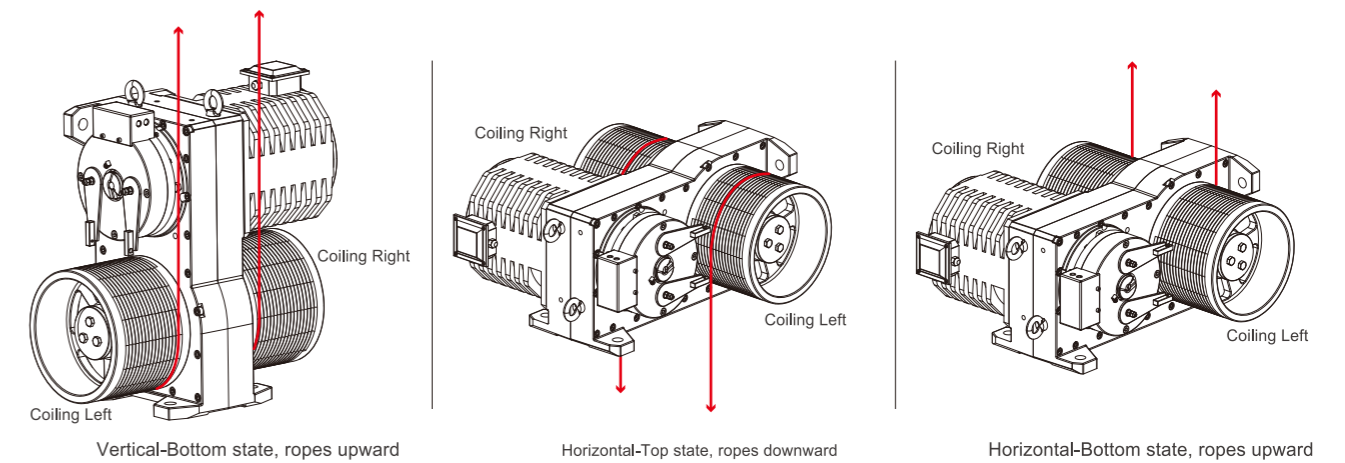
✎ *1. The machine is only used for machine roomless.

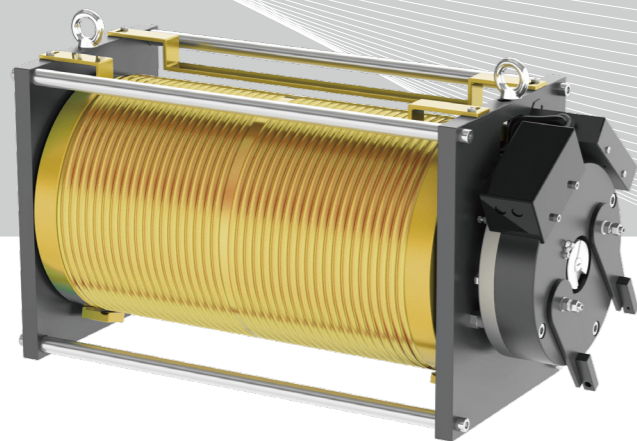
✎ *2. The machine is equipped with electrical brake release device.

RECOMMENDATION FORM

Rope diam. (mm)	Lifting height (m)	L(mm)	L1(mm)	Notes
Φ8	≤12	605	200	Standard
	12 < H ≤ 15	645	240	Optional
	15 < H ≤ 20	765	300	Optional
Φ10	≤9	605	200	Standard
	9 < H ≤ 12	645	240	Optional
	12 < H ≤ 16	765	300	Optional

DIMENSIONS





MQ230

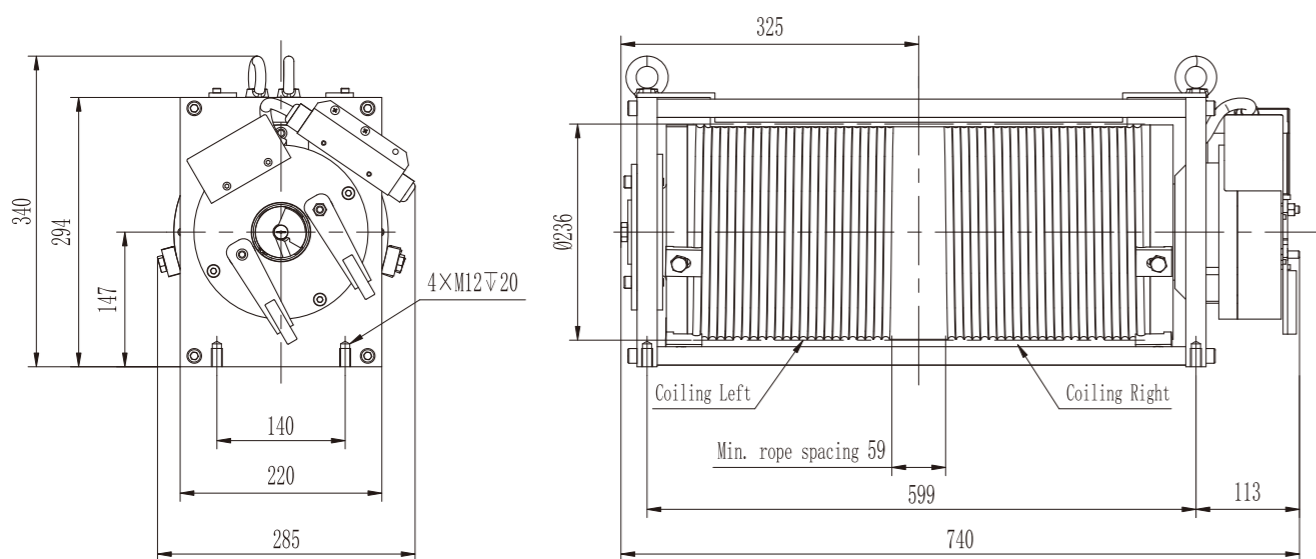
PMS POSITIVE DRIVE MACHINE

• Voltage	220V / 380V	• Roping	1:1
• Load(Q+P)	(600~700)kg	• Elv. Speed	0.3m/s
• Sheave Diam.	Φ236mm	• Duty / Starts Per Hour	S5-25% / 180st/h
• Shell Protection Grade	IP41	• Ins. Grade	F
• Max. Axle Load	2000kg	• Weight	200kg

☉ Brake Type	EMM600	Voltage / Current	DC110V / 1.5A (Standard)	DC207V / 0.93A (Optional)
--------------	---------------	-------------------	--------------------------	---------------------------

• Notes : The machine can only be equipped with single coil brake.

DIMENSIONS



SPEC.SHEET

Type	MQ230								
Load(Q+P)	Elv. Speed	Sheave Diam.	Voltage	Current	Power	Speed	Freq.	Sheave Torque	Poles
kg	m/s	mm	V	A	kW	r/min	Hz	N·m	
600	0.3	236	220/380	9	2.0	173	14.4	700	10
700	0.3	236	220/380	11	2.4	173	14.4	840	10

• Notes:

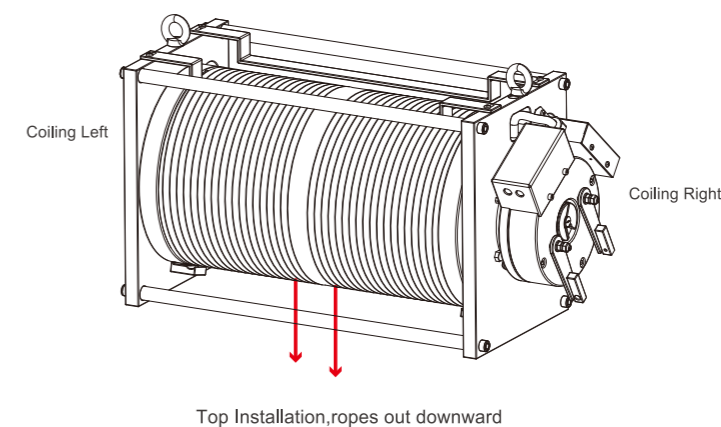
✎ *1. The machine is only used for machine roomless.

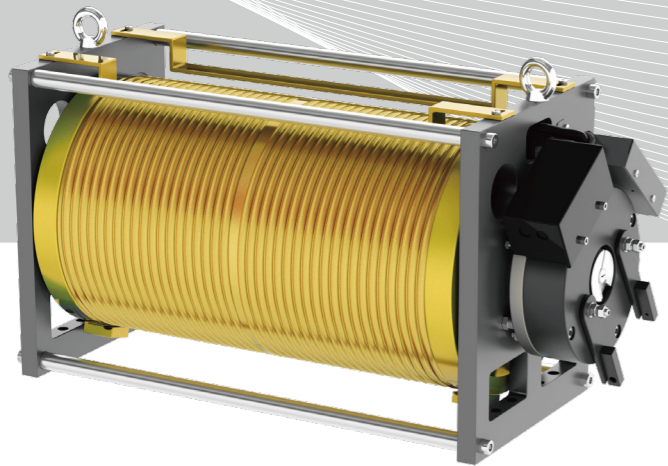
✎ *2. The machine can be equipped with mounting base optionally.

RECOMMENDATION FORM

Rope diam. (mm)	Turns×slot pitch (mm)	Lifting height (m)	Notes
Φ8	24×9	≤20	Standard

DIMENSIONS





MQ290

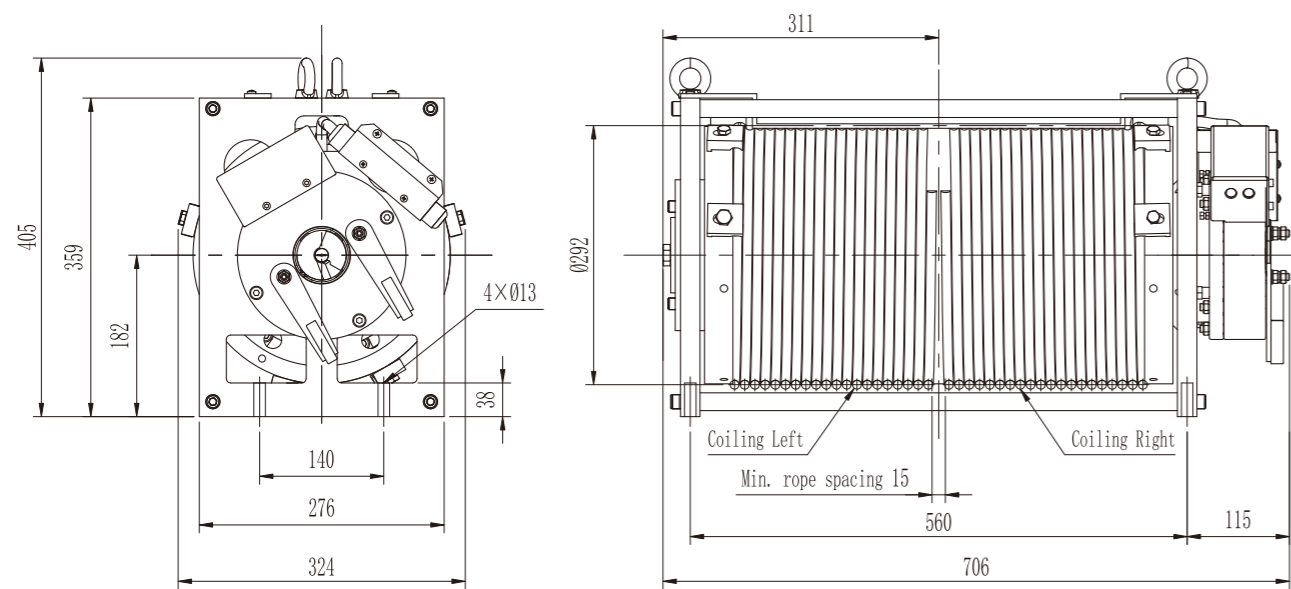
PMS POSITIVE DRIVE MACHINE

• Voltage	220V/ 380V	• Roping	1:1
• Load(Q+P)	(800~1000)kg	• Elv. Speed	(0.3~0.4)m/s
• Sheave Diam.	Φ292mm	• Duty / Starts Per Hour	S5-25% / 180st/h
• Shell Protection Grade	IP41	• Ins. Grade	F
• Max. Axle Load	2000kg	• Weight	215kg

☉ Brake Type	EMM600	Voltage / Current	DC110V / 2×0.86A (Standard)	DC207V / 2×0.43A (Optional)
--------------	---------------	-------------------	-----------------------------	-----------------------------

• Notes : The machine can be equipped with single coil brake. (DC110V/2.0A & DC207V/1.2A)

DIMENSIONS



SPEC.SHEET

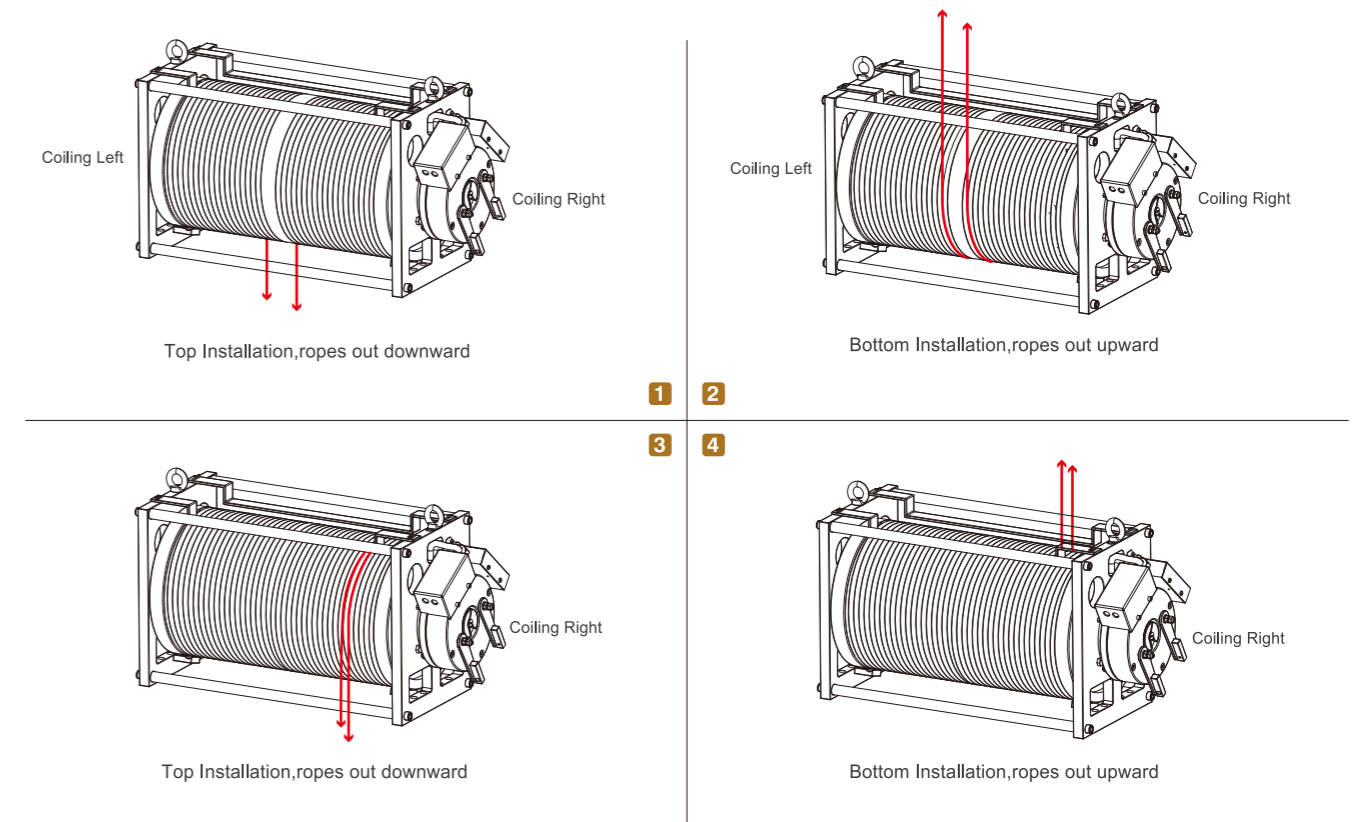
Type	MQ290								
Load(P+Q)	Elv. Speed	Sheave Diam.	Voltage	Current	Power	Speed	Freq.	Sheave Torque	Poles
kg	m/s	mm	V	A	kW	r/min	Hz	N-m	
800	0.3	292	220 / 380	15 / 8	2.4	196	26.1	1200	16
800	0.4		220 / 380	15 / 8	3.2	261	34.8	1200	16
900	0.3	292	220 / 380	16 / 9	2.7	196	26.1	1300	16
900	0.4		220 / 380	16 / 9	3.6	261	34.8	1300	16
1000	0.3	292	220 / 380	18 / 10	3.0	196	26.1	1500	16
1000	0.4		220 / 380	18 / 10	4.0	261	34.8	1500	16

• Notes:
 ✎ *1. The machine is only used for machine roomless.
 ✎ *2. The machine can be equipped with mounting base optionally.

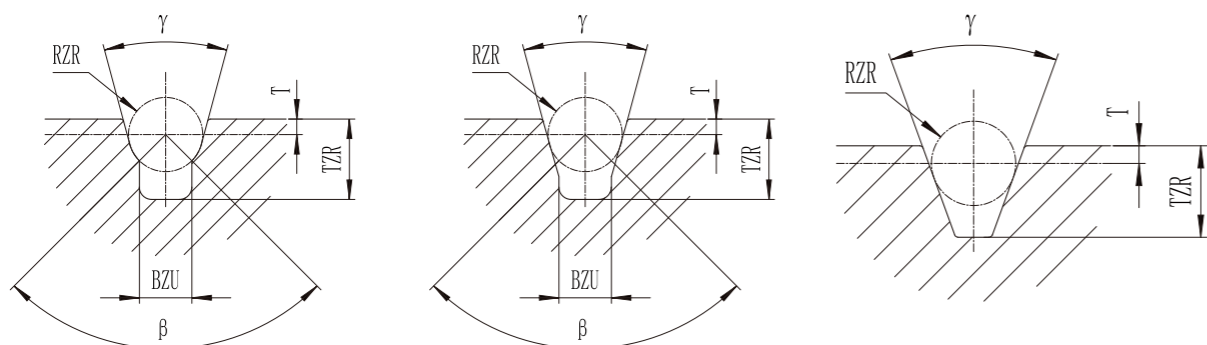
RECOMMENDATION FORM

Rope diam. (mm)	Turns×slot pitch (mm)	Lifting height (m)	Notes
Φ8	24×9	≤20	Standard
Φ10	19.5×11.5	≤15	Standard

DIMENSIONS



SHEAVE GROOVE



U-shape undercut groove

V-shape undercut groove

V-shape groove

- The groove shape can be customized.
- V-shape groove needs to be hardened.

BRAKE



EMK block brake for MCK/MCB



EMM disk brake for MONA/MGD/MQ



2024

Copyright © 2024 Monadrive
We will keep you posted on any data changes

MONADRIVE®